



# Drive and Motion Systems for **Feed Mixer Machines**

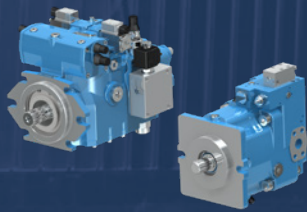


Dana Spicer® Drivetrain systems and  
Brevini® motion systems solutions for  
Feed Mixer Machines

# Full-System Solutions for Feed Mixer Machines

A cattle feed mixer can be self-propelled, trailed or stationary, and can be fitted with a Vertical or Horizontal mixer. Our current portfolio is able to support any of these configurations. Machines are designed to feed cattle on a daily basis, i.e. intensive use. The milling head gathers the fodder, pushing it into the conveyor through the desilage arm, to reach the vertical mixer, where the original fodder is mixed with a nutritional supplement for cattle. At the machine's end, a distribution system spreads the final mixed fodder evenly into the cattle storage unit.

Dana Motion System's range of cattle feed mixer drives are modular planetary gear units modified to meet the operating requirements of cattle feed mixers in agricultural industries. The mixer drives combine the traditional advantages of Dana planetary technology – compactness and high efficiency – with the characteristics of strength and reliability. The hydrostatic transmission of these machines can be made with our rigid or steering axles plus hydraulic motor or by wheel drives



## Brevini® Axial Piston Pumps

Displacement up to 226 cc  
Medium- and high-pressure options  
Fixed and variable displacement available  
Open or closed loop circuit  
ATEX certification



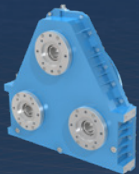
## Brevini® Axial Piston Motors

Fixed and variable displacement  
Displacement up to 216 cc/rev  
Seven or nine piston options technologies  
Wide range of control valves



## Brevini® Orbital Motors

Support 13 to 500 cc displacement  
Fixed and variable displacement  
Roller and gearmotor type available



## Brevini® Pump Drives

Input Power up to 480 kW  
Suitable for internal combustion engine or electric motor as input  
Output connection for 2, 3 or 4 hydraulic pumps  
Wide Range of ratios available to reduce or increase pump speed  
Modular concept  
Different pump pad available, to connect the majority of pump model  
Additional pump for lubrication or cooling system available on request.



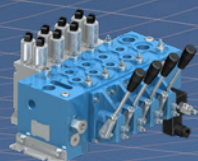
## Brevini® Slewing Drives

Robust output frame to sustain and drive the auger  
Wide range of ratios and the modular concepts available  
Maximum output torque up to 48 kNm  
Integer shaft flange  
Flange frame mounted  
Strong construction and high bearings capacity layout  
Two or three stages solution  
Electric IEC and NEMA motor adapters



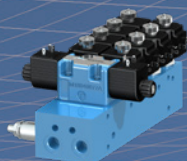
## Brevini® Gear Pumps

High efficiencies in compact construction  
High reliability  
Longer life in agricultural and mobile applications  
Low noise level



## Brevini® Proportional - Directional Valves

Fixed and variable displacement pump options  
Remote, electronic operation  
Smooth control to improve work function performance



## Brevini® Cetop Valves

Fixed and variable displacement options  
On/off or proportional directional flow  
Bankable cetop valves for harsh environments



## Brevini® Electronic Control Management

Complete solution for electric hydraulic control and human machine interface thought innovative ECUs, display and joystick.  
Enhanced programming flexibility to meet any customer requirement.

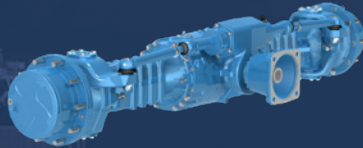
Spicer® drivetrain systems include a range of axle options, wheel and track drives, hydrodynamic transmissions, and electronic controls. In addition, Brevini® motion products for the Cattle Feed Mixer include gearboxes and hydraulic components such as motors, pumps, and valves. Dana's portfolio of advanced technologies has been engineered to support increased productivity and reliability, and lower emissions. It will improve

operator safety and comfort, and reduce total cost of ownership. Dana offers customized solutions to meet a range of customer needs in the most demanding environments, developed to match the robustness and duration required for typical agriculture applications



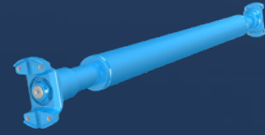
### Spicer® Wheel Drives

- Wide range of Spicer wheel drive for self-propelled feed mixers
- One effective solution provider: wheel drive equipped by hydraulic / electric motors
- Robustness, compactness and reliable solution to match the high performances required by agriculture machines
- Parking and dynamic braking system integrated
- Mechanical disconnect device for towing



### Spicer® Axles

- Multiple configurations available
- Bevel set and two different hub reduction sizes produce different ratios
- Suitable for hydrostatic or hydrodynamic drivelines
- Different design implemented to fulfill market demand

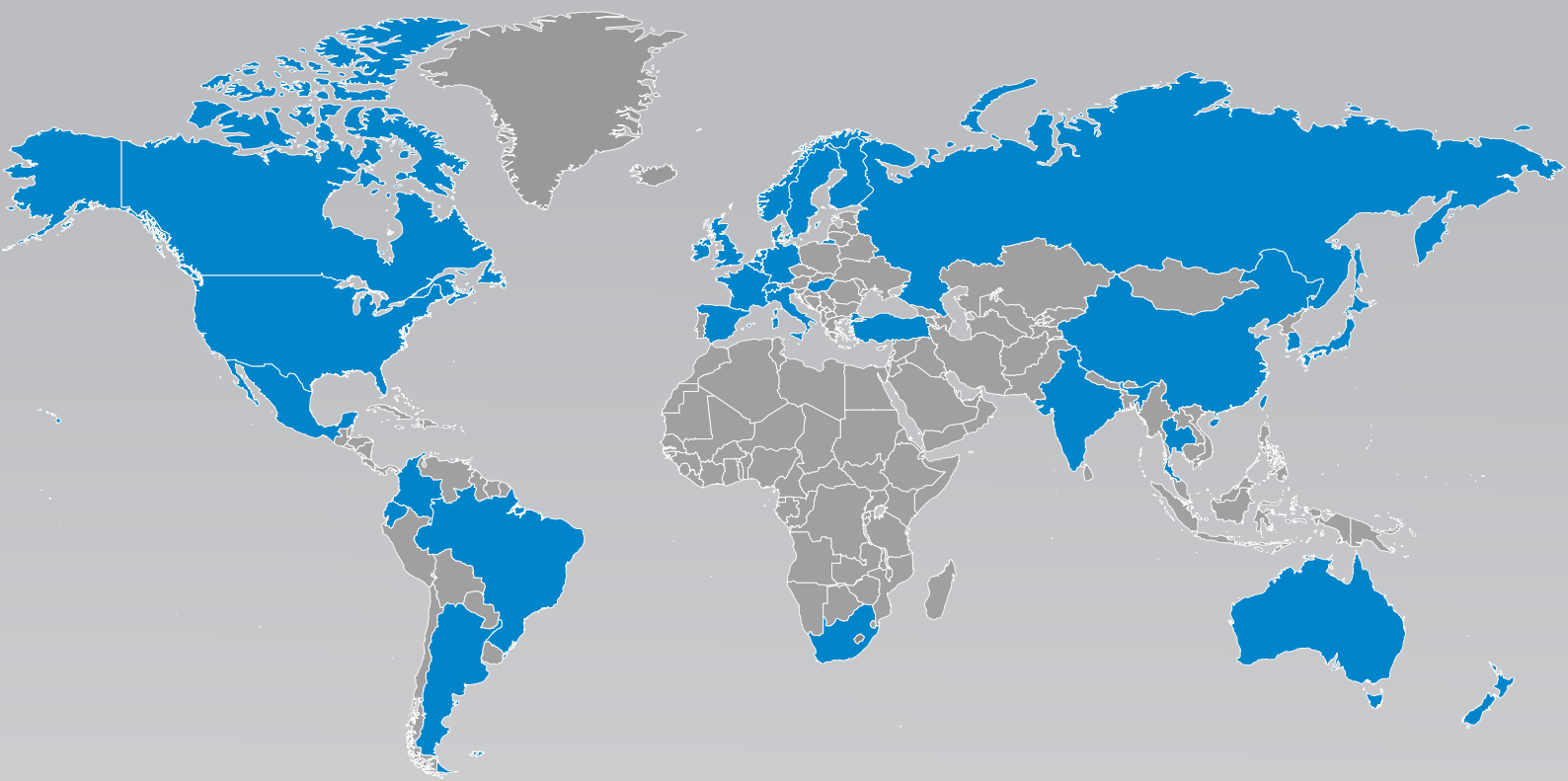


### Spicer® Driveshafts

- Optimized torque-carrying capability to meet vehicle demands
- Service-free option provides a maintenance-free product
- Completely interchangeable with relubeable products to reduce service parts
- Smaller packaging allows for greater flexibility among driveshaft configurations
- Industry leader providing broadest range of products to meet your requirements



Dana offers customized solutions to meet a range of customer needs, including modular designs and add-on accessories.



# Technologies Customized to **Every Part of the Globe**

With a global presence in 33 countries, Dana Incorporated boasts more than 100 engineering, manufacturing, and distribution facilities. Our worldwide network of local service centers provides assurance that each customer will benefit from the local proximity and responsiveness that they need.

## **About Dana Incorporated**

Dana is an integral partner for virtually every major vehicle and engine manufacturer worldwide. We are a leading supplier of drivetrain, sealing, and thermal technologies to the global automotive, commercial-vehicle, and off-highway markets. Founded in 1904, we employ thousands of people across six continents.



## **About Dana Off-Highway Drive and Motion Technologies**

Dana delivers fully optimized Spicer® drivetrain systems and individual product solutions to customers in construction, agriculture, material-handling, underground mining, and forestry markets, plus Brevini® motion systems for machine working functions.

Learn more about Dana's drivetrain and motion systems at [dana.com/offhighway](https://dana.com/offhighway)

## **Dana.com/oh/contact**

### **Application Policy**

Capacity ratings, features, and specifications vary depending upon the model and type of service. Application approvals must be obtained from Dana; contact your representative for application approval. We reserve the right to change or modify our product specifications, configurations, or dimensions at any time without notice.



**SPICER®**

**BREVINI®**