

AD3L... LEVER OPERATED CETOP 3/NG6



Max. pressure ports P/A/B	320 bar
Max. pressure port T	160 bar
Max. flow	60 l/min
Lever angle	2 x 17°
Fluid viscosity	10 ÷ 500 mm ² /s
Fluid temperature	-25°C ÷ 75°C
Ambient temperature	-25°C ÷ 60°C
Max. contamination level	class 10 in accordance with NAS 1638 with filter β ₂₅ ≥ 75
Weight	1,2 Kg
Weight M1 variant	1,8 Kg

AD3L...

STANDARD SPOOLS

CAP. I • 10

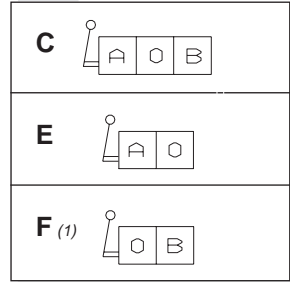
ORDERING CODE

- AD** Directional valve
- 3** CETOP 3/NG6
- L** Lever operation
- **** Spool type (see table 1)
Spool symbol see CAP. I • 10
- *** Mounting type (see table 2)
- *** Z = Valve with lever
X = Valve without lever
- *** Variants (see table 3)
- 4** Serial No.

TABLE 1 - SPOOLS TYPE

- Available spools:
01 / 02 / 03 / 04 / 05 / 06 / 06
13 / 15 / 16 / 17

TABLE 2 - MOUNTING TYPE



(1) For spools 15-16-17 the lever is mounted on site B

OVERALL DIMENSIONS

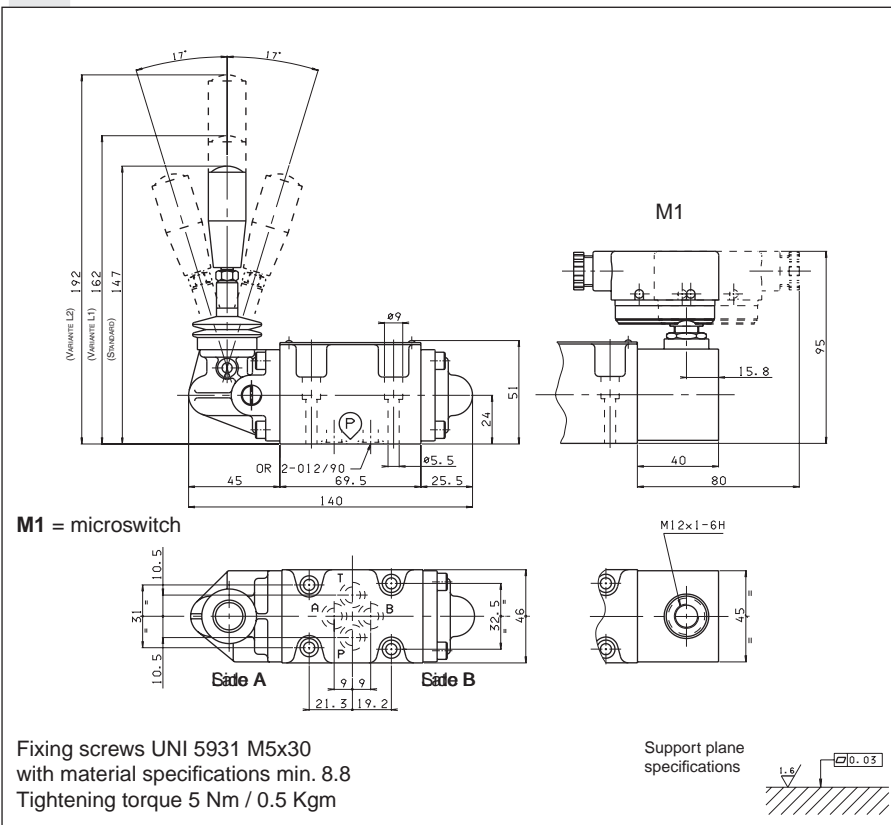
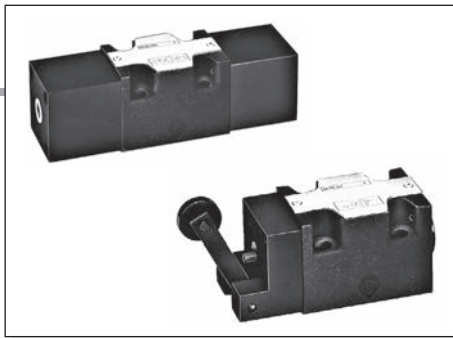


TABLE 3 - VARIANTS TABLE

VARIANTS	CODE (♦)
No variant	00
Viton	V1
Preset for microswitch Microswitch type MK code 1319098 can be ordered separately.	M1 (♦)
With detent (*) (mechanical connection) (Springs are different from those for standard versions)	D1 (♦)
Preset for microswitch + Detent (*)	MD (♦)
Lever length 162 mm	L1
Lever length 192 mm	L2
♦ Variant codes stamped on the plate	
(*) max. 150.000 cycles.	



ALTRI COMANDI

STANDARD SPOOLS	CAP. I • 10
AD3P...	CAP. I • 17
AD3O...	CAP. I • 17
AD3M...	CAP. I • 18
AD3D...	CAP. I • 18

DIRECTIONAL CONTROL VALVES

OTHER OPERATOR CETOP 3/NG6

INTRODUCTION

The directional control valves NG6 are designed for subplate mounting with an interface in accordance with UNI ISO 4401 - 03 - 02 - 0 - 94 standard (ex CETOP R 35 H 4.2-4-03), and can be used in all fields on account of their high flow rate and pressure capacities combined with compact overall dimensions.

The use of solenoids with wet armatures allows a very practical, safe construction completely dispensing with dynamic seals; the solenoid tube is screwed directly onto the valve chest whilst the coil is kept in position by means of a lock nut.

The special, precise construction of the ports and the improvement of the spools enables relatively high flow rates to be accommodated with a minimal pressure drop (Δp).

The centre position is obtained by means of calibrated length springs which reposition the spool in the centre or end of travel position once the action of the impulse is over.

The valves are designed for use with DIN 51524 standard hydraulic mineral oils and it is recommended that filters should be fitted to ensure a maximum contamination level of class 10 in accordance with NAS 1638, $\beta_{25} \geq 75$.

ORDERING CODE

AD	Directional valve
3	CETOP 3/NG06
*	Type of operator P = Pneumatic O = Oleodynamic M = Mechanically D = Direct mechanically (For other operator see past pages)
**	Spool (see CAP. I • 10)
*	Mounting type (tab.1)
Z	No voltage
**	Variants: 00 = no variant V1 = Viton H1 = Marine version (for AD3P only) DI(*) = Internal draining (for AD3O only)
2	Serial No.

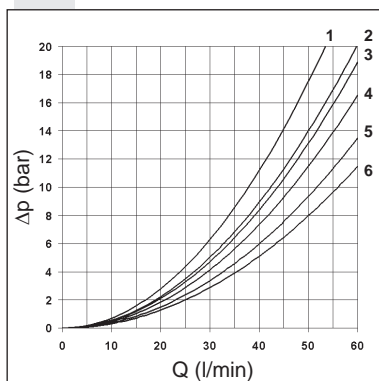
TAB.1 MOUNTING

STANDARD	
C	
D	
E	
F	
SPECIALS (WITH PRICE INCREASING)	
G	
H	
I	
L	
M	

• In case of **mounting D** with detent a maximum supply time of 2 sec is needed (only for AC coils).

(*)The DI variant is recommended in the environments characterised by the presence of dust or any type of contamination.

PRESSURE DROPS



Spool type	Connections				
	P→A	P→B	A→T	B→T	P→T
01	5	5	5	5	
02	6	6	6	6	5
03	5	5	6	6	
04	1	1	2	2	4
05	5	5	5	5	
06	5	5	6	5	
66	5	5	5	6	
07		4	6		
08	6	6			
09		5		5	
10	5	5	5	5	

Curve No.

Spool type	Connections				
	P→A	P→B	A→T	B→T	P→T
11	4			6	
22		4	6		
12		5	6	6	
13		5	6	6	
14	2	1	1	1	2
28	1	2	1	1	2
15 - 19	4	4	6	6	
16	5	5	4	4	
17 - 21	1	3			
18	5	5			
20	4	4	4	4	

Curve No.

The diagram at the side shows the pressure drop curves for spools during normal usage. The fluid used is a mineral oil with a viscosity of 46 mm²/s at 40°C; the tests have been carried out at a fluid temperature of 40°C. For higher flow rates than those in the diagram, the losses will be those expressed by the following formula:

$$\Delta p_1 = \Delta p \times (Q_1/Q)^2$$

where Δp will be the value for the losses for a specific flow rate Q which can be obtained from the diagram, Δp_1 will be the value of the losses for the flow rate Q_1 that is used.