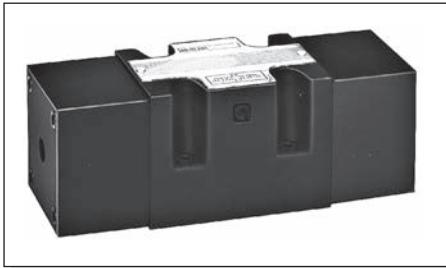


AD50... OLEO-PNEUMATIC OPERATION TYPE VALVES CETOP 5

1



Max. pressure ports P/A/B	320 bar
Max. pressure port T	160 bar
Max. flow	100 l/min
Min. operating pressure	4 + [0.027 x (pt*)] bar - see note
Max. operating pressure	200 bar
Fluid viscosity	10 ÷ 500 mm ² /s
Fluid temperature	-25°C ÷ 75°C
Ambient temperature	-25°C ÷ 60°C
Max. contamination level	class 10 in accordance with NAS 1638 with filter $\beta_{25} \geq 75$
Weight (single pilot)	4,1 Kg
Weight (twin pilot)	5,4 Kg

- Possible mounting:
Hydraulic control:
C/D/E/F/G/H/I/L/M
Pneumatic control:
I/L/M

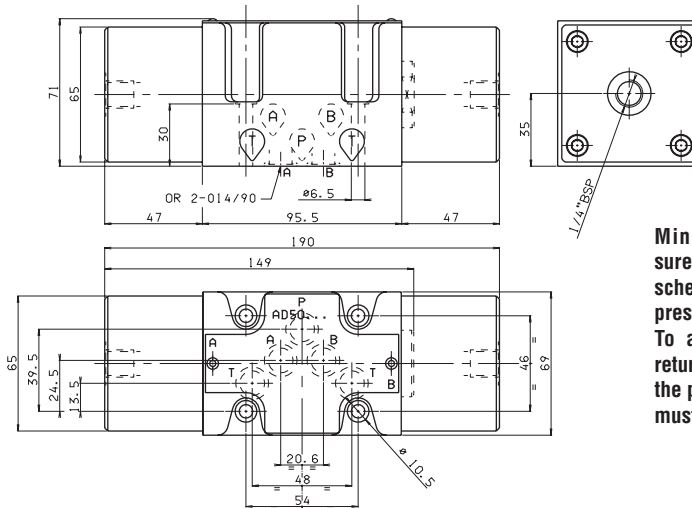
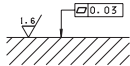
• Ordering code see Cap. I • 34

(pt*) = Pressure at port T

OVERALL DIMENSIONS

Fixing screws UNI 5931 M6x40 with material specifications min. 8.8
Tightening torque 8 Nm / 0.8 Kg

Support plane specifications



Minimum pilot pressure depends on spool scheme, flow rate and pressure.
To allow the spool to return to neutral position, the pilot pressure must be below 2 bar.

EAD50 - 02/2000/e

AD5D... DIRECT MECHANICALLY OPERATED TYPE VALVES CETOP 5



Max. pressure ports P/A/B	320 bar
Max. pressure port T	20 bar
Max. flow	100 l/min
Operating force - see note (*)	8 Kg - see note (**)
Fluid viscosity	10 ÷ 500 mm ² /s
Fluid temperature	-25°C ÷ 75°C
Ambient temperature	-25°C ÷ 60°C
Max. contamination level	class 10 in accordance with NAS 1638 with filter $\beta_{25} \geq 75$
Weight	3,8 Kg

- Possible mounting:
E/F/G/H
- Ordering code see Cap. I • 34

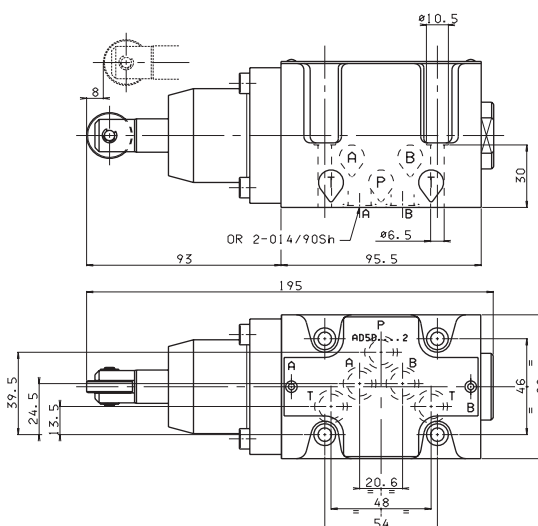
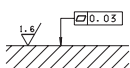
• Notes:
(*) In the absence of counter-pressure at port T

(**) 10 Kg with a pressure of 20 bar at T

OVERALL DIMENSIONS

Fixing screws UNI 5931 M6x40 with material specifications min. 8.8
Tightening torque 8 Nm / 0.8 Kg

Support plane specifications



Stroke	8 mm
Extra stroke	2 mm
Working stroke	4 mm

EAD5D - 03/2000/e