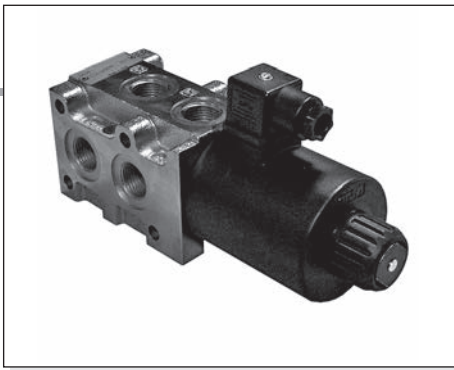


# CDL106... STACKABLE CIRCUIT SELECTOR VALVES

1



The stackable circuit selector valves, type CDL.10.6, allows one single drive of 6 users with 5 elements connected in series.

As they are moved from high performances solenoids they don't need the external drainage.

This valves can manage high hydraulic powers with a minimal pressure drop.

Max. pressure	250 bar
Max. flow	80 l/min
Overlap	negative
Hydraulic fluids	Mineral oils DIN 51524
Fluid viscosity	10 ÷ 500 mm <sup>2</sup> /s
Fluid temperature	-25°C ÷ 75°C
Ambient temperature	-25°C ÷ 60°C
Max. contamination level	class 10 in accordance NAS with 1638 with filter $\beta_{25}^{375}$
Weight	see "Overall dimension"

<b>CDL106...</b>	
"A16" DC Coils	CAP. I • 74
CONNECTORS STANDARD	CAP. I • 20

### ORDERING CODE

<b>CDL</b>	Stackable circuit selector valve
<b>10</b>	Size NG10
<b>6</b>	No. of way (single element)
<b>*</b>	W = Threaded connectors 1/2" BSP U = Threaded connectors SAE 107/8"-14 UNF
<b>I</b>	Internal drainage
<b>*</b>	No. of elements: 1 / 2 / 3 / 4 / 5
<b>*</b>	Voltage (Tab. 1)
<b>**</b>	Variants (Tab. 2)
<b>1</b>	Serial No.

### TAB.1 - A16 COIL

DC VOLTAGE **	
L	12V
M	24V
N	48V*
P	110V*
Z	102V*
X	205V*
W	Without DC coil

115Vac/50Hz  
120Vac/60Hz  
with rectifier

230Vac/50Hz  
240Vac/60Hz  
with rectifier

Voltage codes are not stamped on the plate, they are readable on the coils.

\* Special voltage  
\*\* Technical data see CAP. I • 74

### TAB.2 - VARIANTS

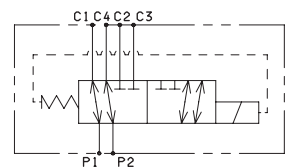
No variant (without connectors)	S1(*)
Viton	SV(*)
Emergency button	ES(*)
Rotary emergency button	P2(*)

Other variants available on request.

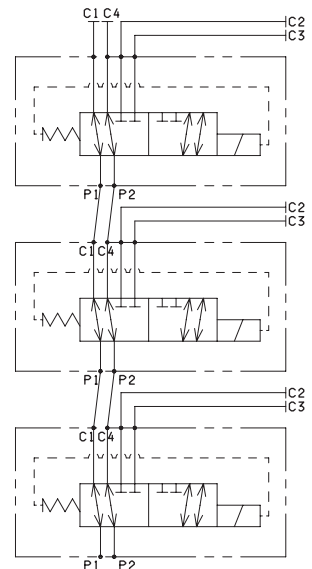
(\*) Coils with Hirschmann connection supplied without connectors. The connectors can be ordered separately, CAP. I • 20.

### HYDRAULIC SYMBOLS

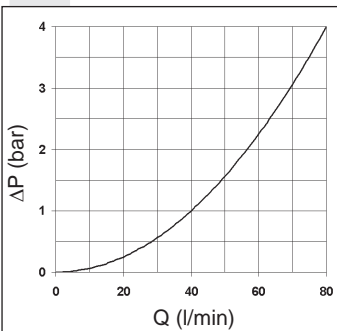
#### SINGLE ELEMENT



#### MULTISTATION CONNECTION



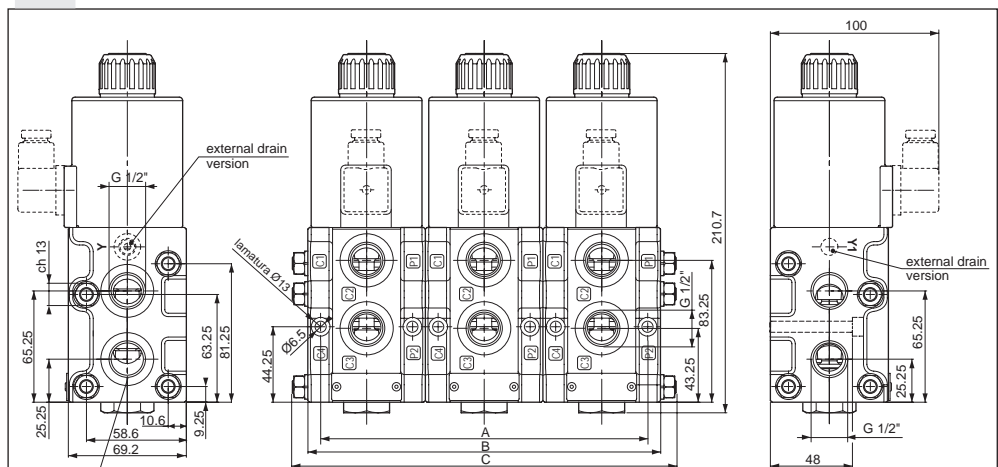
### PRESSURE DROPS



The fluid used is a mineral oil with a viscosity of 46 mm<sup>2</sup>/s at 40°C; the tests have been carried out at a fluid temperature of 40°C.

Fixing screws UNI 5931 M6x60 with material specifications min. 8.8  
Tightening torque for studs 8 Nm / 0.8 Kg  
Tightening torque for rods 20 Nm / 2 Kg

### OVERALL DIMENSIONS



N. 2 O-ring  
1/2" BSP: 2-024  
SAE107/8"-14 UNF: 2-025

No. of elements	No. of way	Length (mm)			Weight (Kg)	Kit spare part code* (rods and studs)
		A	B	C		
1	06	54	69	-	4,5	/
2	08	123	138	160	9,3	V89.56.0001
3	10	192	207	226	14	V89.56.0002
4	12	261	276	296	18,5	V89.56.0003
5	14	330	345	365	23,3	V89.56.0004

(\*) For multiple composition rods and studs are available.