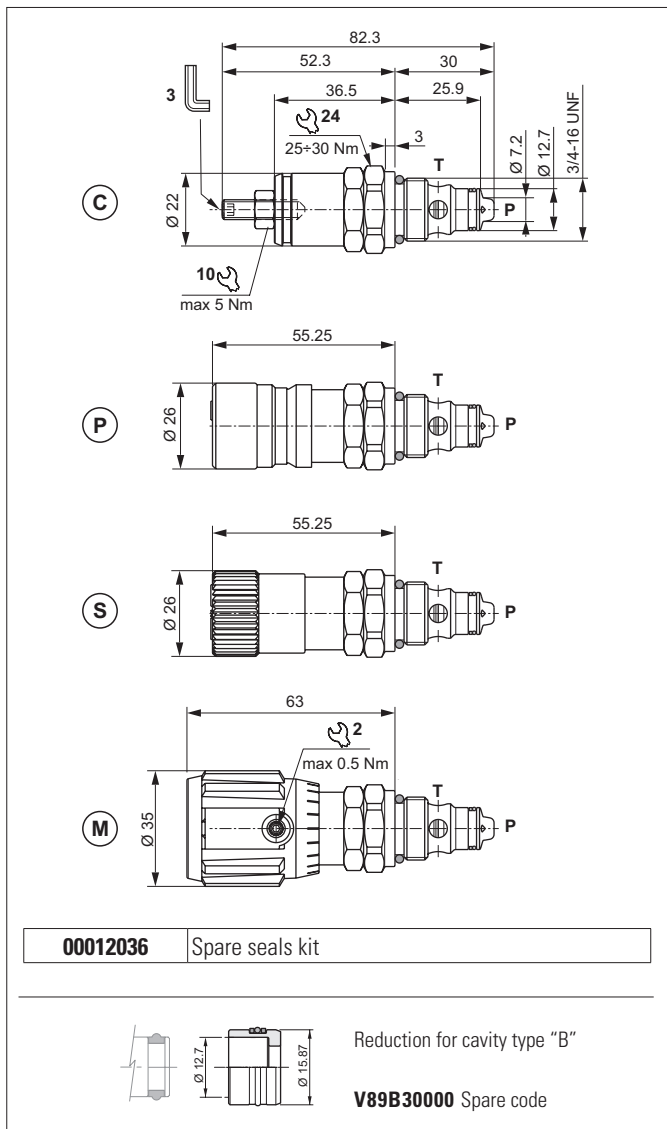


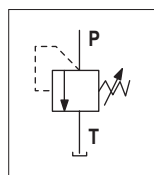
## DIRECT ACTING PRESSURE RELIEF VALVES

1



Valve housings see section 14.

### HYDRAULIC SYMBOL



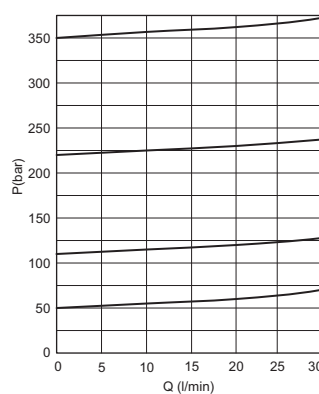
The direct acting relief valve limits the pressure in a hydraulic circuit. It raises the safety level by making it impossible for the plant operators to set a higher pressure rating, than that specified in the catalogue. It has a pack spring with a mechanical stop. It has a galvanised steel body. The guided ball poppet is in tempered and ground steel.

### HYDRAULIC FEATURES

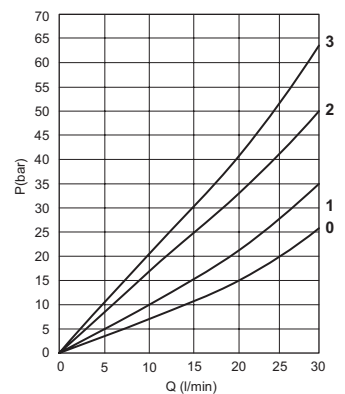
Max. working pressure	350 bar
Setting range:	
Spring 0 (white)	max 50 bar
Spring 1 (green)	max 110 bar
Spring 2 (yellow)	max 220 bar
Spring 3 (red)	max 350 bar
Max. Flow	30 l/min
Hydraulic fluid	DIN 51524 Mineral oils
Fluid viscosity	10 ÷ 500 mm <sup>2</sup> /s
Fluid temperature	-25°C ÷ 75°C
Ambient temperature	-25°C ÷ 60°C
Max. contamin. level class with filter	ISO 4406:1999 - class 19/17/14
Weight	0.15 kg
Tightening torque	25 ÷ 30 Nm
Cavity (3/4 - 16 UNF)	CD018006 (See section 17)

The minimum permissible setting pressure depending on the spring: see curves below

### PRESSURE-FLOW RATE



### MIN. SETTING PRESSURE



0 = CMP04\*0 - 1 = CMP04\*1.. - 2 = CMP04\*2.. - 3 = CMP04\*3..  
 Fluid used: mineral based oil with viscosity 46 mm<sup>2</sup>/s at 40°C.

### ORDERING CODE

