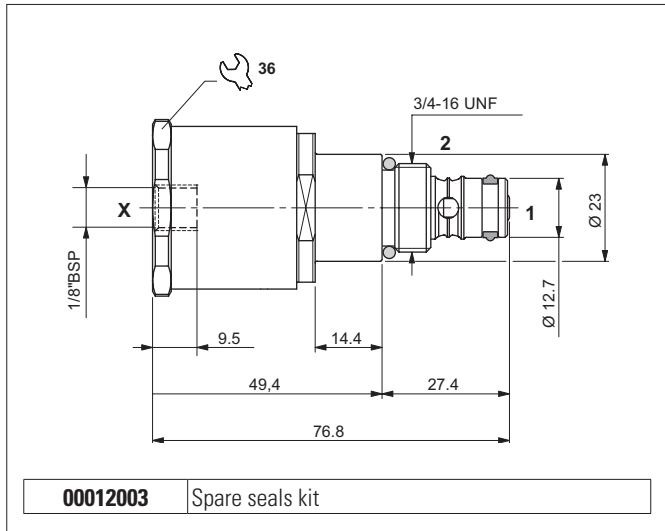


PNEUMATIC OPERATED VALVES



The direct acting, bi-directional way normally closed 2-way 2 position valve with pneumatic control releases the pressure enabling fluid to flow through the valve in both directions.

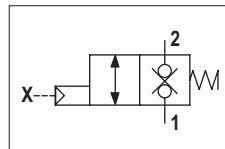
The bi-directional tapered poppet is in tempered and ground steel, released when the pilot branch X is connected to a pneumatic pressure signal. The valve body is in galvanised steel.

HYDRAULIC FEATURES

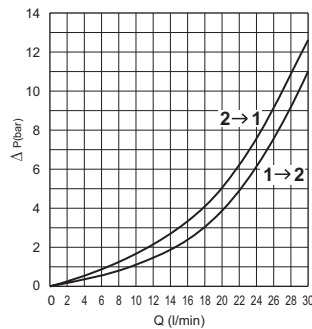
Max. working pressure	250 bar
Min. piloting pressure 1 → 2	5.5 bar
Min. piloting pressure 2 → 1	3.5 bar
Max. piloting pressure	20 bar
Max. Flow	30 l/min
Max. Leakage (0 ÷ 20 drops/min)	0 ÷ 1 cm ³ /min
Hydraulic fluid	DIN 51524 Mineral oils
Fluid viscosity	10 ÷ 500 mm ² /s
Fluid temperature	-25°C ÷ 75°C
Ambient temperature	-25°C ÷ 60°C
Max. contamin. level class with filter	ISO 4406:1999 - class 19/17/14
Weight	0.107 kg
Tightening torque	25 ÷ 30 Nm
Cavity (3/4 - 16 UNF)	CD018006 (See section 17)

Valve housings see section 14.

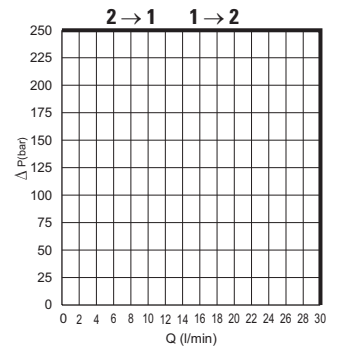
HYDRAULIC SYMBOL



PRESSURE DROPS



LIMITS OF USE



Fluid used: mineral based oil with viscosity 46 mm²/s at 40°C.

ORDERING CODE

