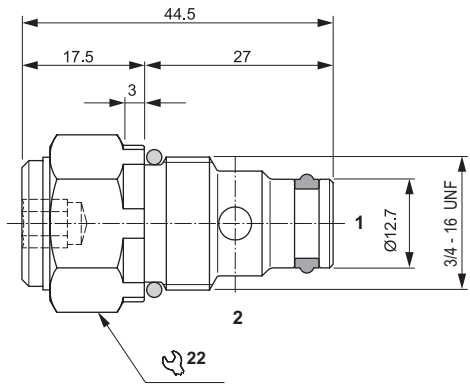


ONE-WAY CHECK VALVES

4



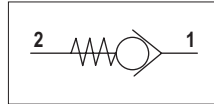
00012003 Spare seals kit

The check-valves permit one-directional oil flow only. On the opposite side the sealing is guaranteed by a hardened and ground taper steel poppet. The spring permits an easy valve installation in any position. External steel body protected on surface by zinc plating.

HYDRAULIC FEATURES

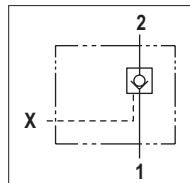
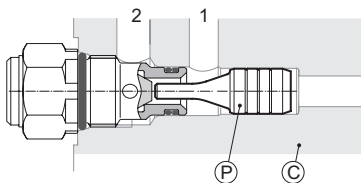
Max. working pressure	350 bar
Max. Flow	40 l/min
Max. Leakage (0 ÷ 5 drops/min)	0 ÷ 0.25 cm ³ /min
Hydraulic fluid	DIN 51524 Mineral oils
Fluid viscosity	10 ÷ 500 mm ² /s
Fluid temperature	-25°C ÷ 75°C
Ambient temperature	-25°C ÷ 60°C
Max. contamin. level class with filter	ISO 4406:1999 - class 19/17/14
Weight	0.08 kg
Tightening torque	25 ÷ 30 Nm
Cavity (3/4 - 16 UNF)	CD018006 (See section 17)

HYDRAULIC SYMBOL

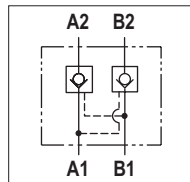
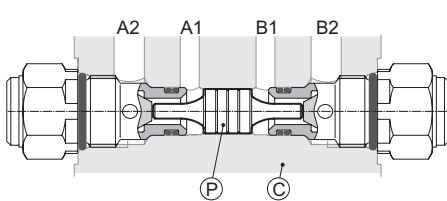


PILOT SPOOL

Single

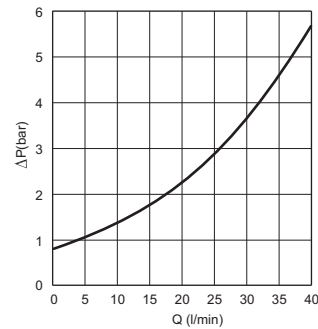


Double



Valve housings see section 14.

PRESSURE DROPS



Fluid used: mineral based oil with viscosity 46 mm²/s at 40°C.

Type	Spool (P) code	Cavity (C) (See section 17)	Pilot ratio
Single	F63400002	CD018015	1 : 2.9
Double	F63400003	CD018016	1 : 2.9

ORDERING CODE



CRU = Check valve

Series

2 = Serial No.

04 = 3/4 - 16 UNF

Size

01 = 0.3 bar
00 = 0.7 bar (standard)
04 = 4.5 bar
07 = 7.5 bar
10 = 10 bar

Opening pressure

Variants

00 = No variants