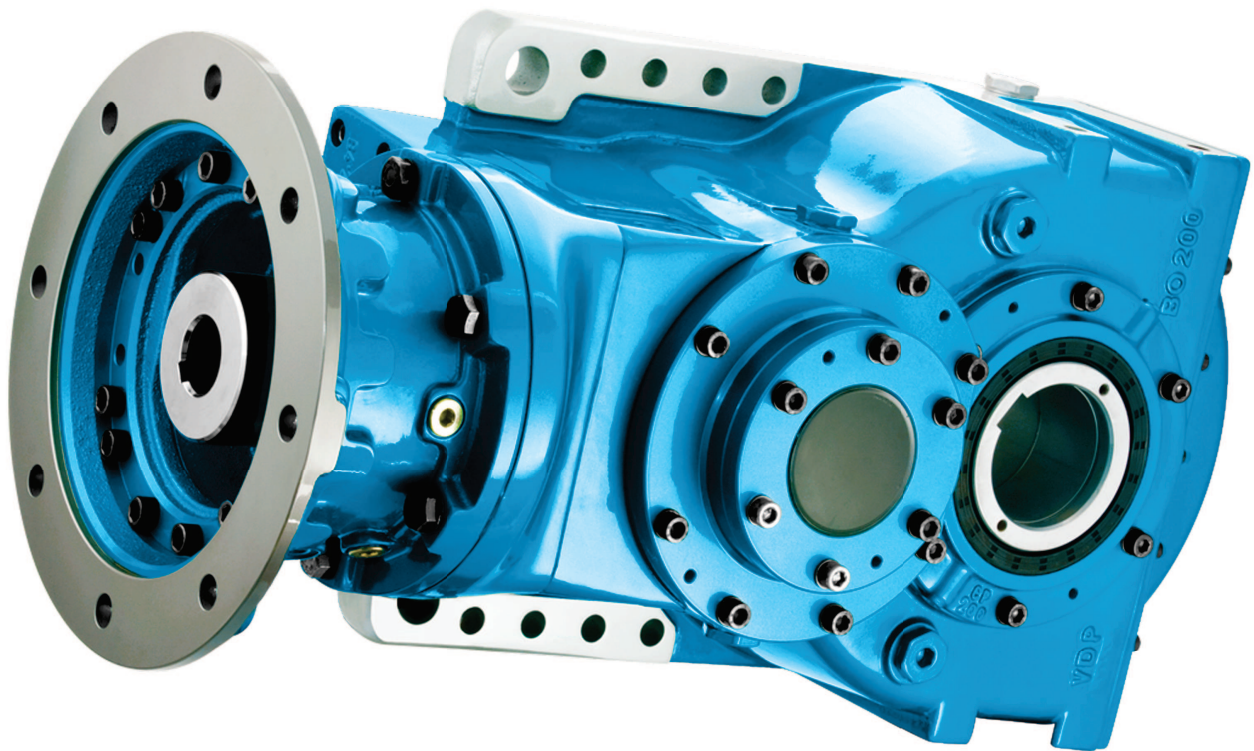




BREVINI[®]

Motion Systems

Posiplan Drives



Size 18

Planetary helical gearboxes / Planeten-Stirradgetriebe / Réducteurs à arbres cylindriques / Reductores con ejes paralelos / Redutores de eixos paralelos

	$n_1 = 3000 \text{ min}^{-1}$			$n_1 = 1500 \text{ min}^{-1}$			$n_1 = 1000 \text{ min}^{-1}$			T_{2150} [Nm]	P_T [kW]	
	i_{eff}	n_2 [min^{-1}]	P_{N1} [kW]	T_{N2} [Nm]	n_2 [min^{-1}]	P_{N1} [kW]	T_{N2} [Nm]	n_2 [min^{-1}]	P_{N1} [kW]			T_{N1} [Nm]
PH218 - E	10,75	279	92,33	3 095	140	58,16	3 900	93,1	44,39	4 465	8 870	37 (*)
	12,42	241	83,81	3 250	121	52,80	4 095	80,5	52,80	6 140	8 870	
	13,42	224	81,71	3 420	112	51,48	4 310	74,5	39,28	4 935	8 985	
	15,52	193	74,18	3 590	96,7	46,73	4 525	64,4	35,66	5 180	8 985	
	18,87	159	65,10	3 835	79,5	41,01	4 830	53,0	31,30	5 530	8 985	
	22,42	134	58,04	4 060	66,9	36,56	5 115	44,6	27,90	5 855	8 985	
	26,46	113	53,27	4 400	56,7	33,56	5 540	37,8	25,61	6 340	8 190	
	29,39	102	49,67	4 555	51,0	31,29	5 740	34,0	22,92	6 305	7 805	
PH318 - E	37,82	79,3	39,60	4 625	39,7	24,36	5 690	26,4	18,35	6 430	8 870	28
	43,73	68,6	35,29	4 765	34,3	21,72	5 865	22,9	16,34	6 620	8 870	
	50,57	59,3	33,21	5 185	29,7	20,93	6 535	19,8	15,97	7 480	8 870	
	55,76	53,8	32,76	5 640	26,9	20,63	7 105	17,9	15,74	8 130	8 190	
	63,15	47,5	29,41	5 735	23,8	18,52	7 225	15,8	14,14	8 270	8 190	
	66,43	45,2	28,42	5 830	22,6	17,90	7 345	15,1	13,67	8 410	8 985	
	74,54	40,2	26,98	6 210	20,1	17,00	7 825	13,4	11,86	8 190	8 190	
	78,41	38,3	26,08	6 315	19,1	16,44	7 960	12,8	11,28	8 190	8 190	
	88,85	33,8	22,82	6 260	16,9	14,37	7 885	11,3	10,19	8 385	8 870	
	93,42	32,1	22,66	6 535	16,1	14,27	8 230	10,7	10,38	8 985	8 985	
	111,0	27,0	20,20	6 920	13,5	12,72	8 715	9,01	8,73	8 975	8 985	
	130,8	22,9	18,10	7 310	11,5	11,05	8 925	7,65	7,44	9 010	8 985	
	155,6	19,3	16,30	7 830	9,64	9,10	8 740	6,43	6,28	9 050	8 190	
	172,8	17,4	12,32	6 575	8,68	6,43	6 865	5,79	4,40	7 040	7 805	
	203,6	14,7	10,57	6 645	7,37	5,51	6 935	4,91	3,77	7 115	7 805	
PH418 - E	166,3	18,0	15,56	7 915	9,02	8,82	8 975	6,01	5,94	9 060	8 985	22
	192,3	15,6	14,13	8 310	7,80	7,66	9 005	5,20	5,15	9 095	8 985	
	222,3	13,5	12,82	8 720	6,75	6,65	9 040	4,50	4,54	9 265	8 985	
	257,0	11,7	11,34	8 920	5,84	5,77	9 070	3,89	4,02	9 490	8 985	
	277,8	10,8	10,52	8 935	5,40	5,35	9 085	3,60	3,78	9 630	8 985	
	312,6	9,60	9,37	8 965	4,80	4,79	9 165	3,20	3,40	9 765	8 985	
	350,4	8,56	7,65	8 200	4,28	3,96	8 485	2,85	2,80	9 005	8 870	
	390,6	7,68	7,53	9 000	3,84	3,98	9 510	2,56	2,79	10 000	8 985	
	451,6	6,64	6,51	9 000	3,32	3,52	9 720	2,21	2,41	10 000	8 985	
	518,3	5,79	5,21	8 265	2,89	2,83	8 985	1,93	1,96	9 330	8 190	
	558,2	5,37	5,27	9 000	2,69	2,93	10 000	1,79	1,95	10 000	8 985	
	632,3	4,74	4,65	9 000	2,37	2,58	10 000	1,58	1,72	10 000	8 985	
	678,9	4,42	4,33	9 000	2,21	2,41	10 000	1,47	1,60	10 000	8 985	
	785,0	3,82	3,75	9 000	1,91	2,08	10 000	1,27	1,39	10 000	8 985	
	906,3	3,31	3,25	9 000	1,66	1,80	10 000	1,10	1,20	10 000	8 985	
	954,7	3,14	3,08	9 000	1,57	1,71	10 000	1,05	1,14	10 000	8 985	
	1 099	2,73	2,42	8 120	1,36	1,26	8 480	0,91	0,86	8 700	8 985	
	1 271	2,36	2,32	9 000	1,18	1,29	10 000	0,79	0,86	10 000	8 190	
	1 347	2,23	2,14	8 830	1,11	1,12	9 200	0,74	0,74	9 200	8 986	
	1 578	1,90	1,86	9 000	0,95	1,04	10 000	0,63	0,69	10 000	8 190	
1 766	1,70	1,41	7 605	0,85	0,72	7 805	0,57	0,48	7 805	7 805		
1 874	1,60	1,57	9 000	0,80	0,87	10 000	0,53	0,58	10 000	8 190		
2 081	1,44	1,21	7 680	0,72	0,61	7 805	0,48	0,41	7 805	7 805		

Rapporti superiori sono possibili. Contattare il ns. Servizio Tecnico Commerciale per eventuali richieste

(*) Per posizioni di montaggio V5/V6 PT=30kW - For mounting position V5/V6 PT=30kW

Higher ratios are available. Contact our Technical Service for possible questions

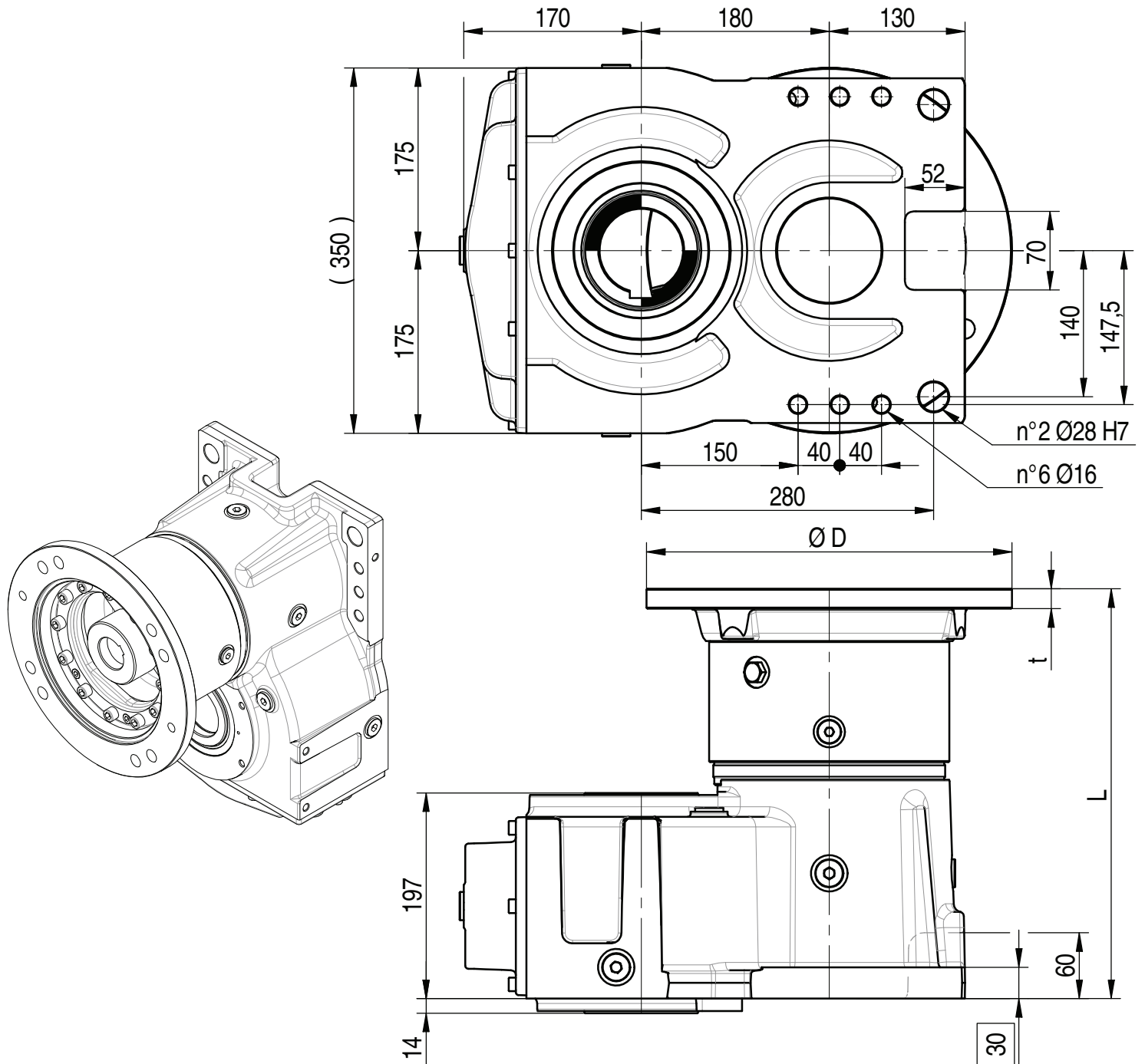
Höhere Übersetzungen sind möglich, kontaktieren Sie unseren technischen Vertriebservice für Ihre Anfragen

Rapports supérieurs possibles, contacter notre service technico-commercial pour toute information

Una relación superior es posible. Solicitar información a nuestro Servicio Técnico Comercial

Relações superiores podem ser disponíveis. Entre em contato com o nosso Serviço Técnico Comercial para obter informações

Planetary helical gearboxes / Planeten-Stirradgetriebe / Réducteurs à arbres cylindriques / Reductores con ejes paralelos / Redutores de eixos paralelos



Predisizini IEC / IEC adaptor / IEC-Motorlaterne									
Prédisposition IEC / Predisposición para el motor IEC / Adaptador IEC									
INPUT 00	80	90	100-112	132	160	180	200	225	
-	200	200	250	300	350	350	400	450	D
-	14,5	14,5	15	19	19	19	19	22	t
PH218 - E	316,5 (130 Kg)	-	-	411,5 (140 Kg)	392,5 (150 Kg)	392,5 (150 Kg)	392,5 (150 Kg)	422,5 (160 Kg)	L (Peso*) (Weight*)
PH318 - E	355,5 (138 Kg)	-	375 (143 Kg)	411 (148 Kg)	436,5 (158 Kg)	436,5 (158 Kg)	436,5 (158 Kg)	466,5 (168 Kg)	
PH418 - E	399,5 (143 Kg)	411 (148 Kg)	411 (148 Kg)	419 (148 Kg)	-	-	-	-	

(*) I pesi sono indicativi / Weights are indicative

Bevel planetary helical gearboxes / Planeten-Kegelstirradgetriebe / Réducteurs à arbres cylindro-cônes / Reductores con ejes perpendiculares / Redutores de eixos ortogonais

	i _{eff}	n ₁ = 3000 min ⁻¹			n ₁ = 1500 min ⁻¹			n ₁ = 1000 min ⁻¹			T ₂₁₅₀ [Nm]	P _T [kW]
		n ₂ [min ⁻¹]	P _{N1} [kW]	T _{N2} [Nm]	n ₂ [min ⁻¹]	P _{N1} [kW]	T _{N2} [Nm]	n ₂ [min ⁻¹]	P _{N1} [kW]	T _{N1} [Nm]		
BPH318 - E BPC318 - E	27,54	109	40,91	3 460	54,5	25,18	4 260	36,3	18,96	4 815	8 870	25 (*)
	31,84	94,2	40,46	3 960	47,1	24,91	4 875	31,4	18,75	5 505	8 870	
	34,40	87,2	40,91	4 325	43,6	25,18	5 325	29,1	18,96	6 010	8 985	
	40,60	73,9	40,65	5 070	36,9	25,18	6 285	24,6	18,96	7 100	8 190	
	48,37	62,0	35,29	5 245	31,0	22,23	6 610	20,7	16,97	7 570	8 985	
	57,46	52,2	31,46	5 555	26,1	19,82	7 000	17,4	14,66	7 770	8 985	
	67,82	44,2	28,88	6 020	22,1	18,19	7 580	14,7	13,10	8 190	8 190	
	78,39	38,3	25,58	6 160	19,1	16,01	7 715	12,8	11,73	8 475	8 480	
	93,12	32,2	22,80	6 525	16,1	13,64	7 810	10,7	9,33	8 005	8 985	
	109,9	27,3	20,93	7 070	13,6	12,12	8 190	9,10	8,08	8 190	8 190	
BPH418 - E BPC418 - E	112,1	26,8	15,48	5 275	13,4	9,53	6 495	8,92	7,18	7 335	8 870	20
	121,1	24,8	17,13	6 305	12,4	10,55	7 765	8,26	7,94	8 770	8 985	
	129,6	23,1	15,32	6 035	11,6	9,42	7 425	7,72	7,09	8 385	8 985	
	140,0	21,4	15,48	6 590	10,7	9,53	8 110	7,14	7,04	8 985	8 985	
	161,9	18,5	15,31	7 535	9,27	9,11	8 970	6,18	6,13	9 055	8 985	
	170,3	17,6	13,50	6 985	8,81	8,31	8 600	5,87	5,84	9 070	8 985	
	202,2	14,8	11,96	7 355	7,42	7,31	8 985	4,94	4,94	9 120	8 985	
	233,8	12,8	11,84	8 415	6,41	6,37	9 050	4,28	4,38	9 340	8 985	
	275,6	10,9	10,55	8 840	5,44	5,42	9 085	3,63	3,82	9 590	8 985	
	309,6	9,69	8,74	8 230	4,84	4,37	8 225	3,23	2,91	8 225	8 190	
	337,8	8,88	7,89	8 100	4,44	4,12	8 460	2,96	2,82	8 675	8 985	
	398,2	7,53	6,76	8 185	3,77	3,53	8 550	2,51	2,41	8 765	8 985	
	458,0	6,55	6,49	9 040	3,28	3,45	9 615	2,18	2,39	10 000	8 190	
	494,3	6,07	6,03	9 060	3,03	3,27	9 840	2,02	2,25	10 130	8 985	
	547,5	5,48	5,02	8 350	2,74	2,62	8 720	1,83	1,79	8 940	8 985	
	583,5	5,14	5,12	9 085	2,57	2,80	9 930	1,71	1,96	10 450	8 190	
	645,3	4,65	4,30	8 435	2,32	2,25	8 810	1,55	1,54	9 035	8 985	
	693,1	4,33	4,40	9 265	2,16	2,41	10 165	1,44	1,66	10 485	8 190	
801,2	3,74	3,48	8 475	1,87	1,74	8 475	1,25	1,16	8 475	8 475		
945,6	3,17	3,36	9 660	1,59	1,74	10 000	1,06	1,16	10 000	8 190		
BPH518 - E BPC518 - E	842,8	3,56	3,79	9 615	1,78	2,00	10 160	1,19	1,36	10 360	8 985	18
	1 001	3,00	3,27	9 855	1,50	1,69	10 190	1,00	1,16	10 500	8 985	
	1 122	2,67	2,96	10 000	1,34	1,51	10 210	0,89	1,04	10 500	8 985	
	1 298	2,31	2,38	9 290	1,16	1,26	9 860	0,77	0,86	10 120	8 870	
	1 431	2,10	2,32	10 000	1,05	1,22	10 500	0,70	0,81	10 500	8 985	
	1 621	1,85	2,05	10 000	0,93	1,08	10 500	0,62	0,72	10 500	8 985	
	1 740	1,72	1,91	10 000	0,86	1,00	10 500	0,57	0,67	10 500	8 985	
	2 012	1,49	1,65	10 000	0,75	0,87	10 500	0,50	0,58	10 500	8 985	
	2 228	1,35	1,36	9 115	0,67	0,69	9 200	0,45	0,46	9 200	8 985	
	2 447	1,23	1,36	10 000	0,61	0,71	10 500	0,41	0,48	10 500	8 985	
	2 817	1,07	1,18	10 000	0,53	0,62	10 500	0,36	0,41	10 500	8 985	
	3 174	0,95	1,05	10 000	0,47	0,52	10 000	0,32	0,35	10 000	8 190	
	3 453	0,87	0,89	9 200	0,43	0,44	9 200	0,29	0,30	9 200	8 985	
	4 075	0,74	0,82	10 000	0,37	0,43	10 500	0,25	0,29	10 500	8 190	
	4 472	0,67	0,68	9 200	0,34	0,34	9 200	0,22	0,23	9 200	8 985	
	5 052	0,59	0,66	10 000	0,30	0,35	10 500	0,20	0,23	10 500	8 985	
	6 001	0,50	0,51	9 200	0,25	0,25	9 200	0,17	0,17	9 200	8 985	
7 083	0,42	0,47	10 000	0,21	0,25	10 500	0,14	0,16	10 500	8 190		

Rapporti superiori sono possibili. Contattare il ns. Servizio Tecnico Commerciale per eventuali richieste

(*) Per posizioni di montaggio B6/V5/V6 PT=20kW - For mounting position B6/V5/V6 PT=20kW

Higer ratios are available. Contact our Technical Service for possible questions

Höhere Übersetzungen sind möglich, Kontaktieren Sie unseren technischen Vertriebsservice für Ihre Anfragen

Rapports supérieurs possibles, contacter notre service technico-commercial pour toute information

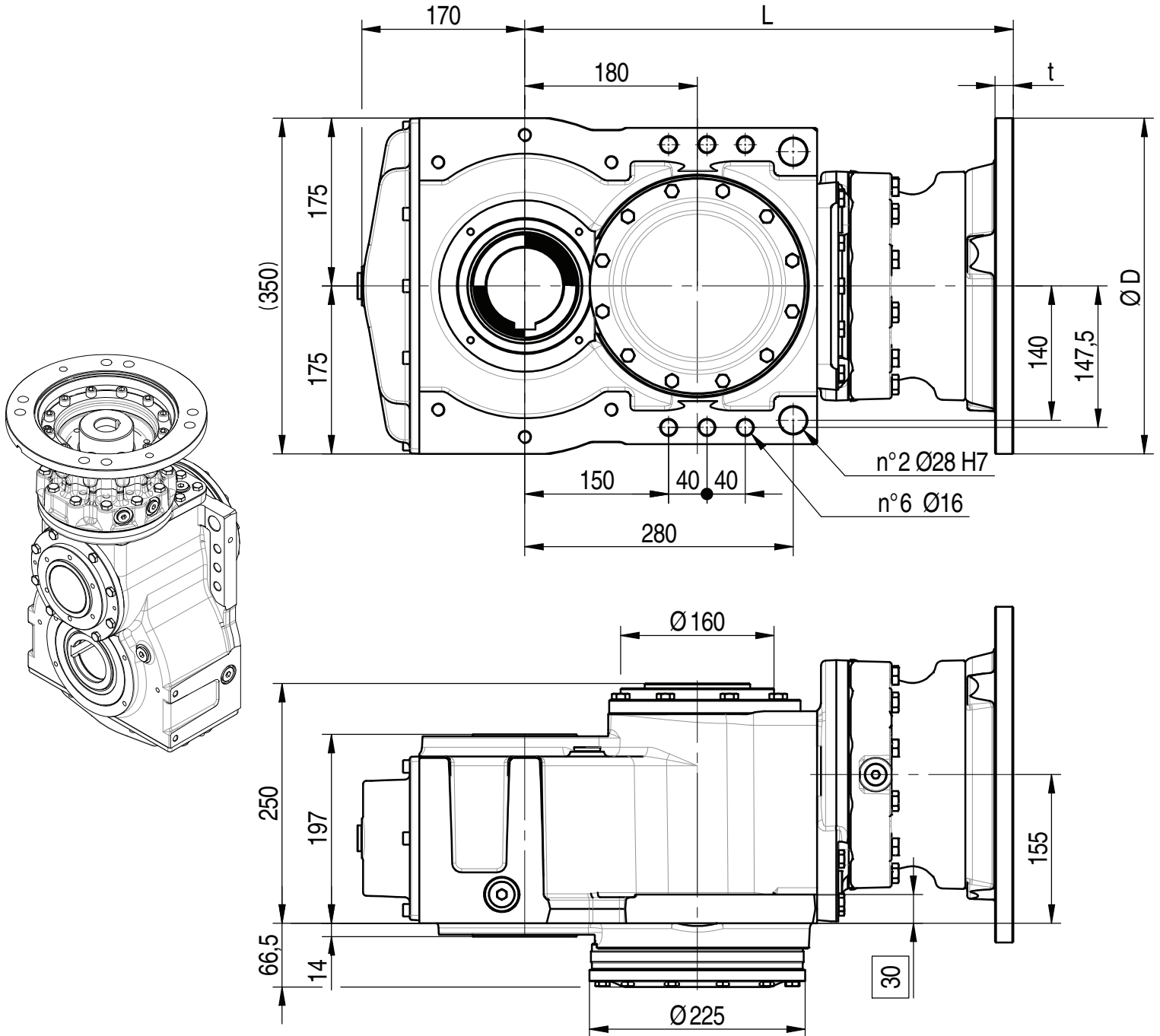
Una relación superior es posible. Solicitar información a nuestro Servicio Técnico Comercial

Relações superiores podem ser disponíveis. Entre em contato com o nosso Serviço Técnico Comercial para obter informações



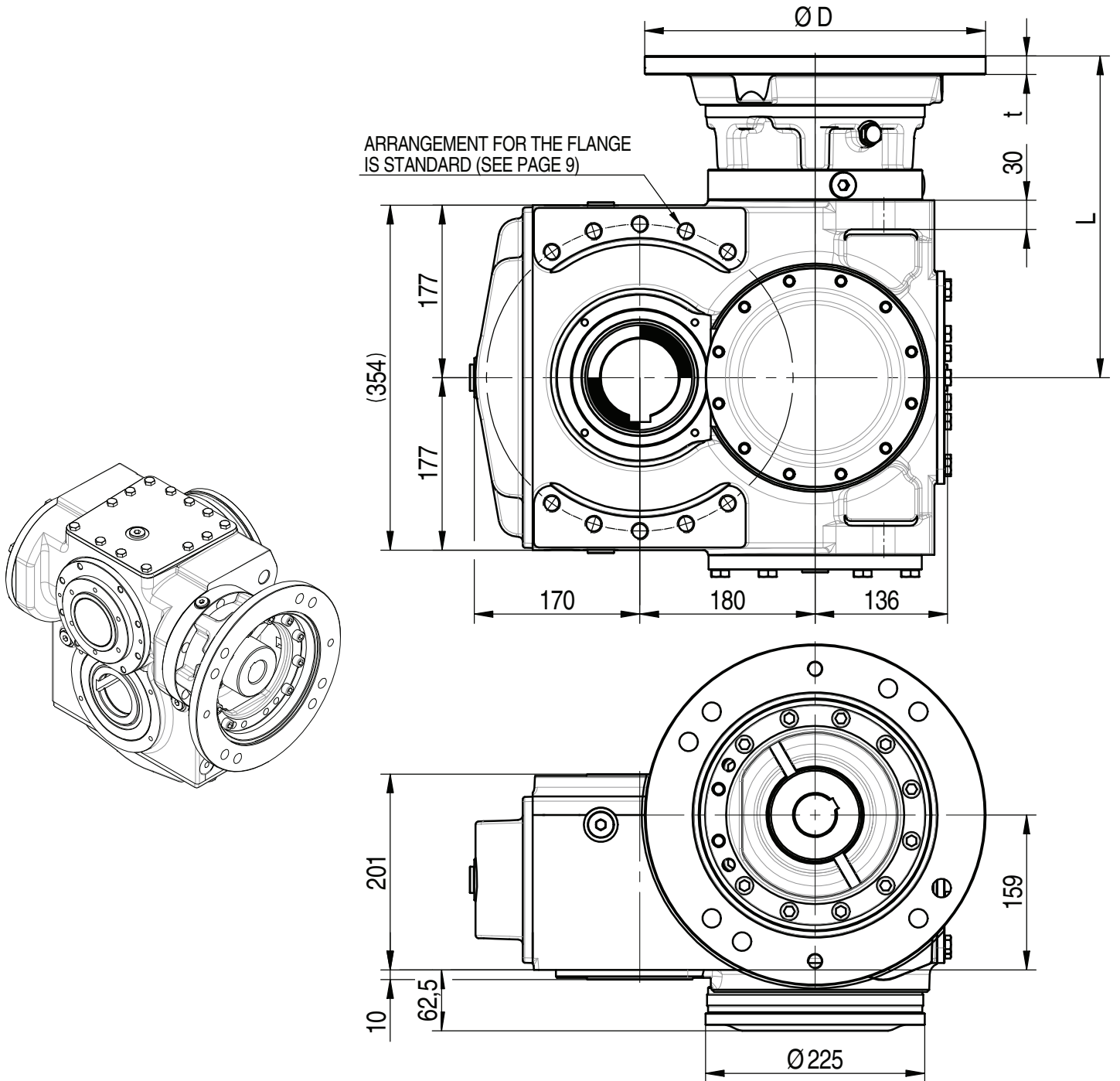
BREVINI

Motion Systems



Predisosizini IEC / IEC adaptor / IEC-Motorlaterne										
Prédisposition IEC / Predisposición para el motor IEC / Adaptador IEC										
INPUT 00	71	80	90	100-112	132	160	180	200	225	
-	170	200	200	250	300	350	350	400	450	D
-	22	14,5	14,5	15	18	19	19	19	22	t
BPH318 - E	434,3 (155 Kg)	-	-	-	-	509,5 (180 Kg)	509,5 (180 Kg)	509,5 (180 Kg)	539,5 (190 Kg)	L (Peso*) (Weight*)
BPH418 - E	472,8 (160 Kg)	-	-	484,3 (165 Kg)	492,3 (165 Kg)	528,3 (170 Kg)	554 (185 Kg)	554 (185 Kg)	-	
BPH518 - E	516,8 (165 Kg)	538,8 (170 Kg)	528,3 (170 Kg)	528,3 (170 Kg)	536,3 (170 Kg)	572,3 (175 Kg)	-	-	-	

(*) I pesi sono indicativi / Weights are indicative



Predisosizini IEC / IEC adaptor / IEC-Motorlaterne										
Prédisposition IEC / Predisposición para el motor IEC / Adaptador IEC										
INPUT 00	71	80	90	100-112	132	160	180	200	225	
-	170	200	200	250	300	350	350	400	450	D
-	22	14,5	14,5	15	18	19	19	19	22	t
BPC318 - E	254,8 (175 Kg)	-	-	-	-	330 (200 Kg)	330 (200 Kg)	330 (200 Kg)	360 (210 Kg)	L (Peso*) (Weight*)
BPC418 - E	293,3 (180 Kg)	-	-	304,3 (185 Kg)	312,3 (185 Kg)	348,3 (190 Kg)	374 (205 Kg)	374 (205 Kg)	-	
BPC518 - E	337,3 (185 Kg)	359,3 (190 Kg)	348,8 (190 Kg)	348,8 (190 Kg)	356,8 (190 Kg)	392,8 (195 Kg)	-	-	-	

(*) I pesi sono indicativi / Weights are indicative

	$n_1 = 3000 \text{ min}^{-1}$			$n_1 = 1500 \text{ min}^{-1}$			$n_1 = 1000 \text{ min}^{-1}$			T_{2ISO} [Nm]	P_T [kW]	
	i_{eff}	n_2 [min^{-1}]	P_{N1} [kW]	T_{N2} [Nm]	n_2 [min^{-1}]	P_{N1} [kW]	T_{N2} [Nm]	n_2 [min^{-1}]	P_{N1} [kW]			T_{N1} [Nm]
BPW318 - E	27,54	109	40,91	3 460	54,5	25,18	4 260	36,3	18,96	4 815	8 870	26 (*)
	31,84	94,2	40,46	3 960	47,1	24,91	4 875	31,4	18,75	5 505	8 870	
	34,40	87,2	40,91	4 325	43,6	25,18	5 325	29,1	18,96	6 010	8 985	
	40,60	73,9	40,65	5 070	36,9	25,18	6 285	24,6	18,96	7 100	8 190	
	48,37	62,0	35,29	5 245	31,0	22,23	6 610	20,7	16,97	7 570	8 985	
	57,46	52,2	31,46	5 555	26,1	19,82	7 000	17,4	14,66	7 770	8 985	
	67,82	44,2	28,88	6 020	22,1	18,19	7 580	14,7	13,10	8 190	8 190	

Rapporti superiori sono possibili. Contattare il ns. Servizio Tecnico Commerciale per eventuali richieste

(*) Per posizioni di montaggio B6/V5/V6 PT=21kW - For mounting position B6/V5/V6 PT=21kW

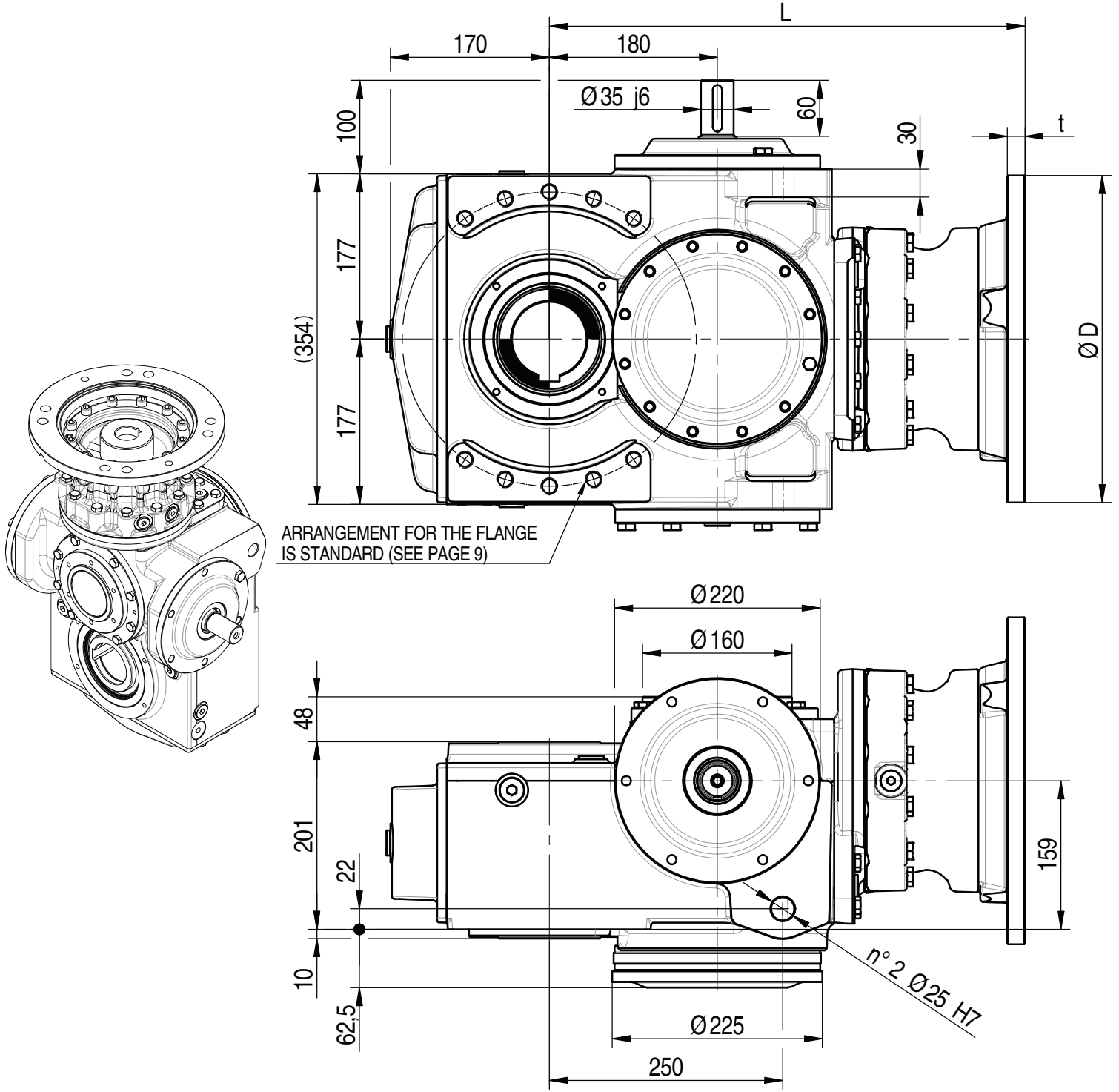
Higher ratios are available. Contact our Technical Service for possible questions

Höhere Übersetzungen sind möglich, kontaktieren Sie unseren technischen Vertriebsservice für Ihre Anfragen

Rapports supérieurs possibles, contacter notre service technico-commercial pour toute information

Una relación superior es posible. Solicitar información a nuestro Servicio Técnico Comercial

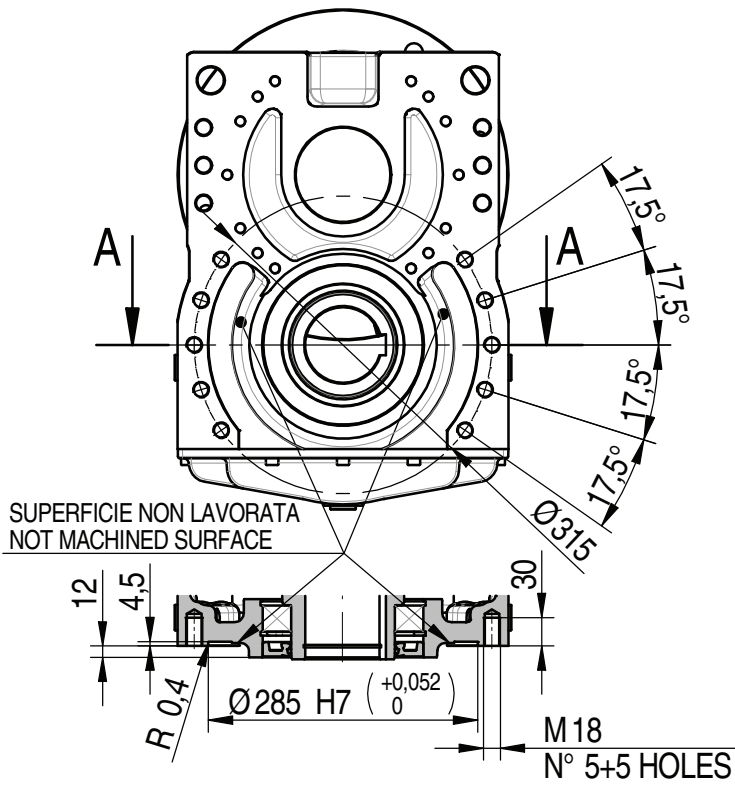
Relações superiores podem ser disponíveis. Entre em contato com o nosso Serviço Técnico Comercial para obter informações



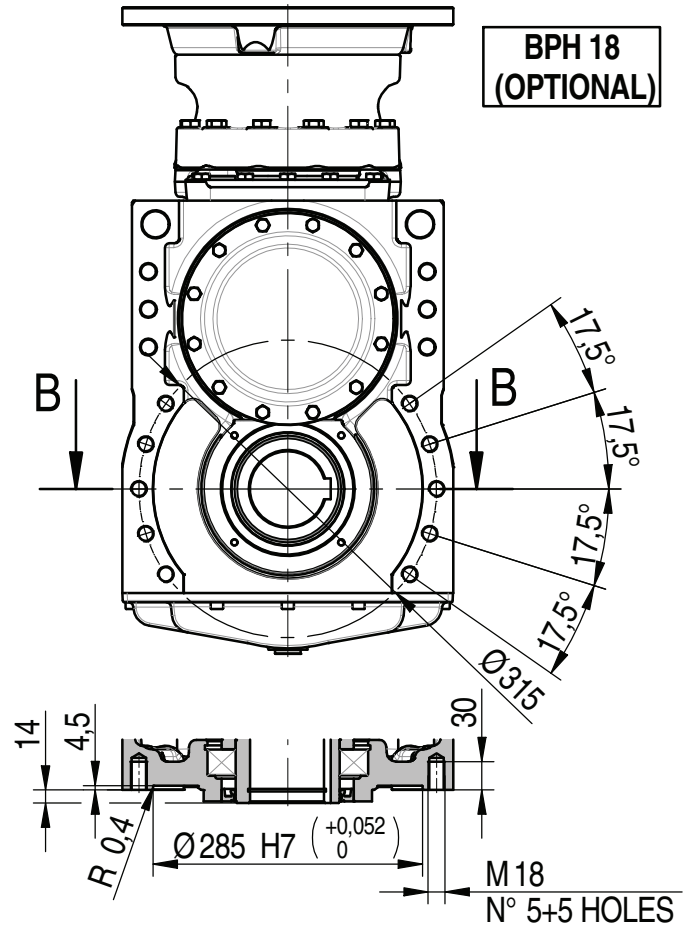
Predisosizini IEC / IEC adaptor / IEC-Motorlaterne										
Prédisposition IEC / Predisposición para el motor IEC / Adaptador IEC										
INPUT 00	71	80	90	100-112	132	160	180	200	225	
-	170	200	200	250	300	350	350	400	450	D
-	22	14,5	14,5	15	18	19	19	19	22	t
BPW318 - E	434,5 (185 Kg)	-	-	-	-	509,5 (210 Kg)	509,5 (210 Kg)	509,5 (210 Kg)	539,5 (220 Kg)	L (Peso*) (Weight*)

(*) I pesi sono indicativi / Weights are indicative

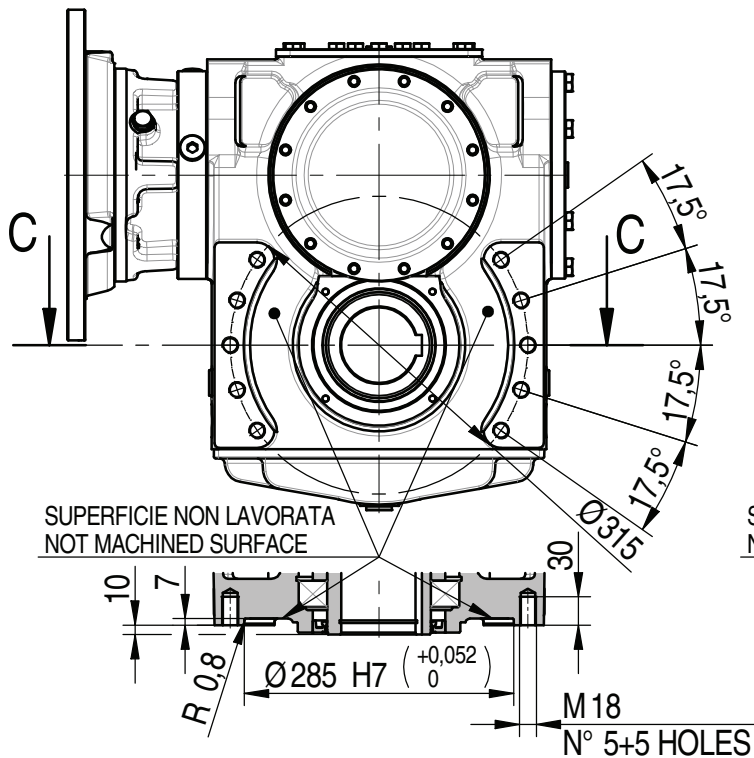
**PH 18
 (OPTIONAL)**



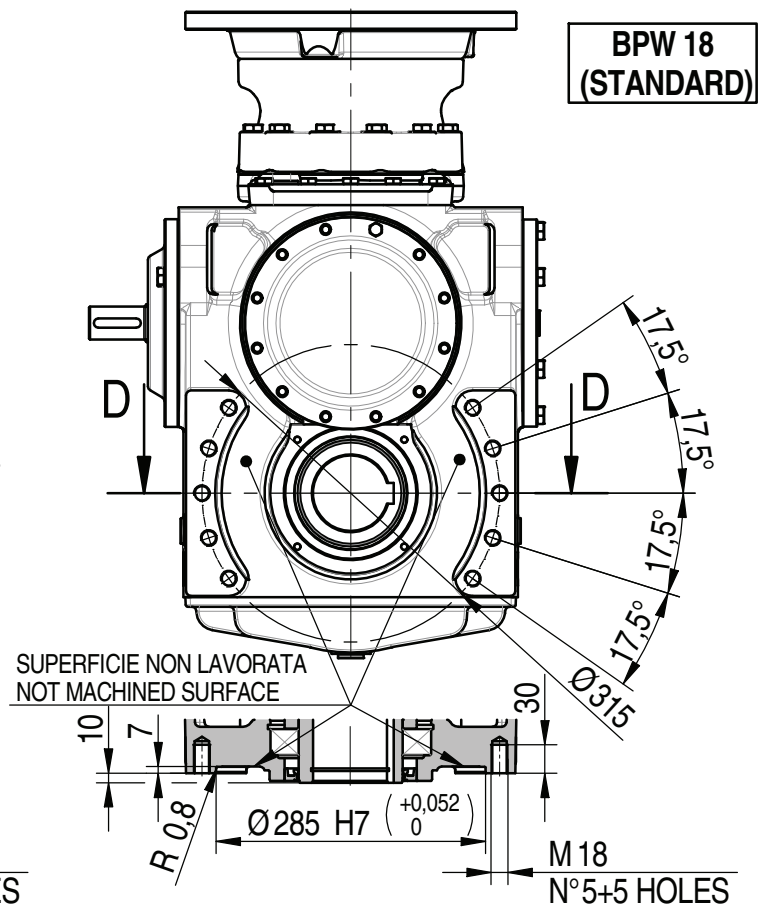
**BPH 18
 (OPTIONAL)**



**BPC 18
 (STANDARD)**

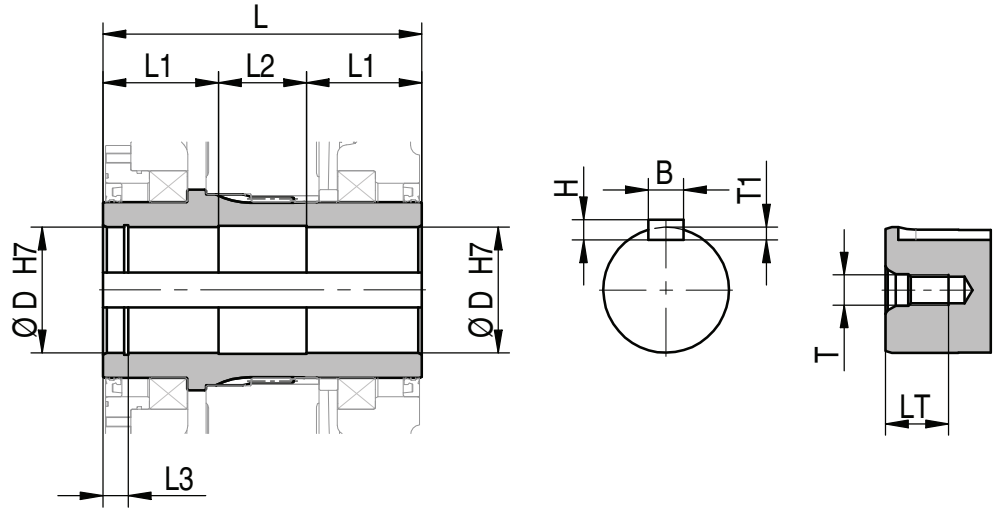


**BPW 18
 (STANDARD)**

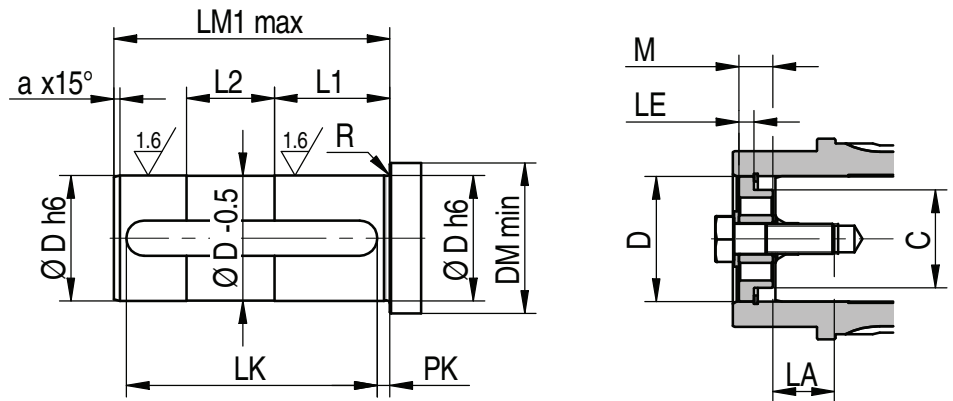


TAGLIA 18 - ALBERO CAVO "K"
 SIZE 18 - HOLLOW SHAFT "K"

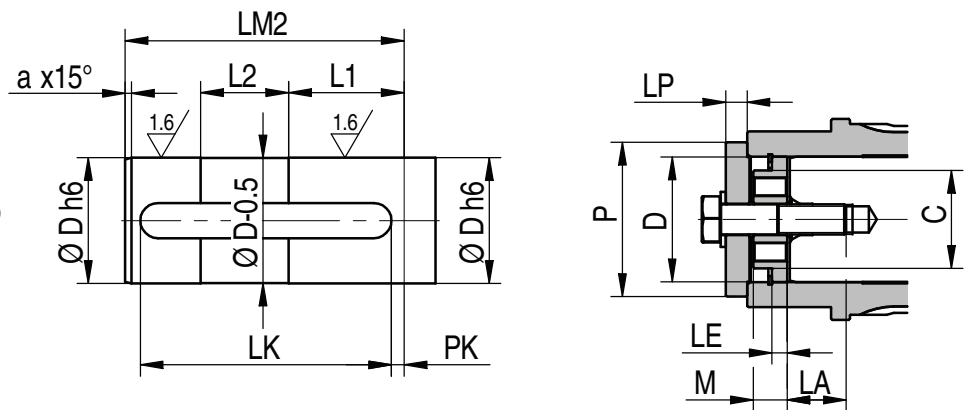
Albero uscita cavo
 con cava per linguetta
 Hollow shaft with keyway



Albero macchina con spallamento
 Machine shaft with shoulder



Albero macchina senza spallamento
 Machine shaft without shoulder



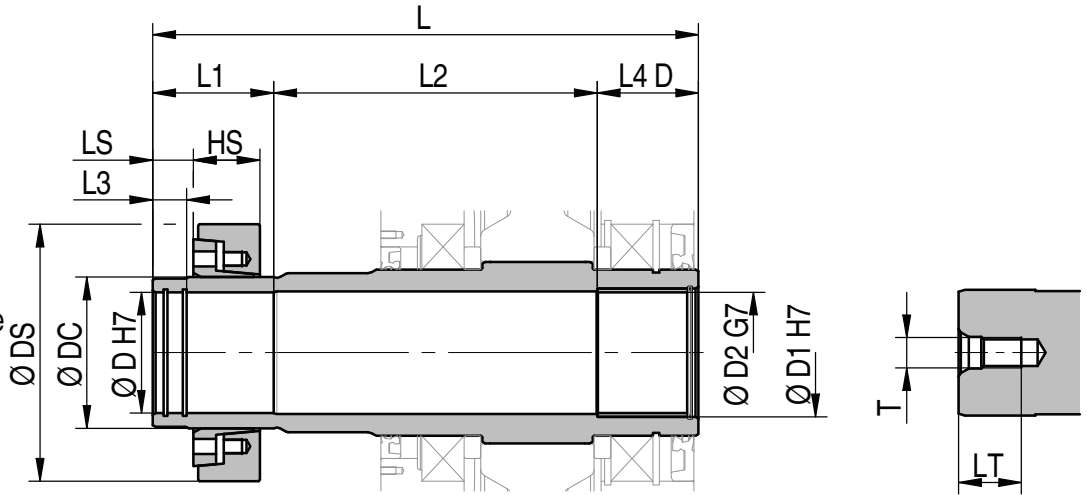
Taglia Size	Tipo Type	Riduttore Gear Unit					Albero macchina Machine shaft											
		D	L	L1	L2	L3	LM1 max	LM2	R	DM min	a	T	LT	B	T1	H	PK	LK
STANDARD																		
18	PH - BPH BPW - BPC	80	211	70	71	15	183	187	1,5	94	5	M20	42	22	9	14	10	160
SOLO SU RICHIESTA / ONLY ON REQUEST																		
18	PH - BPH BPW - BPC	90	211	70	71	15	183	186	1,5	104	5	M24	52	25	9	14	10	160

KIT FONDELLO - per albero macchina con spallamento (OPTIONAL) END PLATE KIT - for machine shaft with shoulder (OPTIONAL)						
Codice / code	D	C	LE	M	LA	Vite / Screw
KF01080	80	60	9	20,5	40,5	M20x65
KF01090	90	70	10	23	52	M24x75

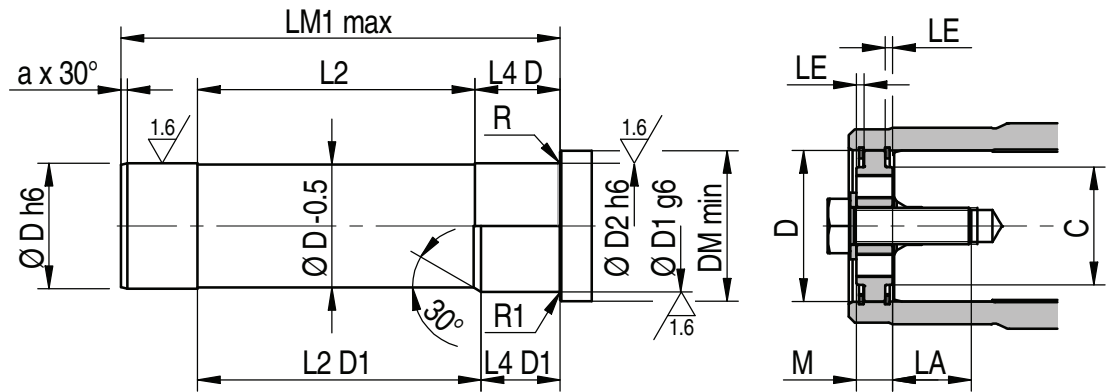
KIT DISCO E FONDELLO - per albero macchina senza spallamento (OPTIONAL) PLATE AND END PLATE KIT - for machine shaft without shoulder (OPTIONAL)								
Codice / code	D	C	P	LP	LE	M	LA	Vite / Screw
KF12080	80	60	99	9	9	20,5	38	M20x75
KF12090	90	70	113	15	10	23	46	M24x75

TAGLIA 18 - PH - ALBERO CAVO "D"
 SIZE 18 - PH - HOLLOW SHAFT "D"

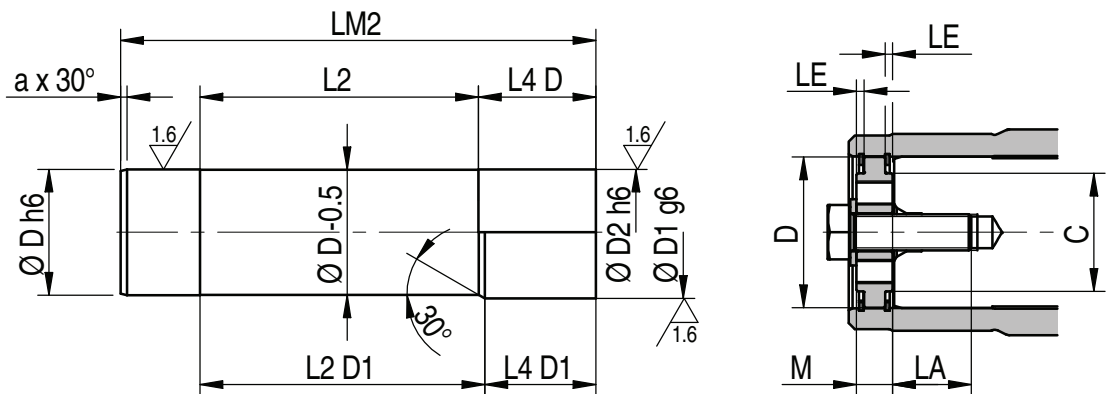
Albero uscita con calettatore
 Hollow shaft for shrink disc



Albero macchina con spallamento
 Machine shaft with shoulder



Albero macchina senza spallamento
 Machine shaft without shoulder

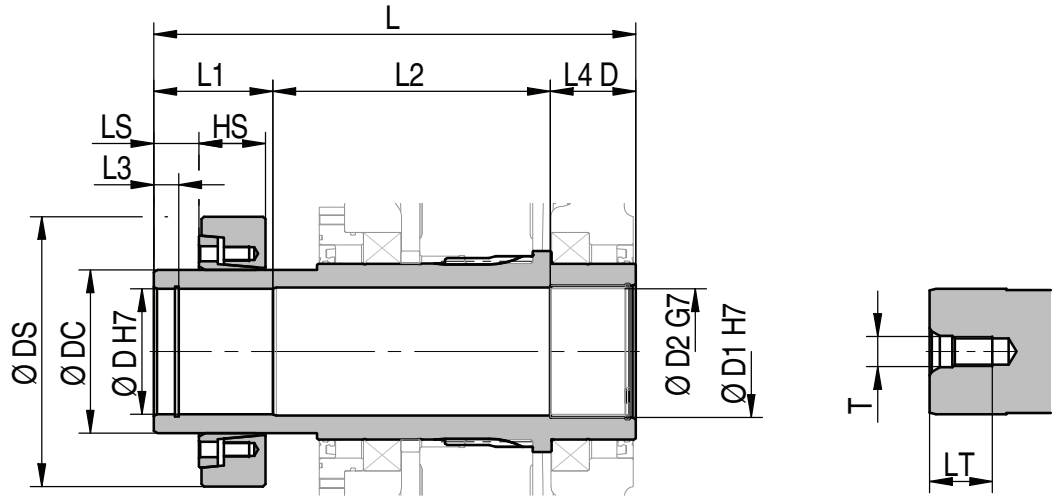


Taglia Size	Tipo Type	Riduttore Gear Unit								Albero macchina Machine shaft										Calettatore (OPTIONAL) Shrink disc (OPTIONAL)			
		D	D1	D2	L	L1	L2	L2 D1	L3	L4 D	L4 D1	LM1 max	LM2	R	R1	DM min	a	T	LT	DC	DS	HS	LS
STANDARD																							
18	PH	80	85	-	361	80	214	216	22,5	67	65	335	337	3,5	1,5	100	3	M20	46	100	170	44	27
OPTIONAL																							
18	PH	80	-	80	361	80	214	216	22,5	67	65	335	337	3,5	1,5	100	3	M20	46	100	170	44	27

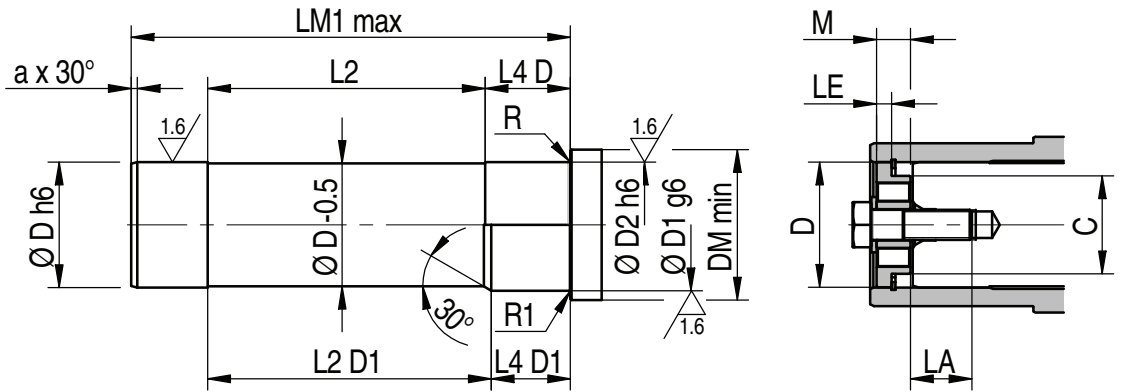
KIT FONDELLO - per albero macchina con spallamento (OPTIONAL) END PLATE KIT - for machine shaft with shoulder (OPTIONAL)						
Codice / code	D	C	LE	M	LA	Vite / Screw
1314291	80	60	4	18	43	M20x65

TAGLIA 18 - BPH BPW BPC - ALBERO CAVO "D"
 SIZE 18 - BPH BPW BPC - HOLLOW SHAFT "D"

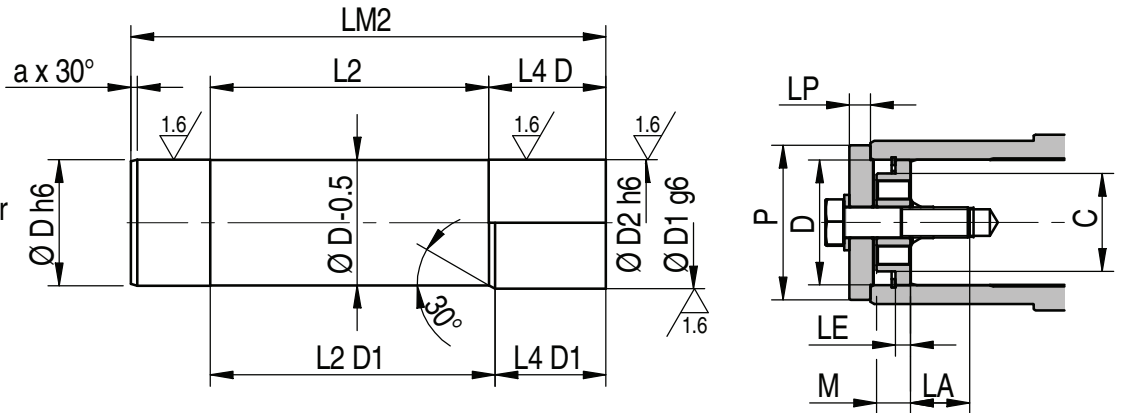
Albero uscita con calettatore
 Hollow shaft for shrink disc



Albero macchina con spallamento
 Machine shaft with shoulder



Albero macchina senza spallamento
 Machine shaft without shoulder



Taglia Size	Tipo Type	Riduttore Gear Unit								Albero macchina Machine shaft										Calettatore (OPTIONAL) Shrink disc (OPTIONAL)			
		D	D1	D2	L	L1	L2	L2 D1	L3	L4 D	L4 D1	LM1 max	LM2	R	R1	DM min	a	T	LT	DC	DS	HS	LS
18	BPH BPW BPC	STANDARD																					
		80	85	-	316	80	169	171	15	67	65	288	292	3,5	1,5	100	3	M20	46	100	170	44	27
18	BPH BPW BPC	OPTIONAL																					
		80	-	80	316	80	169	171	15	67	65	288	292	3,5	1,5	100	3	M20	46	100	170	44	27

KIT FONDELLO - per albero macchina con spallamento (OPTIONAL)
 END PLATE KIT - for machine shaft with shoulder (OPTIONAL)

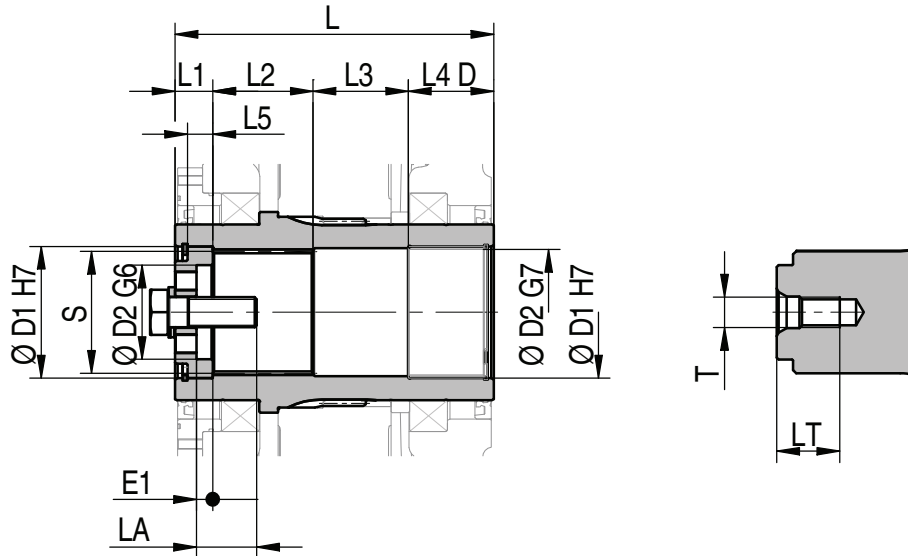
Codice / code	D	C	LE	M	LA	Vite / Screw
KF01080	80	60	9	20,5	40,5	M20x65

KIT DISCO E FONDELLO - per albero macchina senza spallamento (OPTIONAL)
 PLATE AND END PLATE KIT - for machine shaft without shoulder (OPTIONAL)

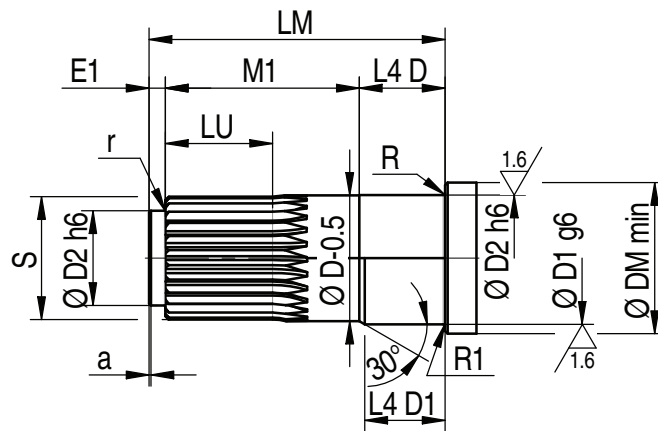
Codice / code	D	C	P	LP	LE	M	LA	Vite / Screw
KF12080	80	60	99	9	9	20,5	38	M20x75

TAGLIA 18 - ALBERO CAVO "S"
 SIZE 18 - HOLLOW SHAFT "S"

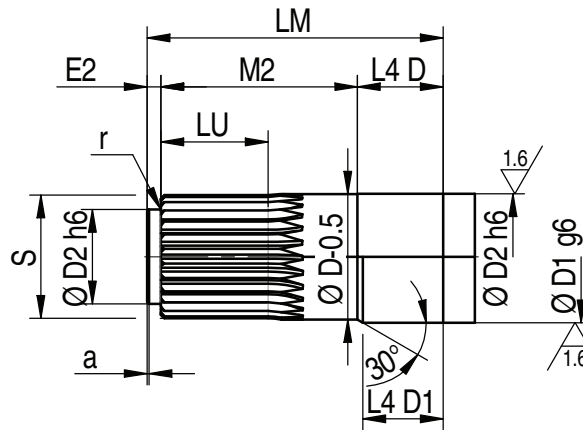
Albero uscita cavo scanalato
 Splined hollow shaft



Albero macchina con spallamento
 Machine shaft with shoulder



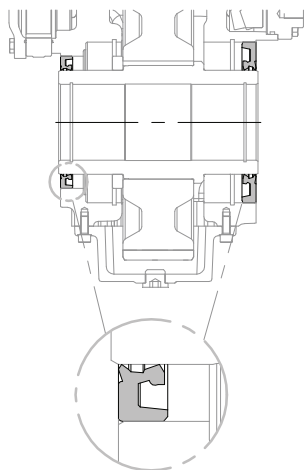
Albero macchina senza spallamento
 Machine shaft without shoulder



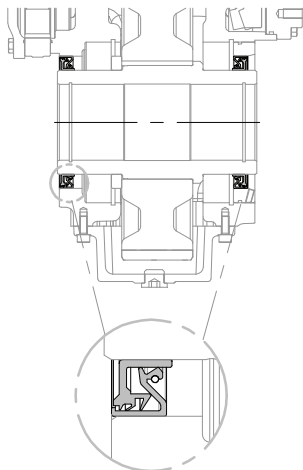
Taglia Size	Tipo Type	Riduttore Gear unit											Albero macchina Machine shaft											Fondello (STANDARD) End plate (STANDARD)				
		S	D	D1	D2	L	L1	L2	L3	L5	L4 D	L4 D1	LM	R	R1	DM min	D2 a	r	E1	E2	LU	M1	M2	T	LT	LA	code	
STANDARD																												
18	PH BPH BPW BPC	80x74 DIN 5482	80	85	-	211	25	60	66	16	60	55	194	3,5	1,5	100	55	2	0,8	10	8	65	124	126	M20	42	41	KF03080 (M20x60)
STANDARD																												
18	PH BPH BPW BPC	80x74 DIN 5482	80	-	80	211	25	60	66	16	60	55	194	3,5	1,5	100	55	2	0,8	10	8	65	124	126	M20	42	41	KF03080 (M20x60)

TENUTE / SEALING SYSTEMS

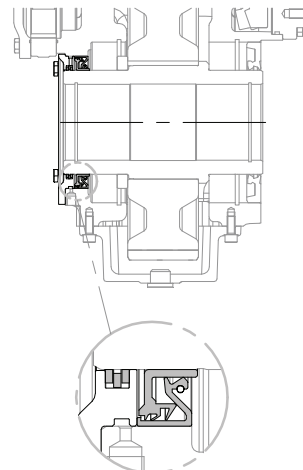
UN ANELLO DI TENUTA
 SINGLE SHAFT SEAL
 • NBR (STADARD)
 • FKM (OPTIONAL)



(OPTIONAL)
 TENUTE A CASSETTA
 CASSETTE SEAL
 • NBR
 • FKM / FKM

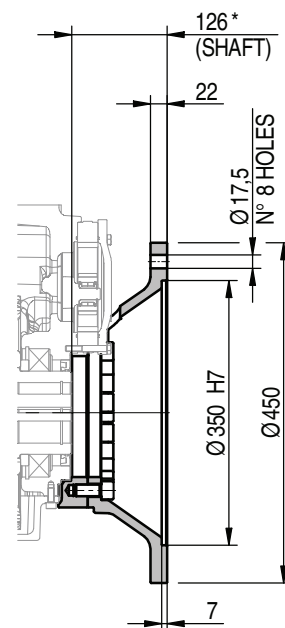
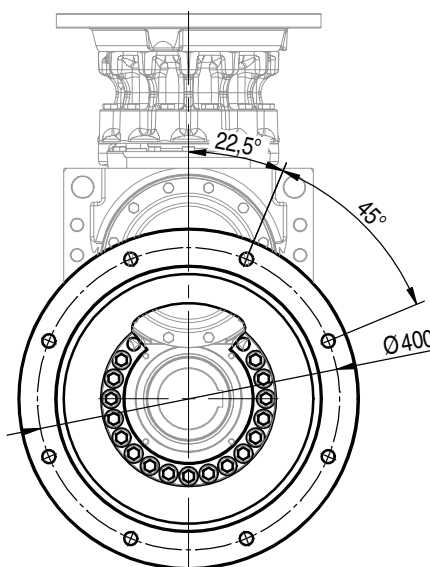
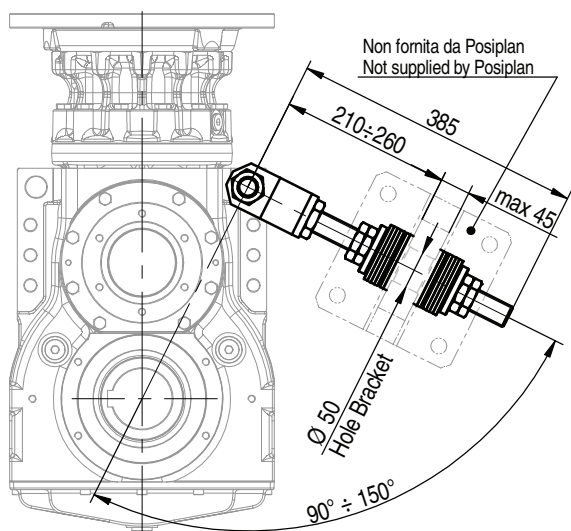


(OPTIONAL)
 (Available only for BPH machine side)
 TENUTE A LABIRINTO
 CON GRASSO RIALIMENTABILE
 REFILLABLE GRASED LABYRINTH
 SEALS



KIT DI REAZIONE
 REACTION KIT
 code: IA00130

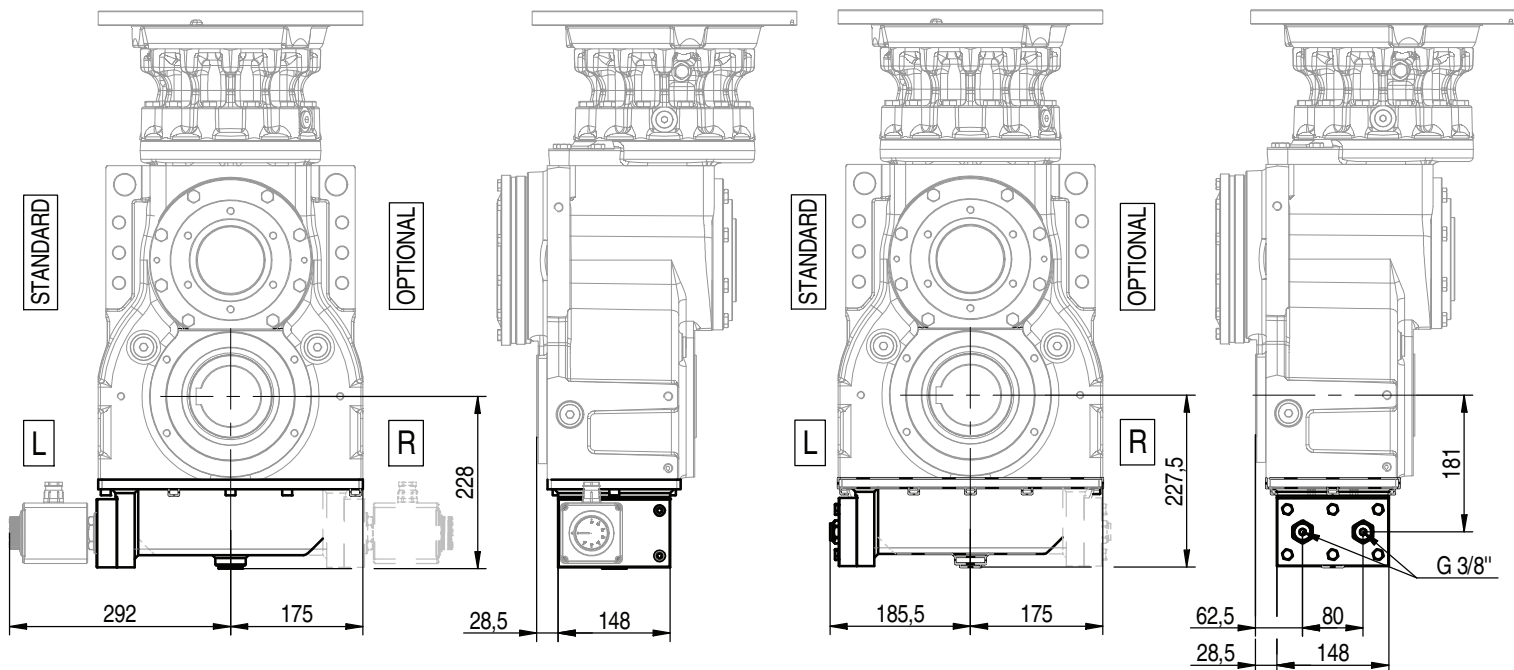
FLANGIA DI REAZIONE
 REACTION FLANGE
 code: 1313925 (for BPH/BPW)
 code: 1313924 (for PH)



* for BPW: distance is 130

SISTEMA DI RISCALDAMENTO
HEATING SYSTEM
 code: IA00260

SISTEMA DI RAFFREDDAMENTO
COOLING COIL SYSTEM
 code: IA00280

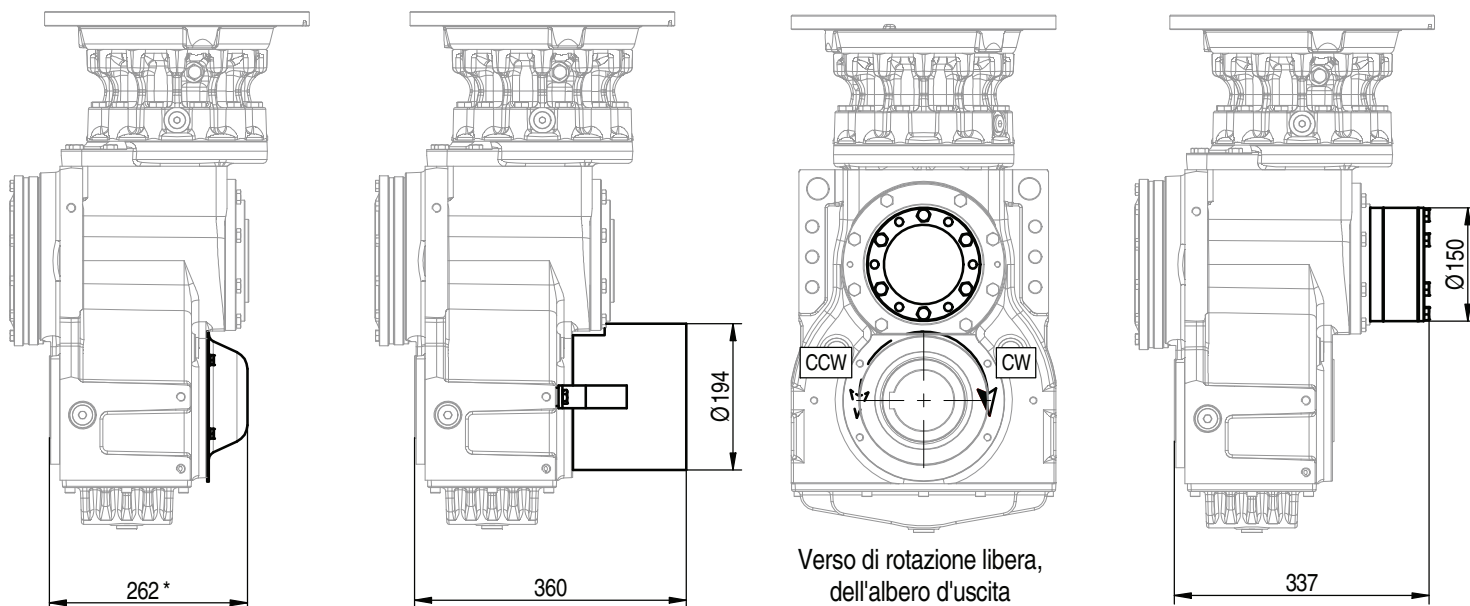


COPERCHIO ALBERO K/S
COVER FOR K/S SHAFT
 code: IA00322 (for BPH)
 code: 1312333 (for PH)

COPERCHIO ALBERO D
COVER FOR D SHAFT
 code: 1312145 (for BPH)
 code: 1312338 (for PH)

ANTIRETRO
BACKSTOP
 code: IA00184

Non applicabile nella versione PH
 Not applicable in PH version

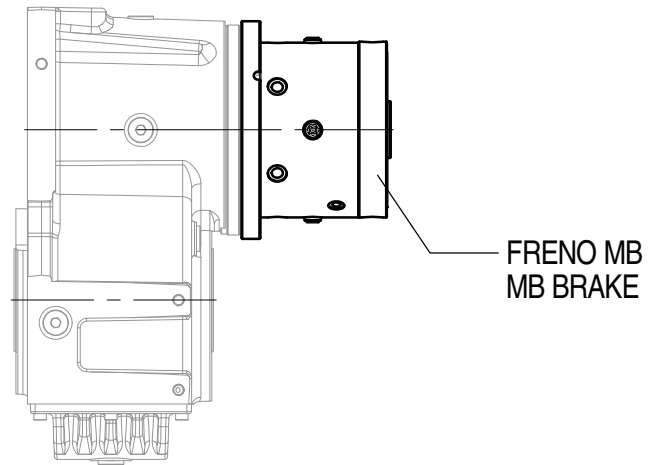
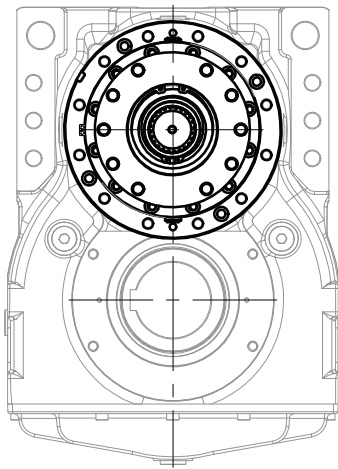


*for PH: distance is 253

Verso di rotazione libera,
 dell'albero d'uscita
 Output shaft free rotation

PH 18 CON FRENO MB / PH 18 WITH MB BRAKE

I riduttori possono essere equipaggiati in entrata con freno a dischi multipli in bagno d'olio ad apertura idraulica.
The gear unit inputs can be equipped with hydraulically released oil-bath multidisc brakes.



BPH 18 CON FRENO MB / BPH 18 WITH MB BRAKE

I riduttori possono essere equipaggiati in entrata con freno a dischi multipli in bagno d'olio ad apertura idraulica.
The gear unit inputs can be equipped with hydraulically released oil-bath multidisc brakes.

