

## INTERMEDIATE ELEMENT FOR VALVE CDC3R

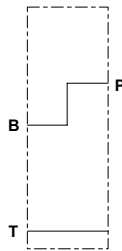


Intermediate element FI3BP for valve CDC3R to connect B to P lines

- Maximum flow 40 l/min.
- Aluminum body.

1

### HYDRAULIC SYMBOL



### FEATURES

Max. operating pressure	250 bar
Max. Flow	40 l/min
Hydraulic fluid	DIN 51524 Mineral oils
Fluid viscosity	10 ÷ 500 mm <sup>2</sup> /s
Fluid temperature	-25°C ÷ 75°C
Ambient temperature	-25°C ÷ 60°C
Max. contamination level (filter β <sub>25</sub> ≥ 75)	ISO 4406:1999: class 21/19/16 NAS 1638: class 10
Weight	0.4 kg

### ORDERING CODE

<b>FI</b>	Intermediate element
<b>3</b>	Size
<b>BP</b>	For valve CDC3R
<b>**</b>	<b>00</b> = No variant <b>V1</b> = Viton
<b>1</b>	Serial No.

### OVERALL DIMENSIONS

