

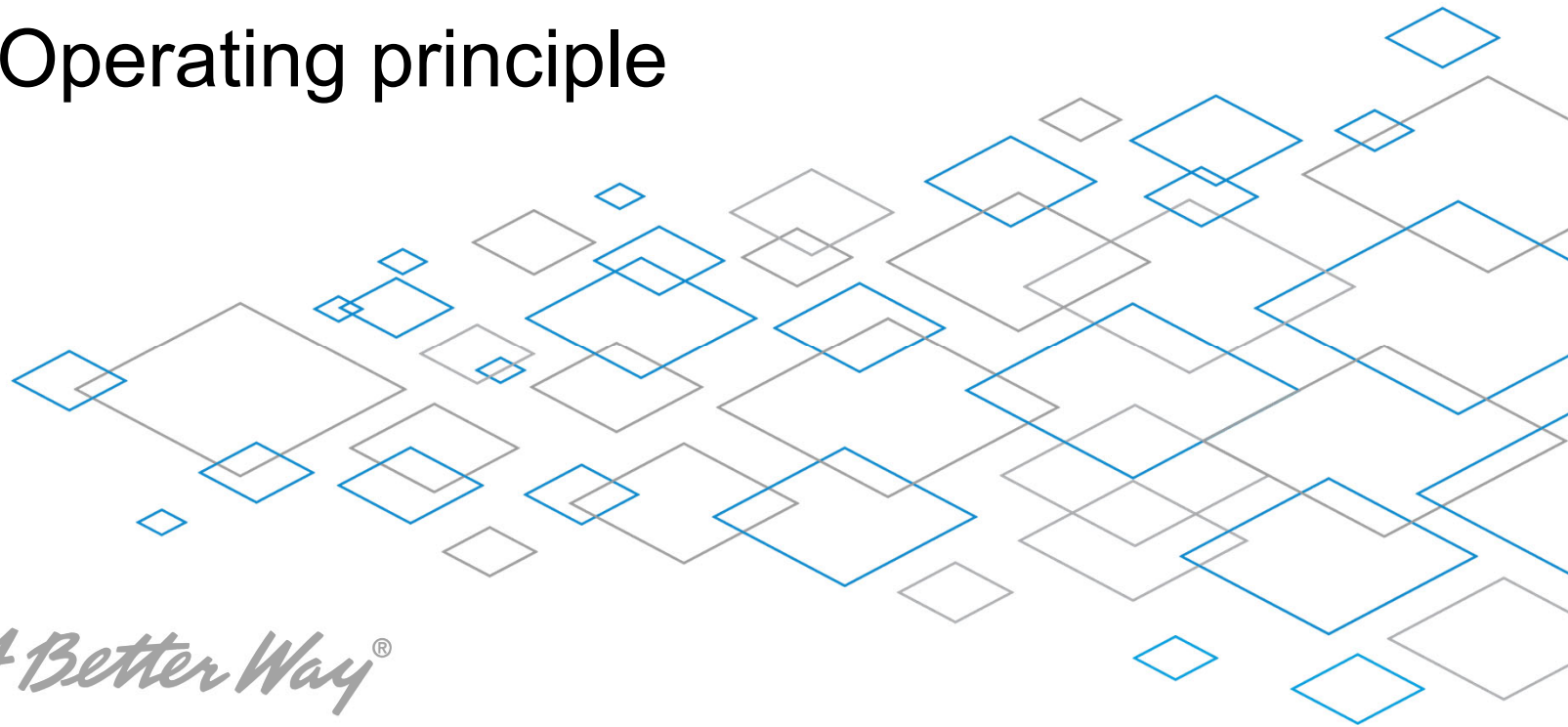


# QUICK RELEASE COUPLING

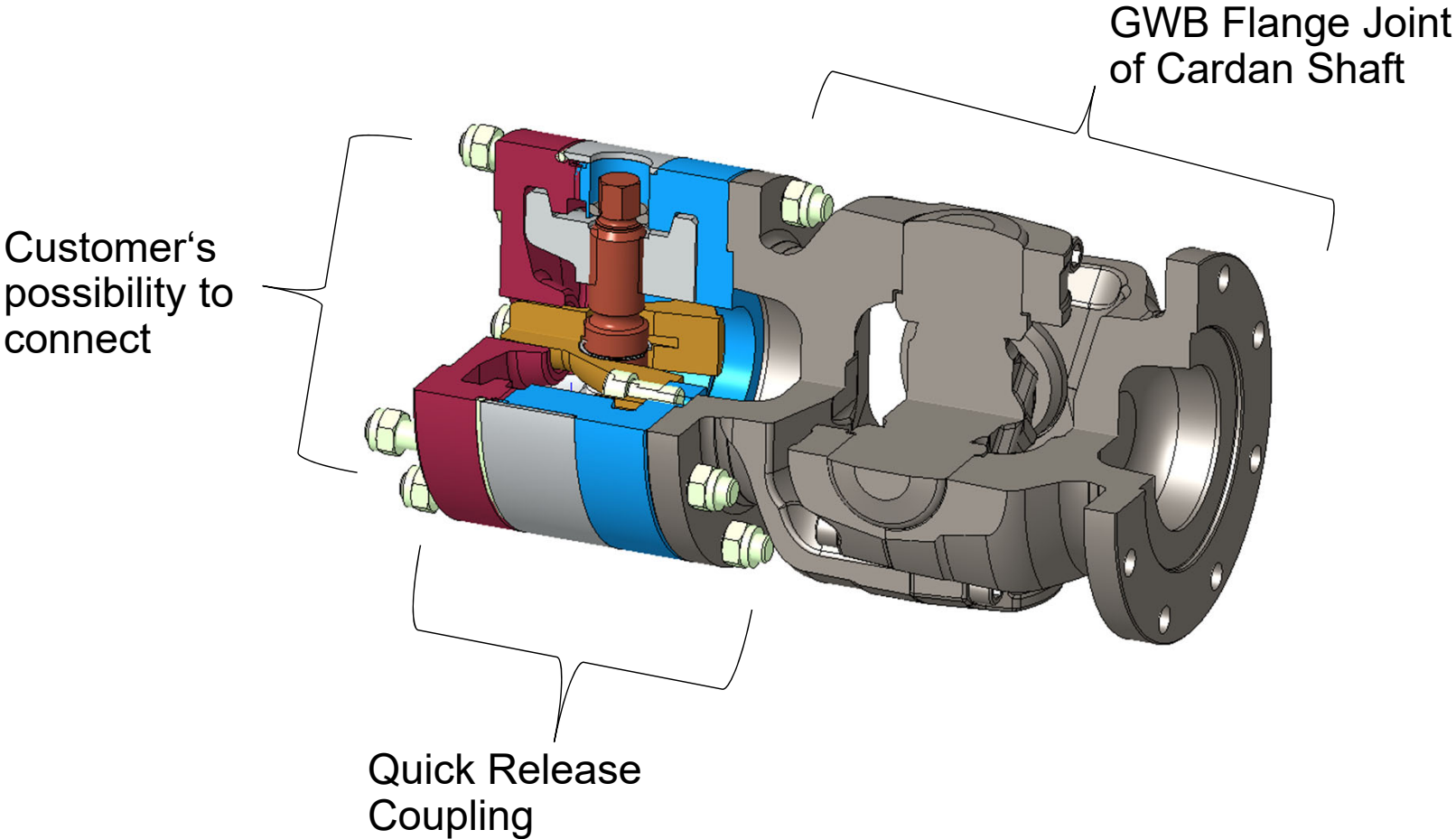
## Operating principle

Essen, 24.07.2019

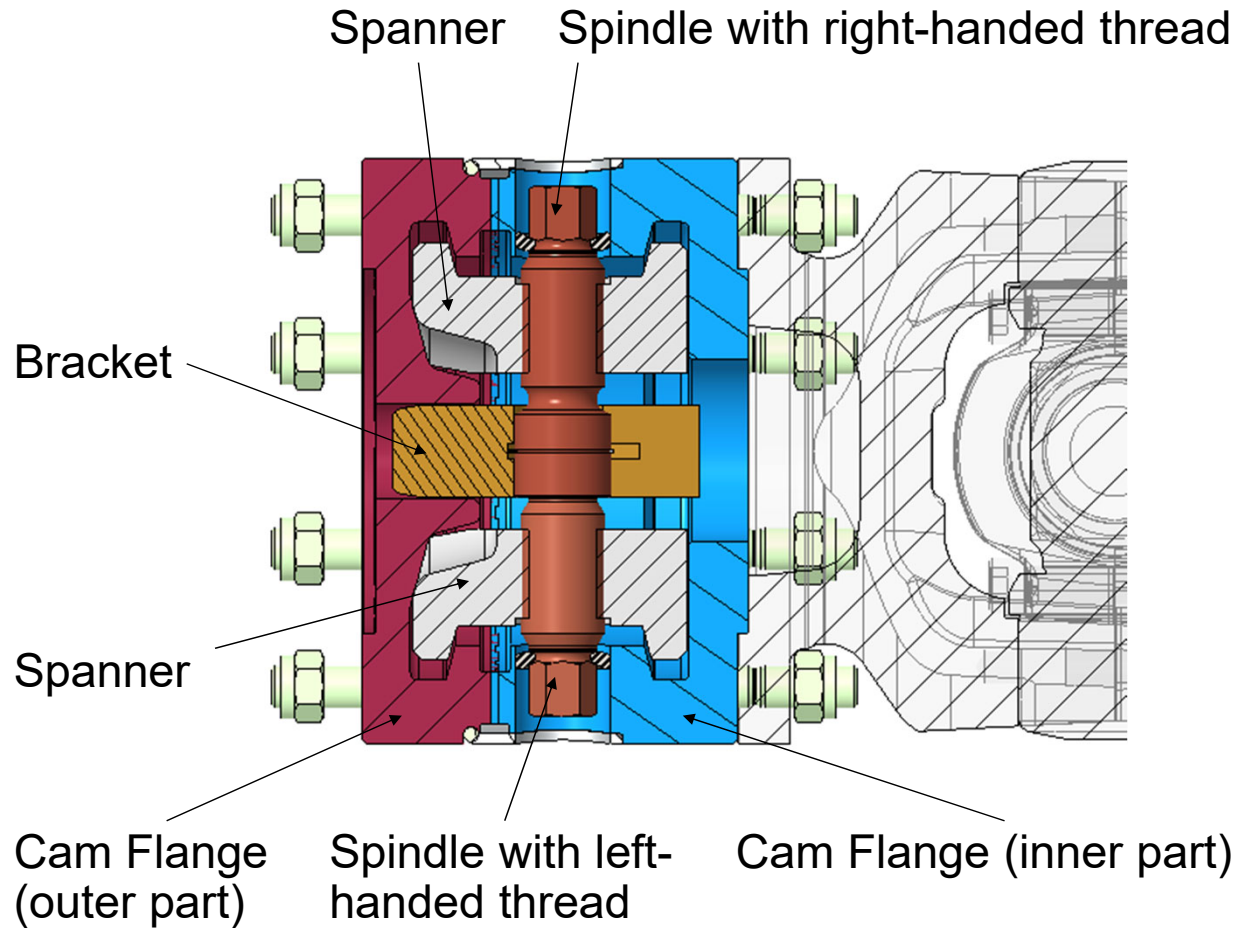
*People Finding A Better Way®*



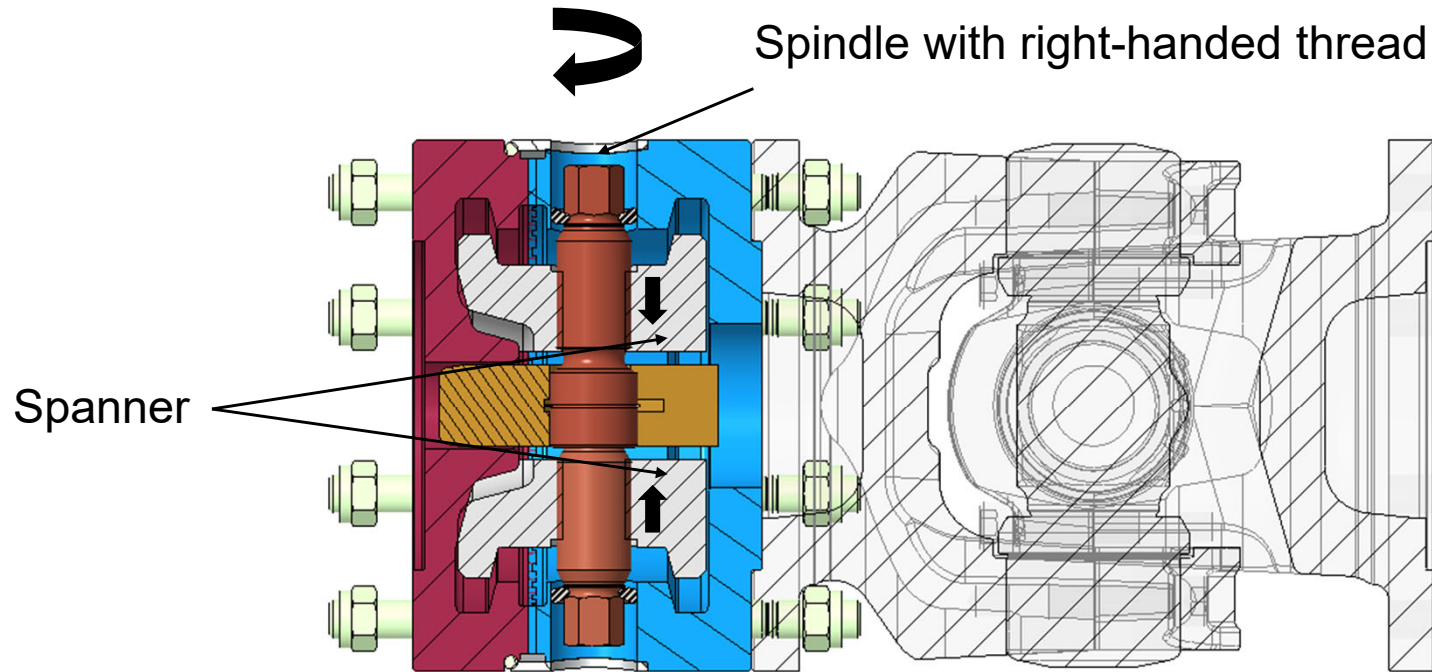
# Overview – Closed Quick Release Coupling



# Overview – Closed Quick Release Coupling



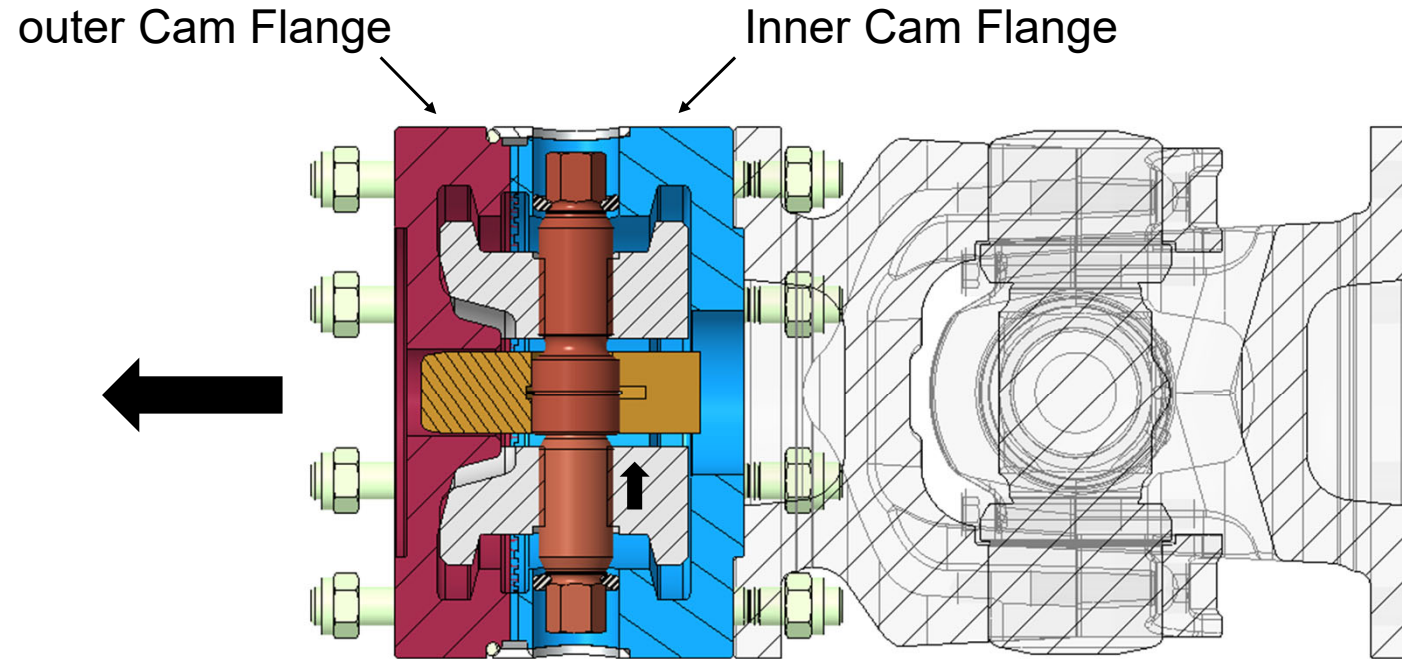
# Opening the Quick Release Coupling



## STEP 1

Turning the spindle with right-handed thread in anti-clockwise direction:  
Both spanner are moving synchronously towards each other

# Opening the Quick Release Coupling



## STEP 2

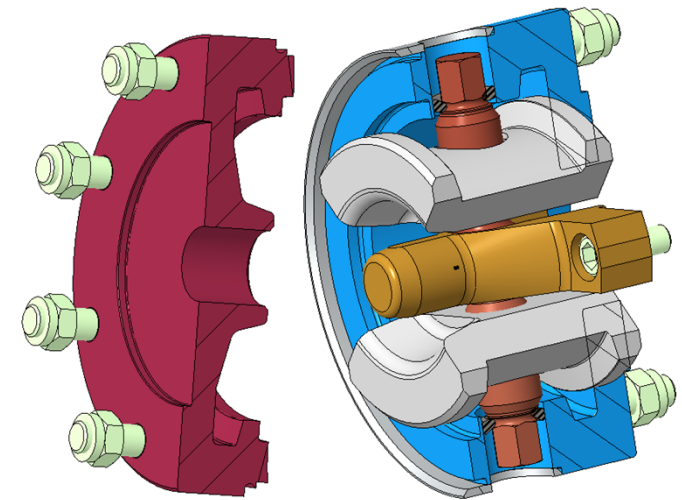
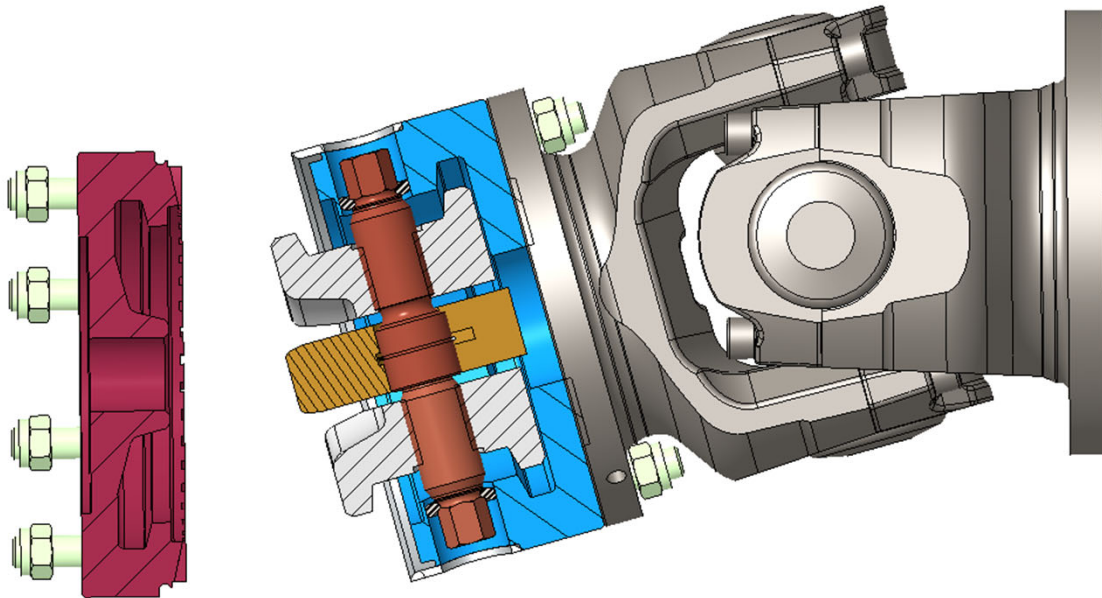
Now it is possible to separate the outer Cam Flange from inner Cam Flange

# Opening the Quick Release Coupling

## ATTENTION!

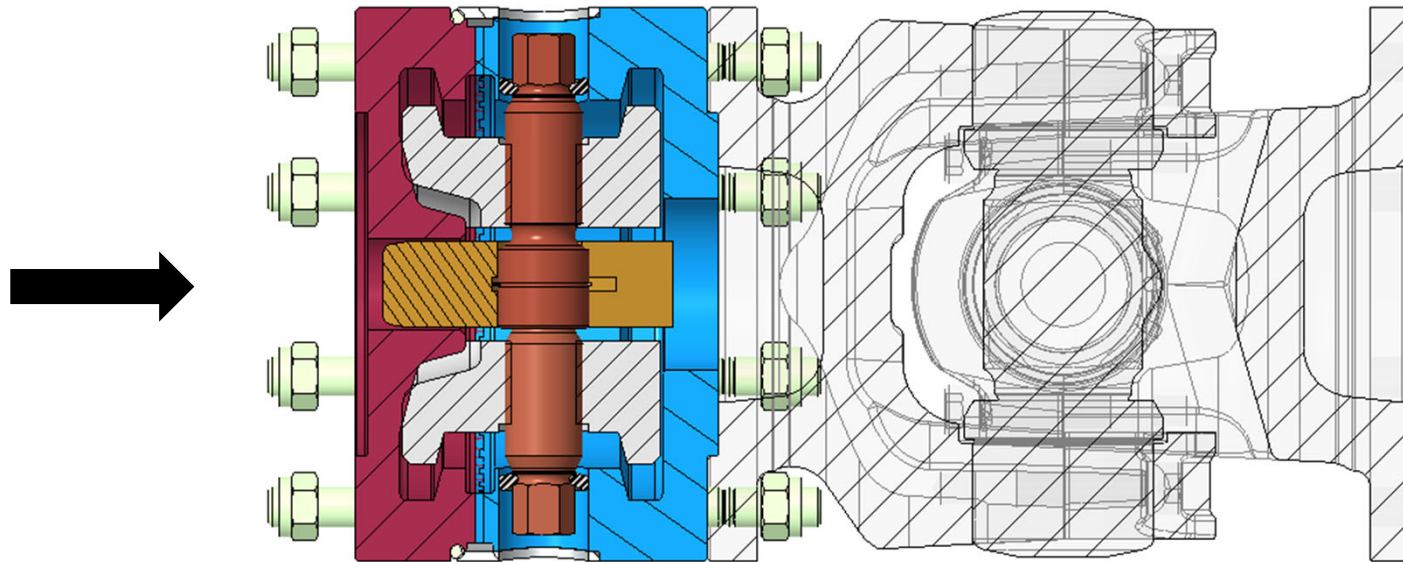
The Joint with the coupling component falls back when disengaged.

**Caution: Danger of injury!**



**All internal parts are fixed, nothing can fall out**

# Opening the Quick Release Coupling

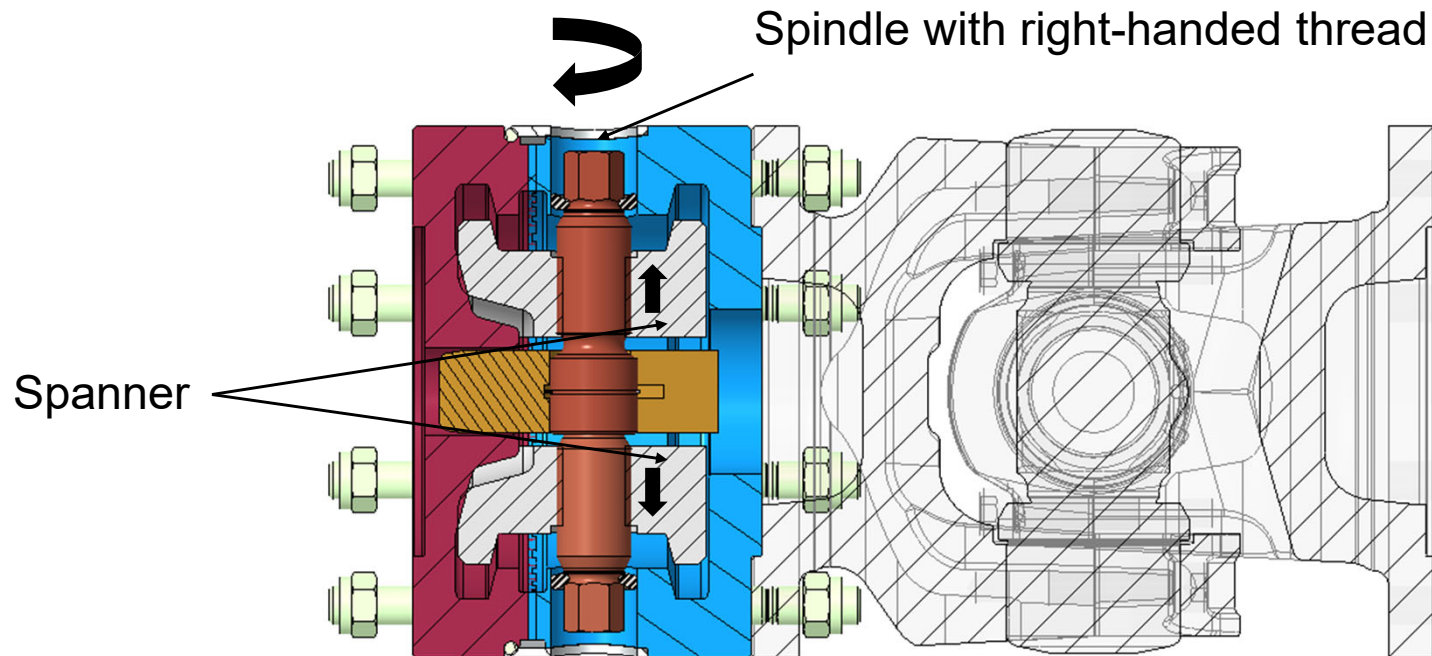


## STEP 1

Bring the outer Cam Flange in correct position.

Before engaging the coupling, make sure that the coupling teeth are properly fitted

# Opening the Quick Release Coupling



## STEP 1

Turning the spindle with right-handed thread in clockwise direction:  
Both spanner are moving synchronously away from each other.

Quick Release Coupling is closed now and ready for use





*People Finding A Better Way<sup>®</sup>*