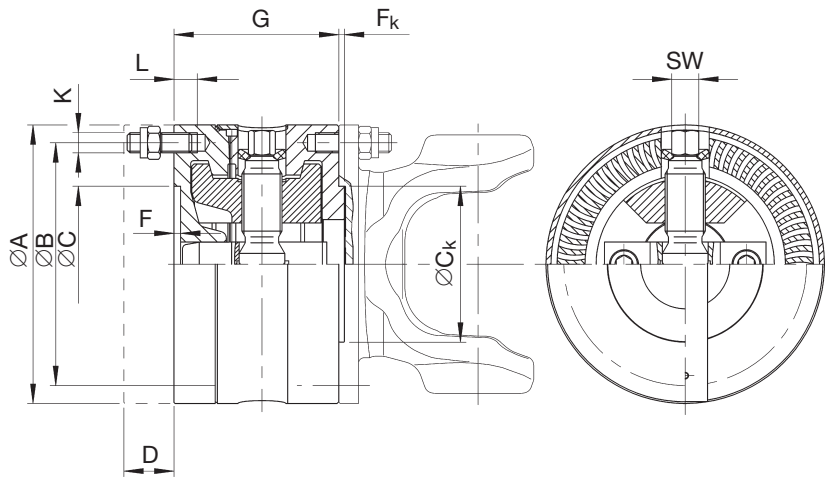


# Data sheet series 330 Quick release couplings

**Design** with spiral serration for higher speeds



Connection for series 687/688  
 Connection for series 587  
 Connection for series 392  
 with face key

For hole distribution, see data sheets of the corresponding driveshaft.

Coupling size			330.10	330.20	330.30	330.40	330.50			330.55		
Shaft connection			687/688.15	687/688.20	687/688.25 687/688.35	687/688.30 687/688.40	687/688.40 687/688.45	687/688.45 687/688.55 687/688.65	587.50	392.50	587.55	392.55
Model		Nr.	000	003	003	003		000		001	000	001
	A	mm	100	130	150	180		225		225	250	250
	B	mm	84	101,5	130	155,5		196		196	218	218
	C <sup>1)</sup>	mm	57	75	90	110		140		105	140	105
	C <sub>k</sub> <sup>11)</sup>	mm	57	75	90	110		140		105	140	105
	D <sup>2)</sup>	mm	20	38	40	40		45		45	45	45
	F	mm	2,5	2,5	3,5	4		5		5	6	6
	F <sub>k</sub>	mm	2,3-0,2	2,3-0,15	2,3-0,2	2,3-0,15		4-0,2		4-0,2	5-0,2	5-0,2
	G	mm	76	100	100	112		144		144	148	162
	j <sup>3)</sup>	-	6	8	8	8		8		8	8	8
	K <sup>4)</sup>	-	M 8 x 18	M 10 x 22	M 12 x 25	M 14 x 28		M 16 x 35		M 16 x 40	M 18 x 40	M 18 x 45
	L <sup>10)</sup>	mm	10	11	14	20		18		18	21	21
	G <sub>k</sub> <sup>12)</sup>	kg	4,7	7,5	10,6	16,4		34		36	40	49
Ta Nut		Nm	35	69	120	190		295		295	405	405
Extension <sup>5)</sup>		Nr.	2.365/13 M	2.365/17 M	2.365/19 M	22 M		24 R		24 R	27 R	27 R
Ta Spindle		Nm	30	45	80	100		190		190	220	220
Socket wrench <sup>6)</sup>		Nr.	1/2" D 19 SW 13		1/2" D 19 SW 17			1/2" D 19 SW 22				

## Operating instructions

### Engaging and disengaging the coupling

Engaging and disengaging are done by operating the threaded spindle located in the inner part of the coupling. The spindle can be reached from two sides and be operated. The spindle is tightened by means of a socket wrench (see table).

#### Notice:

1. Before engaging the coupling, make sure that the coupling teeth are properly fitted.

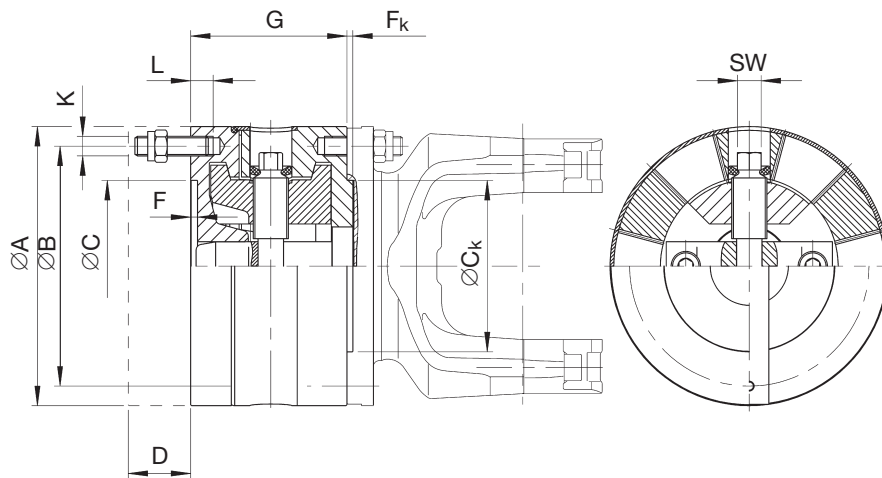
2. The engagement direction is marked by arrows. The spindle may be tightened either clockwise or counter-clockwise.

3. The joint with the coupling component falls back when disengaged. **Caution: Danger of injury!**

In case of a subsequent installation of the quick release coupling, the driveshaft must be correspondingly shorter. The threaded spindles of the coupling are lubricated by the supplier with MoS<sub>2</sub>. Relubrication is recommended from time to time.

# Data sheet series 230 Quick release couplings

**Design** with trapezoidal serration for speeds up to 1.000 rpm



Connection for series 390  
Connection for series 392/393  
with face key

For hole distribution, see data sheets of the corresponding driveshaft.

Coupling size			230.60		230.65		230.70		230.75		230.80	
Shaft connection			390.60	392.60	390.65	392.65	390.70	392.70	390.75	393.75	390.80	393.80
Model	Nr.		000	001	000	001	000	001	000	001	000	001
	A	mm	285	285	315	315	350	350	390	390	435	435
	B	mm	245	245	280	280	310	310	345	345	385	385
	C <sup>1)</sup>	mm	175	125	175	130	220	155	250	170	280	190
	C <sub>k</sub> <sup>11)</sup>	mm	175	125	175	130	220	155	250	170	280	190
	D <sup>2)</sup>	mm	64	64	66	66	72	72	82	82	92	92
	F	mm	7	7	7	8	8	8	8	8	10	10
	F <sub>k</sub>	mm	6-0,2	6-0,5	6-0,2	7-0,5	7-0,3	7-0,5	7-0,2	7-0,5	9-0,5	9-0,5
	G	mm	160	174	172	192	184	204	196	220	226	246
	I <sup>3)</sup>	-	8	8	8	10	10	10	10	10	10	16
	K <sup>4)</sup>	-	M 20 x 45	M 20 x 55	M 22 x 50	M 22 x 60	M 22 x 50	M 22 x 60	M 24 x 55	M 24 x 70	M 27 x 65	M 27 x 75
	L <sup>10)</sup>	mm	23	23	25	25	25	25	27	27	30	30
	G <sub>k</sub> <sup>12)</sup>	kg	66	71	83	95	110	120	143	150	210	230
Ta Nut	Nm		580	580	780	780	780	780	1.000	1.000	1.500	1.500
Extension <sup>5)</sup>	Nr.		30 R	30 R	32 R	32 R	32 R	32 R	36 R	36 R	41 R	41 R
Ta Spindle	Nm		290	290	400	400	550	550	680	680	950 <sup>9)</sup>	950 <sup>9)</sup>
Socket wrench <sup>6)</sup>	Nr.		3/4" D 32 SW 22		3/4" D 32 SW 27		3/4" D 32 SW 27		3/4" D 32 SW 32		3/4" D 32 SW 36	
X = 4 spanners <sup>8)</sup>	Nr.										TD 750	

- Spigot fit H7
- Disengaging movement for separation of the coupling
- Number of stud bolts per flange
- Dimensions of the bolt connections  
Stud bolt DIN 938  
Self-locking hexagon nut DIN 980
- Jaw or ring extension in accordance with Dana standard N 4.2.5
- Gedore socket spanner set for tightening the spindle
- Rahsol torque meter
- Force multiplier spanner x = 4 (TD 750)
- Adjusting moment of the torque wrench 756 C = 238 Nm
- Thread depth
- Fit h6 up to series 390  
Fit f8 for series 392/393
- G<sub>k</sub> = Weight of coupling
- Ta = Tightening torques of flange boltings and of the threaded coupling spindles

Torque wrench <sup>7)</sup>	Torque range	
	from	to
756 B	20 Nm	100 Nm
756 C	80 Nm	300 Nm
756 D	280 Nm	760 Nm

For applications with speeds higher than 1.000 rpm, please contact Dana engineers. Other designs available on request.