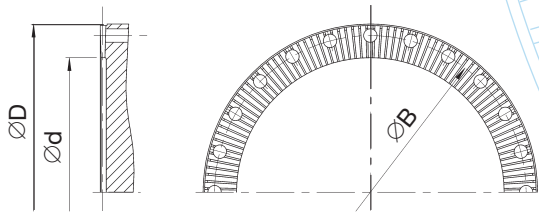


Data sheet Flange connection with serration

Hirth-serration

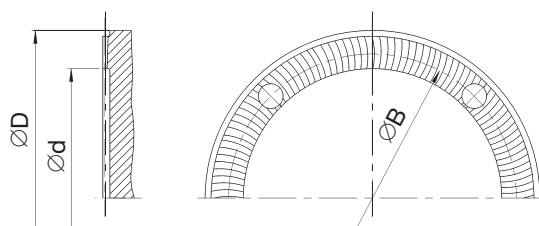
- Flank angle 40°
- High transmission capacity
- Form locking
- Self-centering



D mm	d mm	z	B mm	i*
225	180	48	200	8 x M 12
250	200	48	225	8 x M 14
285	225	60	255	10 x M 14
315	250	60	280	10 x M 16
350	280	72	315	12 x M 16
390	315	72	350	12 x M 18
435	345	96	395	16 x M 18
480	370	96	445	16 x M 20
550	440	96	510	16 x M 22
600	480	120	555	20 x M 24
650	520	120	605	20 x M 24
700	570	120	655	24 x M 24
750	600	144	695	24 x M 30
800	650	144	745	24 x M 30
850	680	144	785	24 x M 36
900	710	144	835	24 x M 36
950	760	144	885	24 x M 36
1.000	800	180	925	20 x M 42 x 3
1.050	840	180	975	20 x M 42 x 3
1.100	880	180	1.025	20 x M 42 x 3
1.150	925	180	1.065	20 x M 48 x 3
1.200	960	180	1.115	20 x M 48 x 3

Klingenberg-serration

- Flank angle 25°
- High transmission capacity
- Form locking
- Self-centering



D mm	d mm	z	B mm	i
95	65	16	84	4 x M 8
115	80	24	101,5	4 x M 10
145	110	24	130	4 x M 12
175	140	32	155,5	4 x M 16
215	175	48	196	4 x M 16
240	195	48	218	4 x M 18
275	220	48	245	4 x M 20
305	245	48	280	4 x M 20
340	280	72	310	4 x M 22
380	315	72	345	6 x M 24
425	355	96	385	6 x M 27
465	390	96	425	8 x M 30
535	455	96	492	8 x M 30

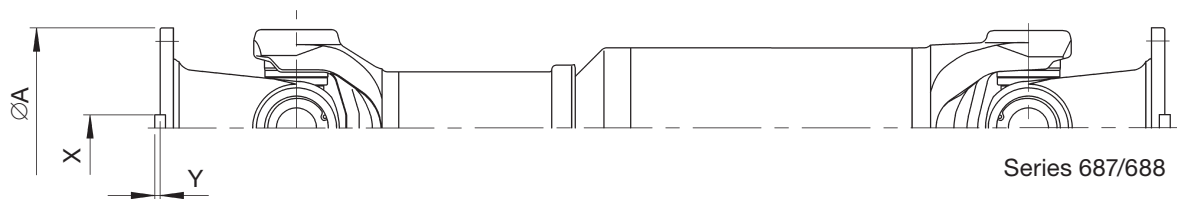
D = Outside diameter
d = Inside diameter
Z = Number of teeth
B = Pitch diameter
i = Number and size of bolts
Bolt material: 10.9

* Reduced number of bolts by special arrangement only (e.g., for use as quick-change system)

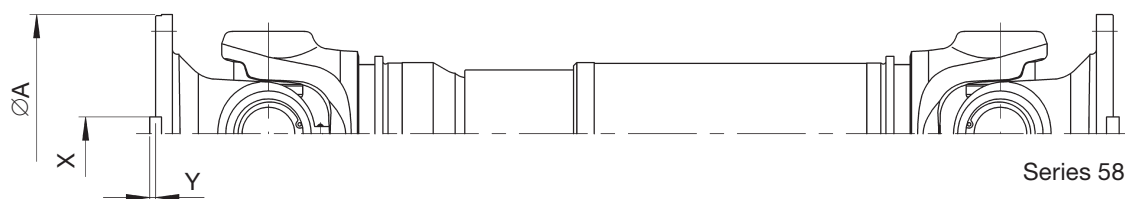
Other diameters available on request.

Data sheet Face key connection series 687/688/587/390

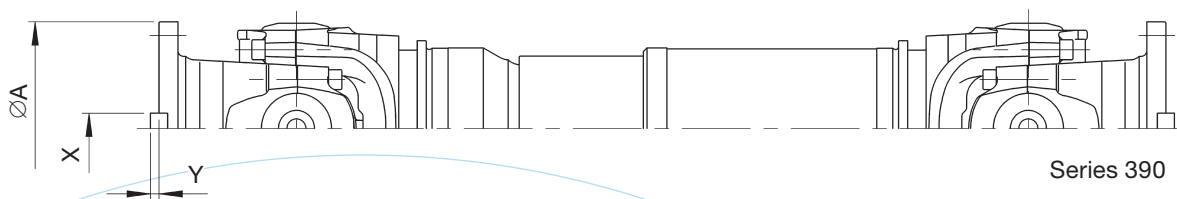
The driveshaft for series 687/688/587/390 can also be manufactured with face key connection on request.



Series 687/688

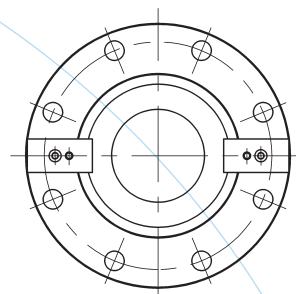


Series 587



Series 390

Driveshaft connection				
Shaft size	$\varnothing A$ mm	$(I^2) \times H^1)$	X e9 mm	Y mm
687/688.35	150	8 x 13	20	4,0
687/688.40				
687/688.45	180	8 x 15	25	4,5
687/688.55		10 x 17		
687/688.65		10 x 17		
587.50	225	8 x 17	32	5,5
587.55	250	8 x 19	40	7,0
587.60	285	8 x 21	45	8,0
390.60	285	8 x 21	45	8,0
390.65	315	8 x 23	45	8,0
390.70	350	10 x 23	50	9,0
390.75	390	10 x 25	50	9,0
390.80	435	10 x 28	63	12,0



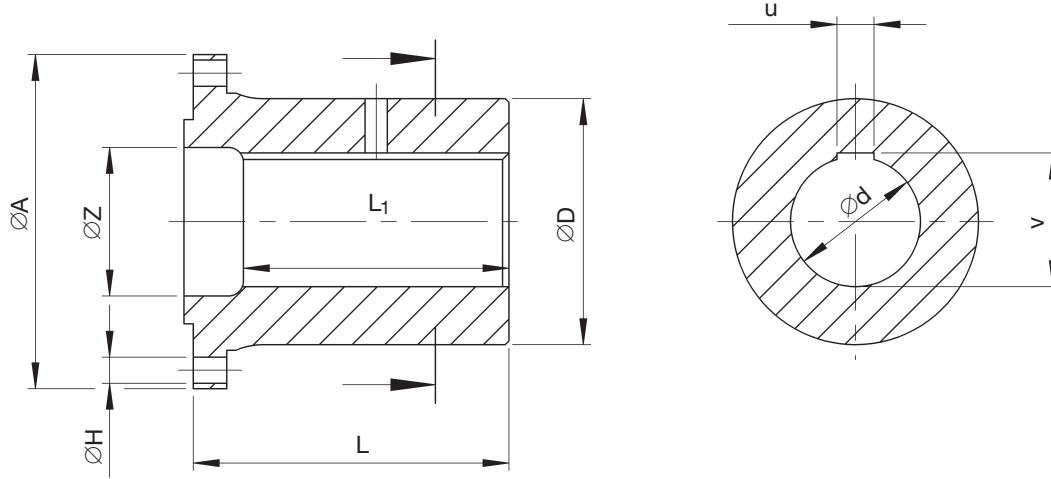
1. Tolerance + 0,2 mm
(for 390.75 and 390.80,
tolerance + 0,5 mm)

2. Number of flange holes

Data sheet standard companion flanges

Standard companion flanges can be manufactured with cylindrical bore holes and face keyway (material C45; hardened and tempered 750 – 900 N/mm²) on request. For designs

deviating from the standard, e.g., oil pressure connection, conical bore, flat journal, and material, relevant drawings are required.



Please state with your order:

- Shaft size = _____
- Flange dia. A = _____ mm
- I x H = __ number of holes x Ø __ mm
- L = _____ mm
- L₁ = _____ mm
- Z = _____ mm
- D = _____ mm
- d = _____ mm
- u = _____ mm
- v = _____ mm

Driveshaft connection			Dimension
Shaft size	Ø A mm	I ² x H ¹)	Ø D _{max} mm
687/688.15 687/688.20	100	6 x 8,25	69,5
687/688.15 687/688.20 687/688.25 687/688.30	120	8 x 10,25	84
687/688.25 687/688.30	150	8 x 12,25	110,3
687/688.35		8 x 12,25	
687/688.40		8 x 12,1	
687/688.35 687/688.40 687/688.45	180	8 x 14,1	132,5
687/688.55 687/688.65	225	10 x 16,1	171
687/688.45		8 x 16,1	
687/688.55 687/688.65	250	8 x 18,1	189
587.50 587.55	285	8 x 20,1	213
587.60			
390.60 390.65	315	8 x 22,1	247
390.70	350	10 x 22,1	277
390.75	390	10 x 24,1	308
390.80	435	10 x 27,1	342

1. Tolerance + 0,2 mm
(for 390.75 and 390.80,
tolerance + 0,5 mm)

2. Number of flange holes