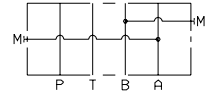
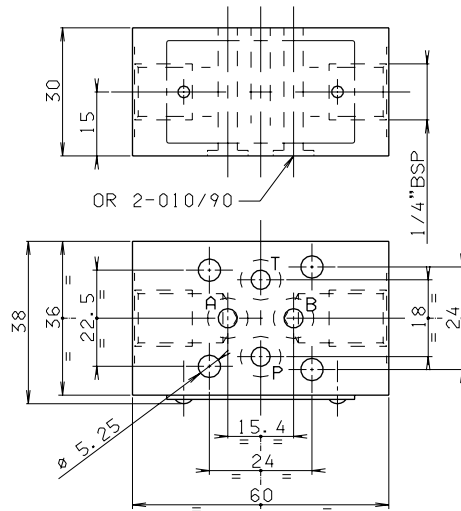


BC2... BASI COMPONENTI CETOP 2/NG04

BC250AB MODULO INTERMEDIO PER ATTACCO MANOMETRO (BOCCHIE A/B)

- BC** Base componibile
- 2** CETOP 2/NG04
- 50** Modulo intermedio per attacco manometro
- AB** Controllo sulle vie A e B
- 00** Nessuna variante
- 1** N° di serie

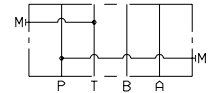
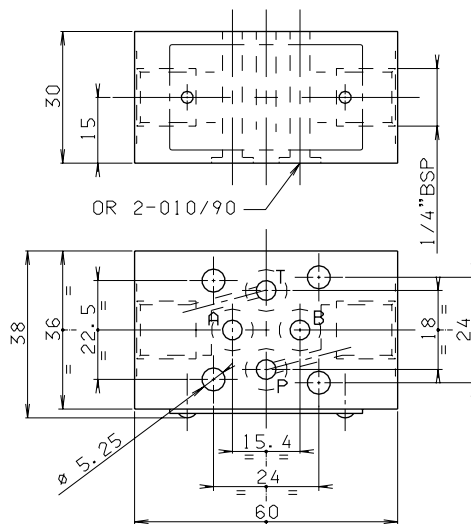
Peso: 0,4 Kg



BC250PT MODULO INTERMEDIO PER ATTACCO MANOMETRO (BOCCHIE P/T)

- BC** Base componibile
- 2** CETOP 2/NG04
- 50** Modulo intermedio per attacco manometro
- PT** Controllo sulle vie P e T
- 00** Nessuna variante
- 1** N° di serie

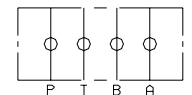
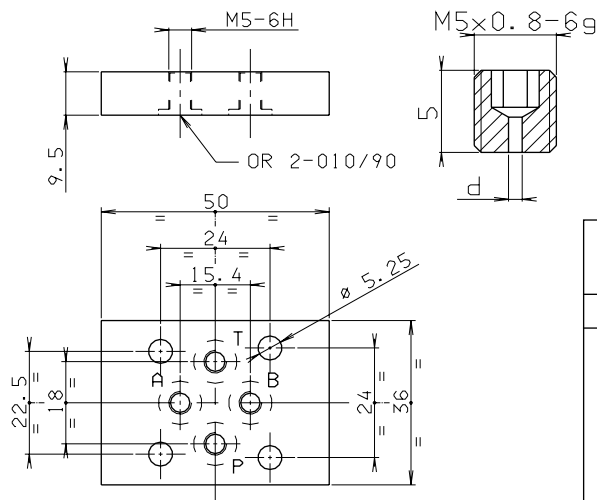
Peso: 0,4 Kg



BC251 BASE PORTA GRANI PER ELETTROVALVOLA

- BC** Base componibile
- 2** CETOP 2/NG04
- 51** Porta grani per elettrovalvola
- 00** Nessuna variante
- 1** N° di serie

Peso: 0,05 Kg



GRANI CON FORI CALIBRATI DISPONIBILI

| d | M5x0.8x5 |
|-----|-------------|
| 0.5 | M89.10.0044 |
| 0.6 | M89.10.0045 |
| 0.7 | M89.10.0046 |
| 0.8 | M89.10.0015 |
| 0.9 | M89.10.0047 |
| 1 | M89.10.0048 |
| 1.2 | M89.10.0049 |