

# BM3... BASI MULTIPLE CETOP 3/NG06

## BM3... COLLEGAMENTI IN SERIE O IN PARALLELO

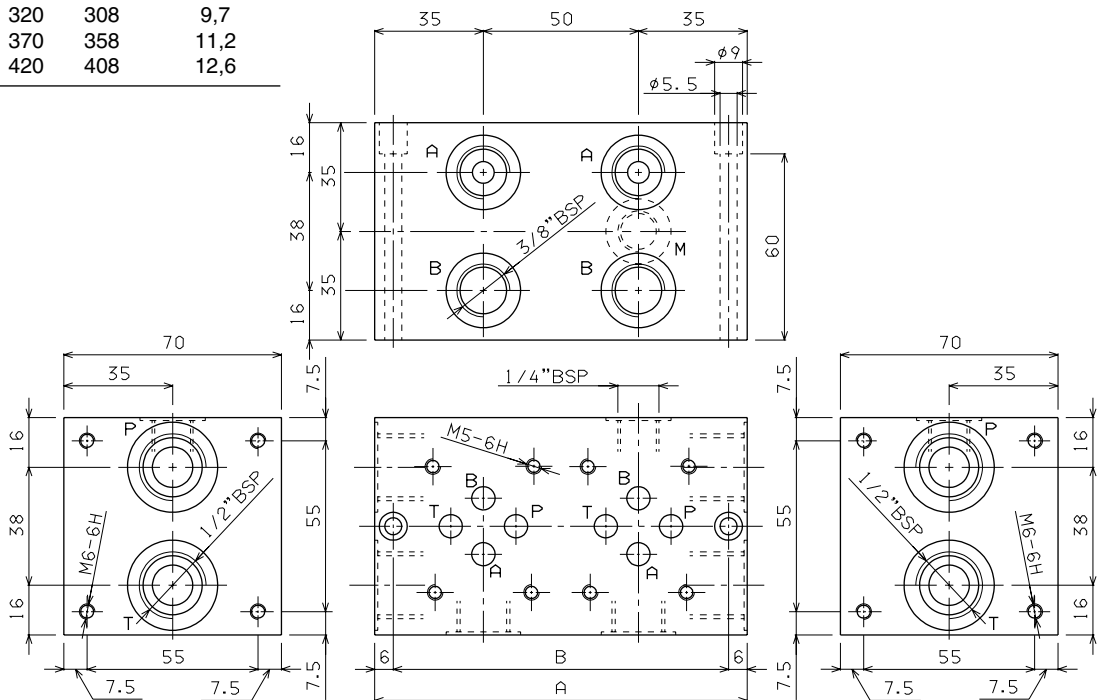
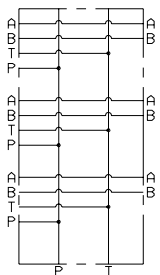
- BM** Base multipla (versioni standard in ghisa)
- 3** CETOP 3/NG06
- \*\***
  - 50** = Collegamento in parallelo con valvola di max. e attacchi posteriori
  - 70** = Collegamento in parallelo con valvola di max. e attacchi laterali
  - 52** = Collegamento in serie con valvola di max. e attacchi posteriori
  - 72** = Collegamento in serie con valvola di max. e attacchi laterali
  - 60** = Collegamento in parallelo senza valvola di max. e attacchi laterali
- \*** Numero posti valvola:  
**2 / 3 / 4 / 5 / 6 / 7 / 8**
- \*** Regolazione (omettere per versione BM360...)  
**M** = Pomolo in plastica  
**C** = vite con esagono interno
- \*** Campo di taratura (omettere per versione BM360...)  
**1** = max. 50 bar (**colore bianco**)  
**2** = max. 150 bar (**colore giallo**)  
**3** = max. 320 bar (**colore verde**)
- \*\*** **00** = Nessuna variante  
**AL** = Versione in alluminio (pressione massima consigliata 230 bar)
- 1** N° di serie

• La minima pressione di taratura consentita è in funzione della molla:  
vedi valvola a cartuccia CMP10... (Capitolo Cap. VII • 30 )

7

## BM360 COLLEGAMENTO IN PARALLELO SENZA VALVOLA DI MASSIMA

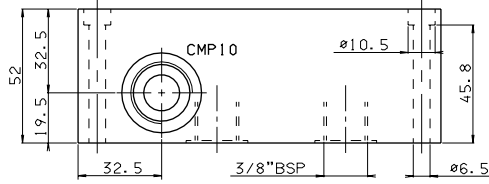
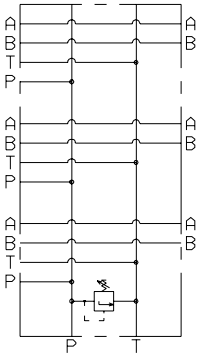
Tipo	A	B	Peso (Kg)
BM360/2	120	108	3,6
BM360/3	170	158	5,1
BM360/4	220	208	6,7
BM360/5	270	258	8,2
BM360/6	320	308	9,7
BM360/7	370	358	11,2
BM360/8	420	408	12,6



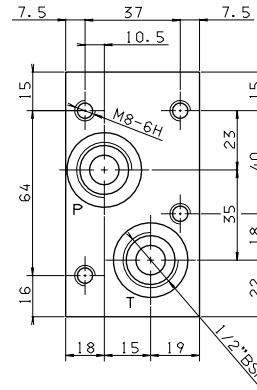
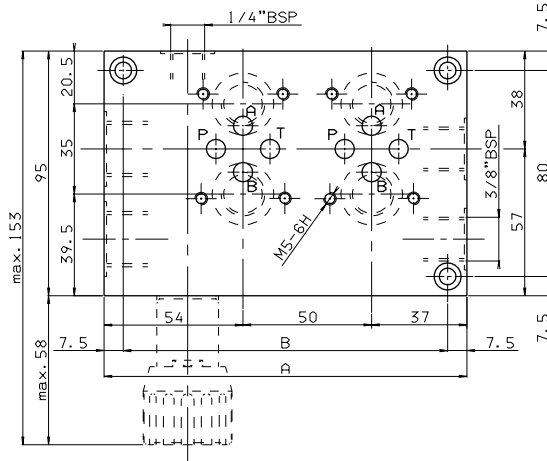
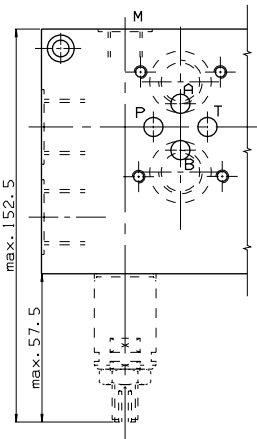
Viti di fissaggio previste M5x70 UNI 5931

# BM3... BASI MULTIPLE CETOP 3/NG06

## BM350 COLLEGAMENTO IN PARALLELO CON VALVOLA DI MASSIMA - ATTACCHI POSTERIORI

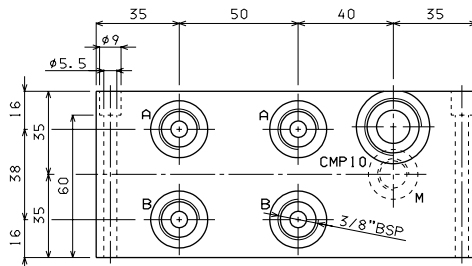
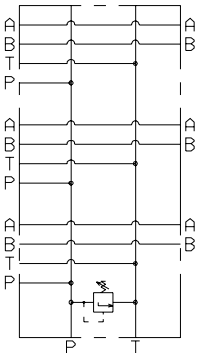


Tipo	A	B	Peso (Kg)
BM350/2	141	126	4,6
BM350/3	191	176	6,1
BM350/4	241	226	7,6
BM350/5	291	276	9,1
BM350/6	341	326	10,6
BM350/7	391	376	12,1
BM350/8	441	426	13,6

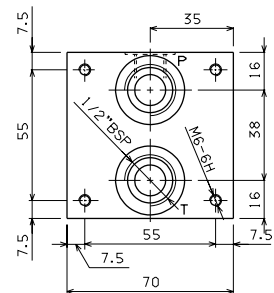
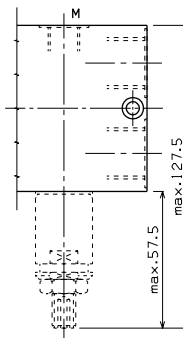
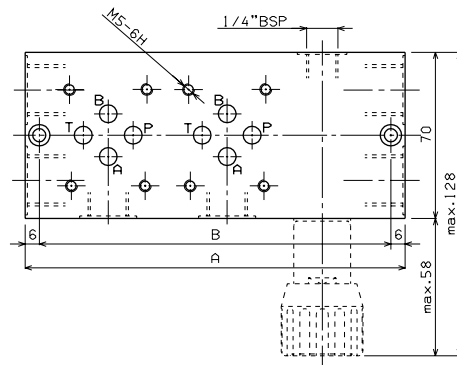
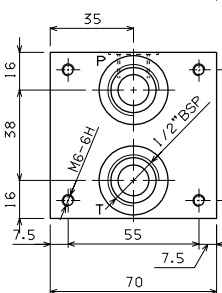


Viti di fissaggio previste M6x55 UNI 5931

## BM370 COLLEGAMENTO IN PARALLELO CON VALVOLA DI MASSIMA - ATTACCHI LATERALI



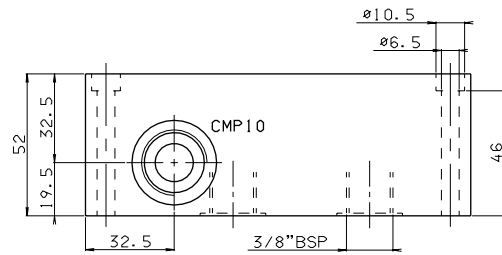
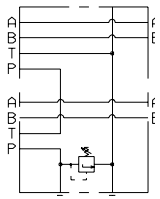
Tipo	A	B	Peso (Kg)
BM370/2	160	148	4,9
BM370/3	210	198	6,4
BM370/4	260	248	7,9
BM370/5	310	298	9,4
BM370/6	360	348	10,9
BM370/7	410	398	12,4
BM370/8	460	448	13,9



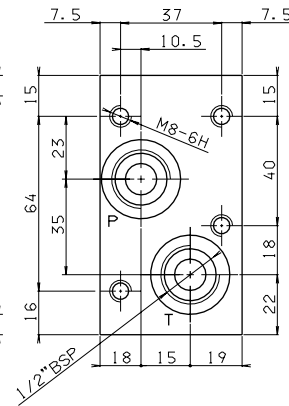
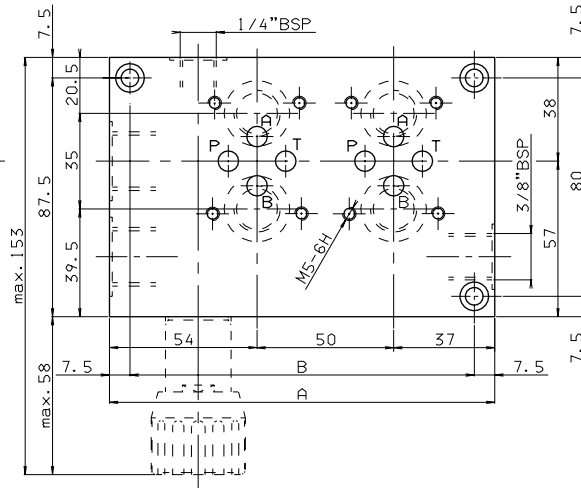
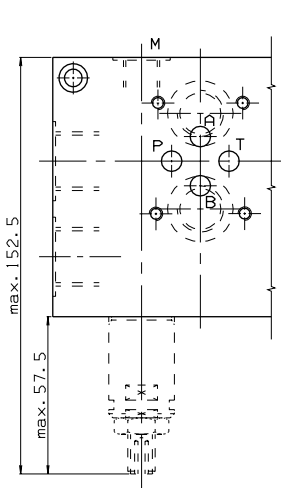
Viti di fissaggio previste M5x70 UNI 5931

# BM3... BASI MULTIPLE CETOP 3/NG06

## BM352 COLLEGAMENTO IN SERIE CON VALVOLA DI MASSIMA - ATTACCHI POSTERIORI



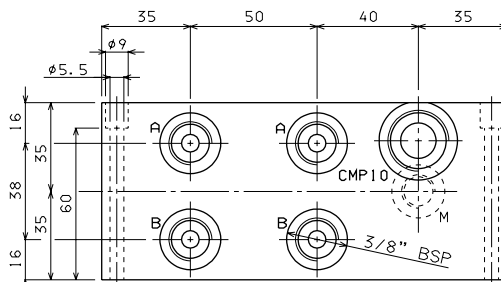
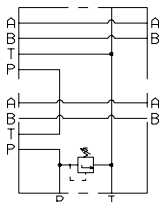
Tipo	A	B	Peso (Kg)
BM352/2	141	126	4,6
BM352/3	191	176	6,3
BM352/4	241	226	7,6
BM352/5	291	276	9,2
BM352/6	341	326	10,7
BM352/7	391	376	12,2
BM352/8	441	426	13,7



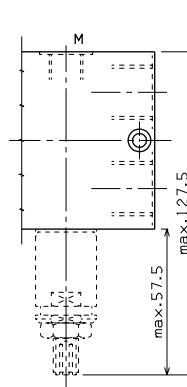
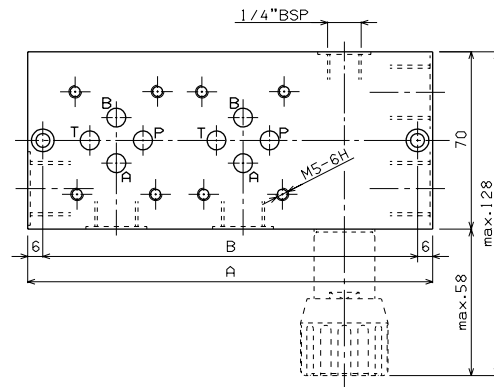
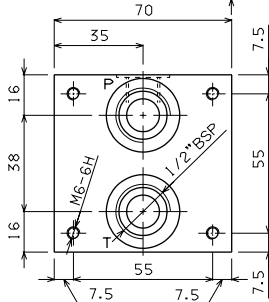
Viti di fissaggio previste M6x55 UNI 5931

7

## BM372 COLLEGAMENTO IN SERIE CON VALVOLA DI MASSIMA - ATTACCHI LATERALI



Tipo	A	B	Peso (Kg)
BM372/2	160	148	4,9
BM372/3	210	198	6,4
BM372/4	260	248	7,9
BM372/5	310	298	9,4
BM372/6	360	348	10,9
BM372/7	410	398	12,4
BM372/8	460	448	13,9



Viti di fissaggio previste M5x70 UNI 5931