

# BM5... BASI MULTIPLE CETOP 5/NG10

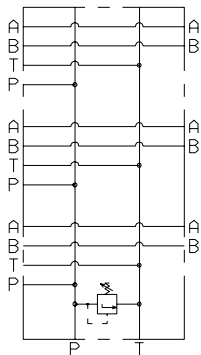
## BM5... COLLEGAMENTI IN PARALLELO

<b>BM</b>	Base multipla (versioni standard in ghisa)
<b>5</b>	CETOP 5/NG10
<b>**</b>	<b>50</b> = Collegamento in parallelo con valvola di max. e attacchi posteriori <b>60</b> = Collegamento in parallelo senza valvola di max. e attacchi laterali <b>70</b> = Collegamento in parallelo con valvola di max. attacchi P/T da 3/4" BSP - A/B laterali da 1/2" BSP <b>80</b> = Collegamento in parallelo con valvola di max. attacchi P/T da 1" BSP - A/B laterali da 3/4" BSP
<b>*</b>	Numero posti valvola (versione BM580 max. 6) <b>2 / 3 / 4 / 5 / 6 / 7 / 8</b>
<b>*</b>	Regolazione (omettere per BM560...) <b>M</b> = Pomolo in plastica <b>C</b> = Vite con esagono interno
<b>*</b>	Campo di taratura (omettere per BM560...) <b>1</b> = max. 50 bar ( <b>colore bianco</b> ) <b>2</b> = max. 140 bar ( <b>colore giallo</b> ) <b>3</b> = max. 350 bar ( <b>colore verde</b> )
<b>**</b>	<b>00</b> = Nessuna variante <b>AL</b> = Versione in alluminio (solo per BM560 e BM570), pressione massima consigliata 230 bar
<b>1</b>	N° di serie

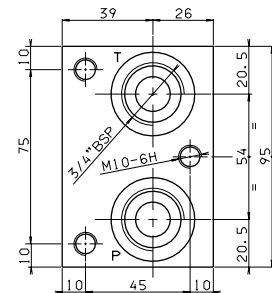
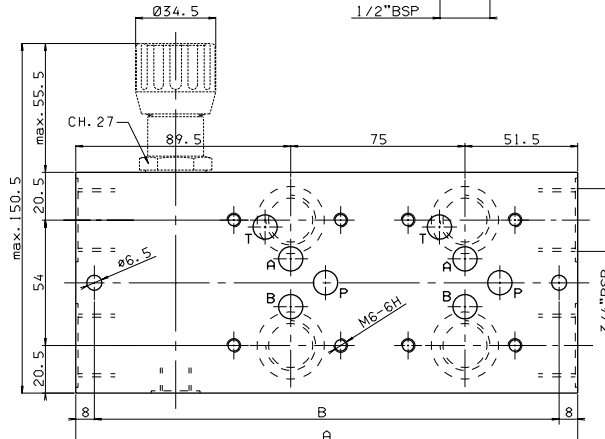
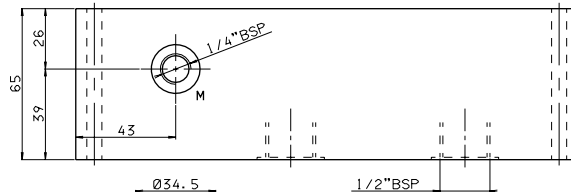
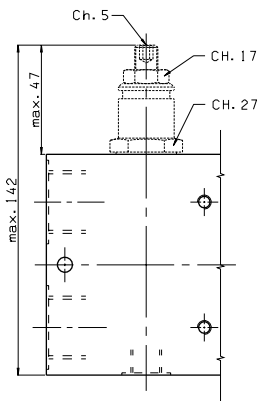
**• La minima pressione di taratura consentita è la stessa per tutte le molle: vedi valvola a cartuccia CMP30...**

## BM550 COLLEGAMENTO IN PARALLELO CON VALVOLA DI MASSIMA

7



Tipo	A	B	Peso (Kg)
BM550/2	216	200	8,5
BM550/3	291	275	11,3
BM550/4	366	350	14
BM550/5	441	425	16,8
BM550/6	516	500	19,5
BM550/7	591	575	22,3
BM550/8	666	650	25

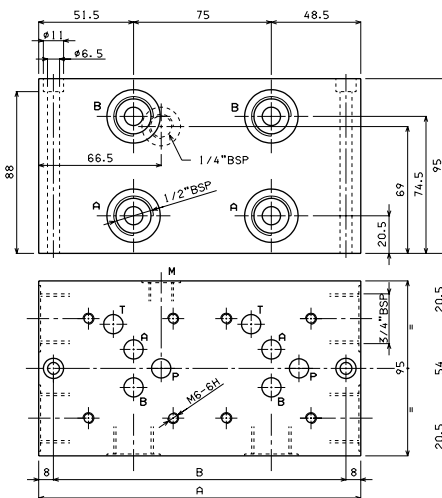
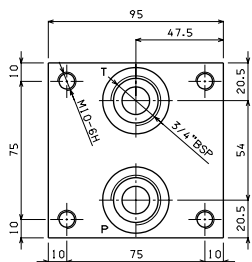


Viti di fissaggio previste M6x75 UNI 5931

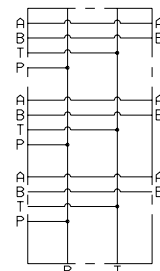
# BM5... BASI MULTIPLE CETOP 5/NG10

## BM560 COLLEGAMENTO IN PARALLELO SENZA VALVOLA DI MASSIMA

Tipo	A	B	Peso (Kg)
BM560/2	175	159	10
BM560/3	250	234	14,2
BM560/4	325	309	18,4
BM560/5	400	384	22,6
BM560/6	475	459	26,8
BM560/7	550	534	31
BM560/8	625	609	35,2

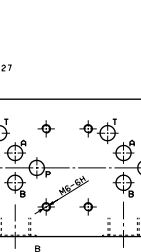
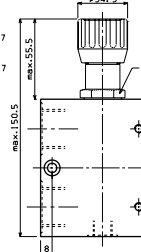
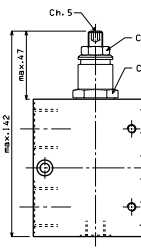
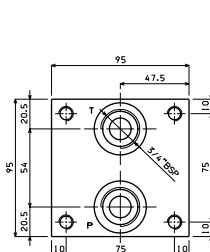


Viti di fissaggio previste M6x100 UNI 5931

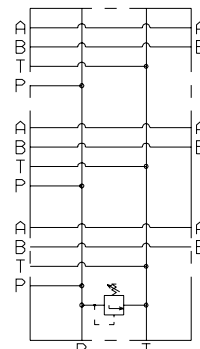


## BM570 COLLEGAMENTO IN PARALLELO CON VALVOLA DI MASSIMA

Tipo	A	B	Peso (Kg)
BM570/2	216	200	12,7
BM570/3	291	275	16,8
BM570/4	366	350	21
BM570/5	441	425	25,2
BM570/6	516	500	29,5
BM570/7	591	575	33,6
BM570/8	666	650	37,8

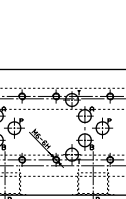
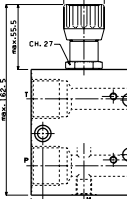
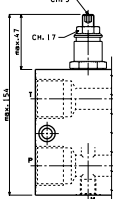
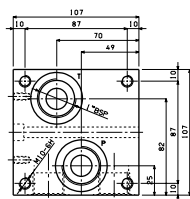


Viti di fissaggio previste M6x100 UNI 5931

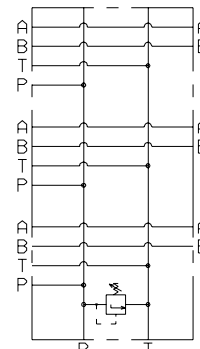


## BM580 COLLEGAMENTO IN PARALLELO CON VALVOLA DI MASSIMA

Tipo	A	B	Peso (Kg)
BM.5.80/2	225	205	19,5
BM.5.80/3	300	280	26
BM.5.80/4	375	355	32,5
BM.5.80/5	450	430	39
BM.5.80/6	525	505	45,5



Viti di fissaggio previste M8x110 UNI 5931



7