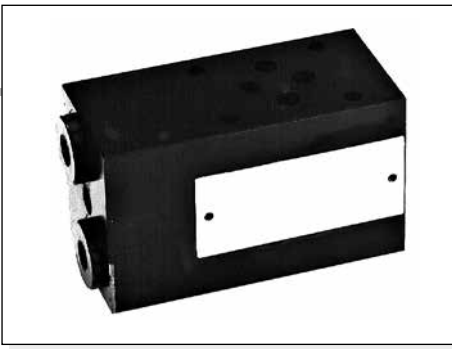


## AM3RGT... MODULAR VALVES FOR REGENERATIVE CIRCUIT CETOP 3



AM3RGT...

SCREWS AND STUDS

CAP. IV • 21

This modular valve produces a regenerative system to increase the actuator (differential cylinder) exit speed as shown in the diagram.

In particular, if a cylinder is used with a 2:1 ratio for the operating surfaces, the exit and re-entry speeds are the same.

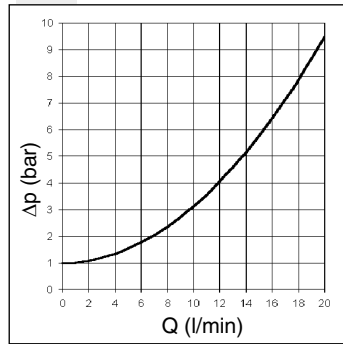
Max. operating pressure	350 bar
Max. flow at port A/B/P/T	20 l/min
Hydraulic fluids	Mineral oils DIN 51524
Fluid viscosity	10 ÷ 500 mm <sup>2</sup> /s
Fluid temperature	-25°C ÷ 75°C
Ambient temperature	-25°C ÷ 60°C
Max. contamination level	class 10 in accordance with NAS 1638 with filter $\beta_{25} \geq 75$
Weight	1,7 Kg

4

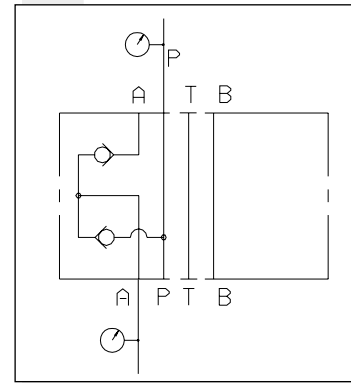
### ORDERING CODE

<b>AM</b>	Modular valve
<b>3</b>	CETOP 3/NG6
<b>RGT</b>	For regenerative circuit
<b>A</b>	Size of check valves 3/8" BSP
<b>1</b>	Opening pressure 1 bar
<b>**</b>	<b>00</b> = No variant <b>V1</b> = Viton
<b>1</b>	Serial No.

### PRESSURE DROPS A → P



### HYDRAULIC SYMBOL



### OVERALL DIMENSIONS

