

AM7UP... MODULAR PILOT OPERATED CHECK VALVES CETOP 7



AM.7.UP...

AM7UP type modular check valves allow free flow in one direction by lifting a seated poppet, while in the opposite direction the fluid can return by means of a small piston piloted by the other line pressure (piloted side).

The cast valve body allows limited pressure drops during the fluid flow through the various P/A/B/T lines.

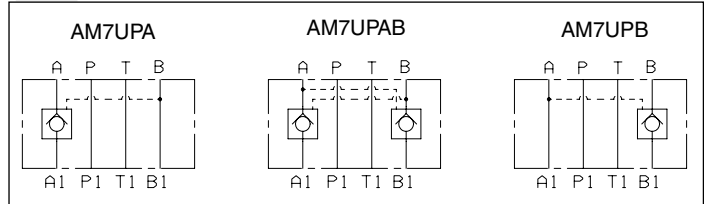
They are available on single A or B lines, and on double A and B lines (see hydraulic symbols).

Max. operating pressure	350 bar
Opening pressure	2 bar
Piloting ratio	1 : 11,7
Max. flow	250 l/min
Hydraulic fluids	Mineral oils DIN 51524
Fluid viscosity	10 ÷ 500 mm ² /s
Fluid temperature	-20°C ÷ 80°C
Ambient temperature	-20°C ÷ 50°C
Max. contamination level	class 10 in accordance with NAS 1638 with filter $\beta_{25} \geq 75$
Weight	7,2 Kg

ORDERING CODE

AM	Modular valve
7	CETOP 7/NG16
UP	Piloted check valve
**	Control on lines A / B / AB
2	Minimum opening pressure 2 bar
**	00 = No variant V1 = Viton
1	Serial No.

HYDRAULIC SYMBOLS



Curve 1 = A1→A
B1→B



Curve 2 = A→A1
B→B1

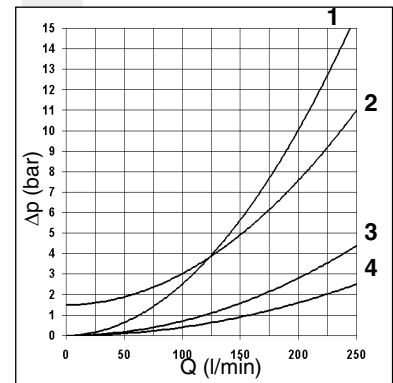


Curve 3 = A1→A (AM7UPB)
B1→B (AM7UPA)

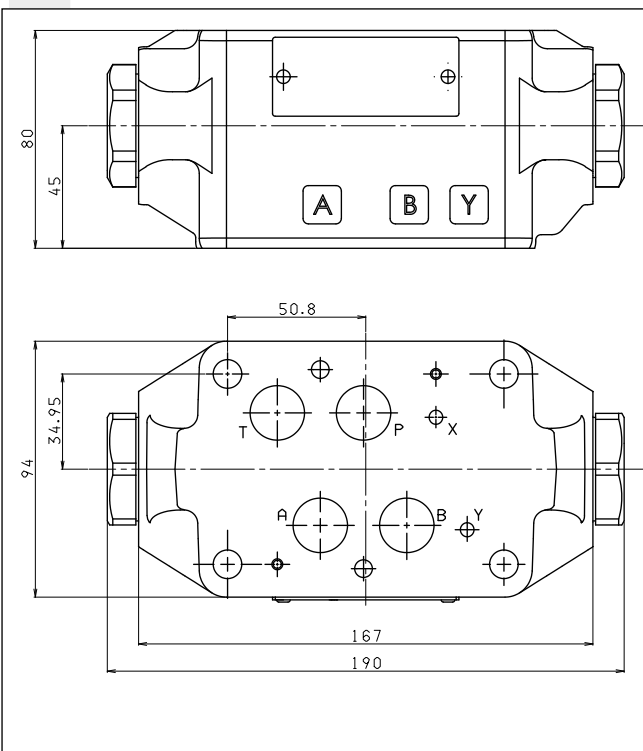
Curve 4 = P1→T
T1→P

The fluid used is a mineral oil with a viscosity of 46 mm²/s at 40°C. The tests have been carried out at a fluid temperature of 50°C.

PRESSURE DROPS ΔP-Q



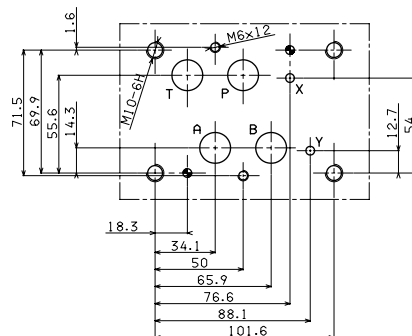
OVERALL DIMENSIONS



- Valve fixing:
n° 4 screws T.C.E.I. M10 - Tightening torque 40 Nm
n° 2 screws T.C.E.I. M6 - Tightening torque 8 Nm
The longer of the screws depends on the type of assembly used.
Fixing screws UNI 5931 with material specifications 12.9

- Seals:
n° 4 pieces OR 2-118/90SH PARKER (type 130)
n° 2 pieces OR 2-013/90SH PARKER (type 2043)

CETOP 7 (4.2-4-07) MOUNTING SURFACE



Support plane specifications

