



BA60... LOW / HIGH PRESSURE UNITS

The low/high pressure groups are usually employed in hydraulic systems fed by dual pumps that form a single pressure circuit.

The main feature of this system consists in being able to set a pressure value in correspondence of which one of the two pumping sections is changed over to drain.

Max. flow	60 l/min
Max. operating pressure	320 bar
Fluid viscosity	10 ÷ 500 mm ² /s
Fluid temperature	-25°C ÷ 75°C
Ambient temperature	-25°C ÷ 60°C
Max. contamination level	class 10 in accordance with NAS 1638 with filter $\beta_{25} \geq 75$
Weight	see "overall dimensions"

BA60...

BA06/10...	CAP. X • 3
CMP10...	CAP. VII • 30
BC0630/32... / BC0640...	CAP. VII • 15
BC530/32...	CAP. VII • 26
BC540...	CAP. VII • 25
CETOP 3/NG06	CAP. I • 5
CETOP 5/NG10	CAP. I • 33

These groups are fitted with an adjustable maximum pressure valve to protect the hydraulic system.

3 pressure adjustment ranges are available for the exclusion valve, which is fitted with cast iron or steel seat, while the maximum pressure valve type CMP10 is available with 3 adjustment ranges.

Minimum permissible setting pressure depending on the spring: see cartridge valve type CMP10.

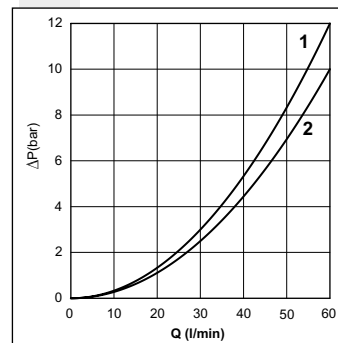
The series connection modular small block (BC0632/BC532) or the parallel connection type (BC0630/BC530) with blanking plate (BC0640/BC540) and the solenoid valve should be ordered separately.

For the subplate mounting ordering code see "Subplates" chapter; whilst for the valve ordering code see "Directional control valves" chapter.

The CETOP3/NG06 connector blocks have 2 rods, the CETOP5/NG10 have 3 rods.

BC1006 = reduction plate to be used only for assembly of modular blocks CETOP3/NG06.

PRESSURE DROPS

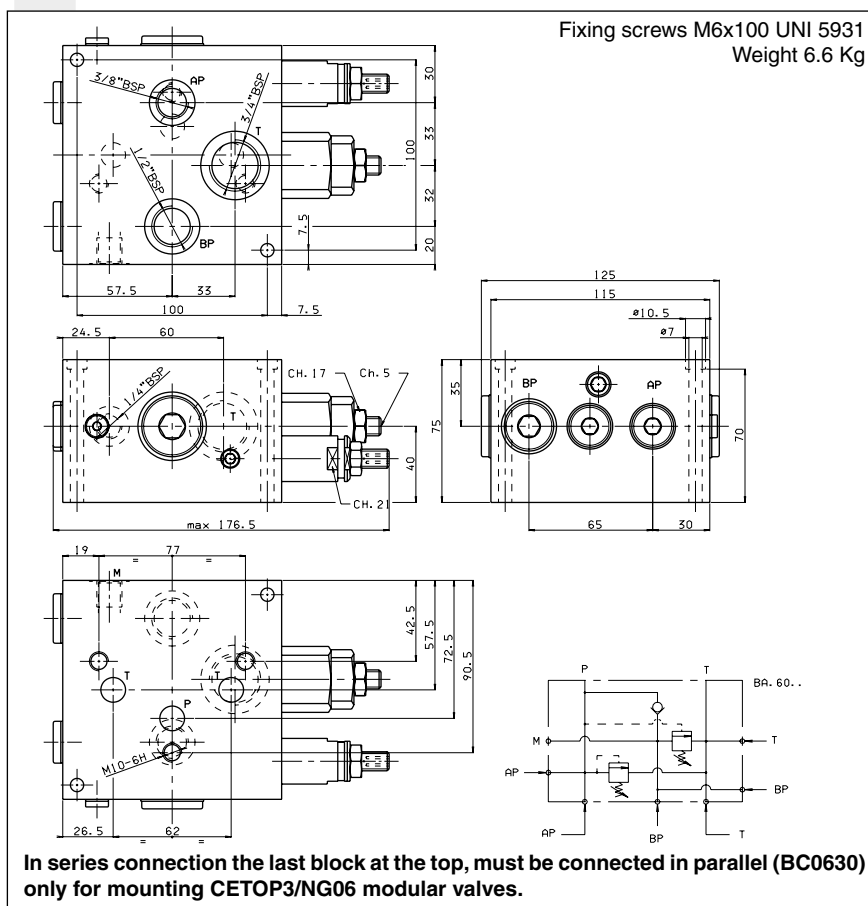


Curve	1 = BP → P 2 = BP → T
-------	--------------------------

ORDERING CODE

BA	Low/high pressure base
60	Capacity l/min
U*	TDouble pump exclusion valve setting 2 = max. 30 bar 3 = max. 75 bar 4 = max. 100 bar
C	Type of adjustment: grub screw
*	Max. pressure valve setting 1 = max. 50 bar 2 = max. 150 bar 3 = max. 320 bar
**	00 = No variant V1 = Viton
1	Serial No.

OVERALL DIMENSIONS AND HYDRAULIC SYMBOL



MODULE ORDERING CODE

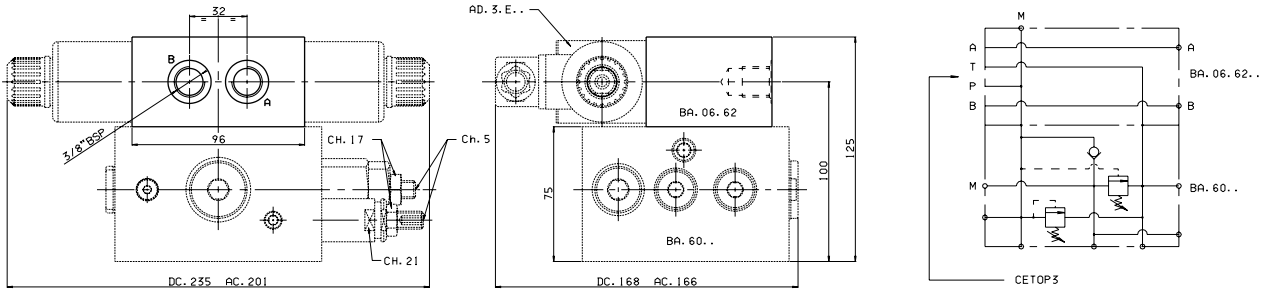
BA	Subplate mounting
**	06 = CETOP 3/NG06 10 = CETOP 5/NG10
**	Type of module: 62 = side CETOP interface 66 = top CETOP interface 68 = with upper threaded connectors (only for CETOP 5)
**	00 = No variant V1 = Viton
1	Serial No.

BA60... Low / HIGH PRESSURE UNITS

OVERALL DIMENSIONS AND HYDRAULIC SYMBOLS

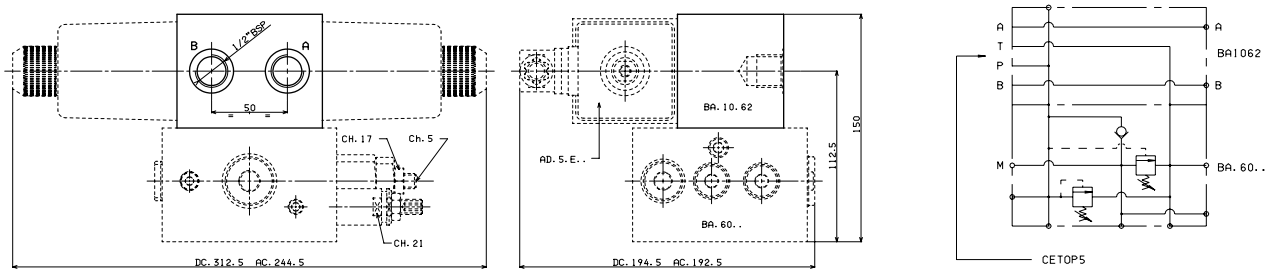
SIDE MOUNTING FOR SINGLE SOLENOID VALVE CETOP3/NG06 (CONNECTOR BLOCK BA.06.62)

Fixing screws M10x55 UNI 5931 - Weight 2 Kg



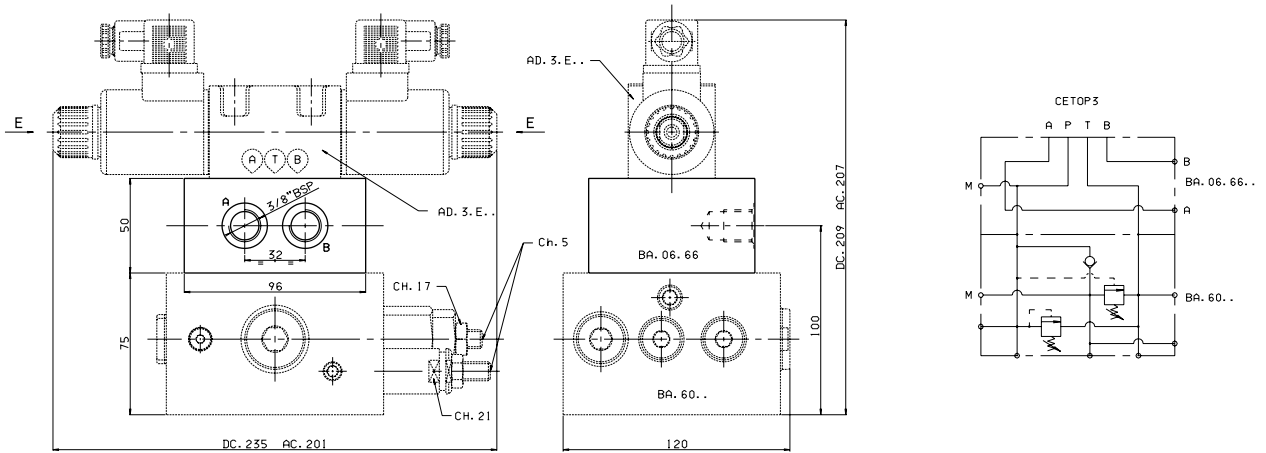
SIDE MOUNTING FOR SINGLE SOLENOID VALVE CETOP5/NG10 (CONNECTOR BLOCK BA.10.62)

Fixing screws M10x80 UNI 5931 - Weight 3 Kg



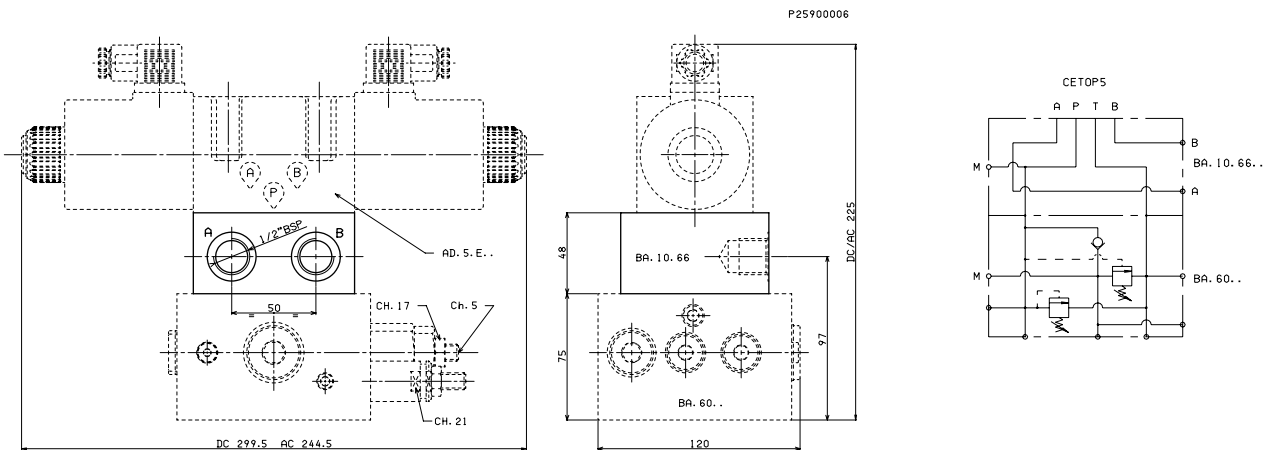
TOP MOUNTING FOR SINGLE SOLENOID VALVE CETOP3/NG06 (CONNECTOR BLOCK BA.06.66)

Fixing screws M10x50 UNI 5931 - Weight 2.5 Kg



TOP MOUNTING FOR SINGLE SOLENOID VALVE CETOP5/NG10 (CONNECTOR BLOCK BA.10.66)

Fixing screws M10x50 UNI 5931 - Weight 2.4 Kg



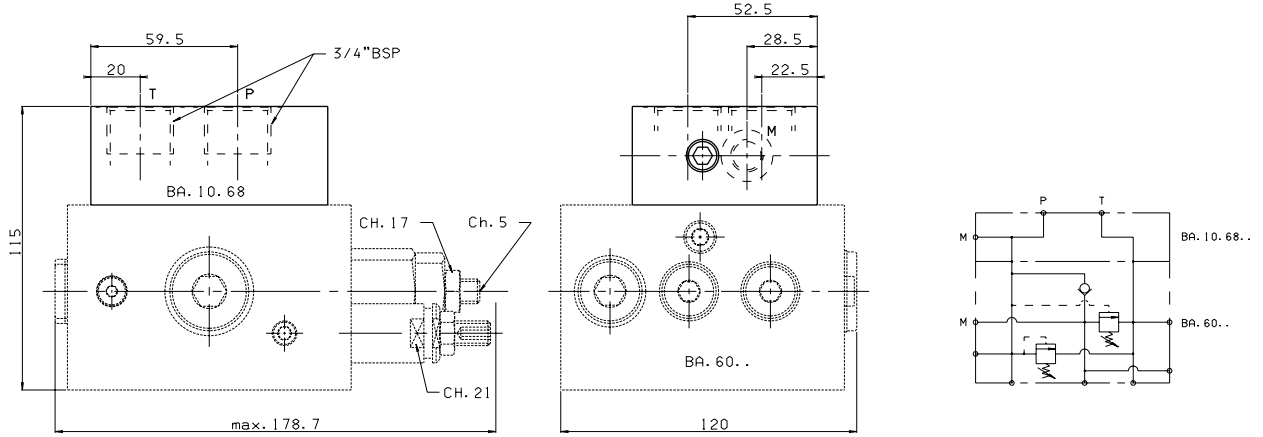
10

BA60... Low / HIGH PRESSURE UNITS

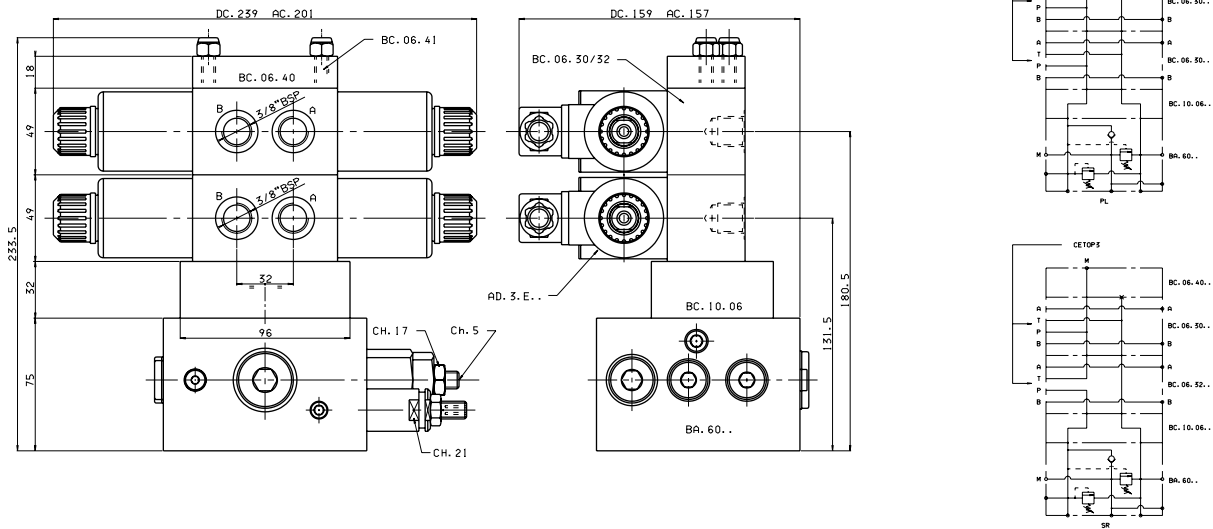
OVERALL DIMENSIONS AND HYDRAULIC SYMBOLS

MOUNTING WITH THREADED CONNECTORS (CONNECTOR BLOCK BA1068)

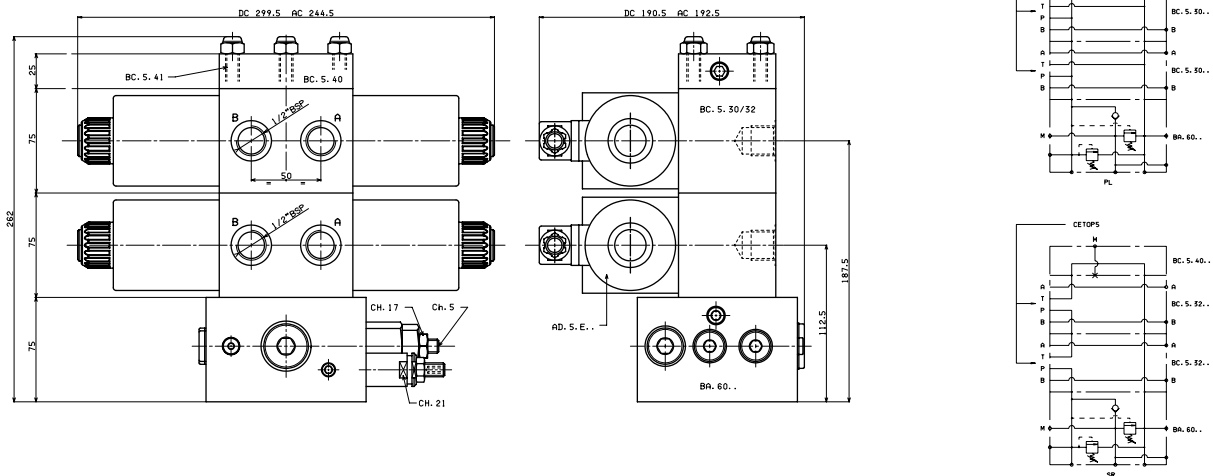
Fixing screws M10x45 UNI 5931- Weight 1.6 Kg



MULTIPLE MOUNTING WITH MODULAR COMPONENT CONNECTOR BLOCKS CONNECTED IN SERIES OR PARALLEL CETOP3/NG06



MULTIPLE MOUNTING WITH MODULAR COMPONENT CONNECTOR BLOCKS CONNECTED IN SERIES OR PARALLEL CETOP5/NG10



10