

BM5... MULTI STATION SUBPLATES

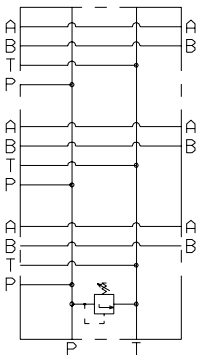
BM5...

- BM** Multi station subplate (standard versions are supplied in cast iron material)
- 5** CETOP 5/NG10
- ****
 - 50** = Connected in parallel with pressure relief valve and rear connectors
 - 60** = Connected in parallel without pressure relief valve and side connectors
 - 70** = Connected in parallel with pressure relief valve and 3/4" BSP P/T connectors and 1/2" BSP side A/B
 - 80** = Connected in parallel with pressure relief valve and 1" BSP P/T connectors and 3/4" BSP side A/B
- *** No. of valves seats (for BM580... max 6)
2 / 3 / 4 / 5 / 6 / 7 / 8
- *** Type of adjustment (omit for 60 version)
M = Plastic knob
C = Grub screw
- *** Setting range (omit for 60 version)
1 = max. 50 bar (**white spring**)
2 = max. 140 bar (**yellow spring**)
3 = max. 350 bar (**green spring**)
- **** **00** = No variant
AL = in aluminium material (only for BM560 and BM570 versions), recommended pressure max. 230 bar
- 1** Serial No.

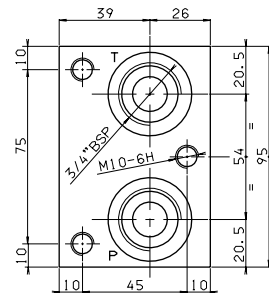
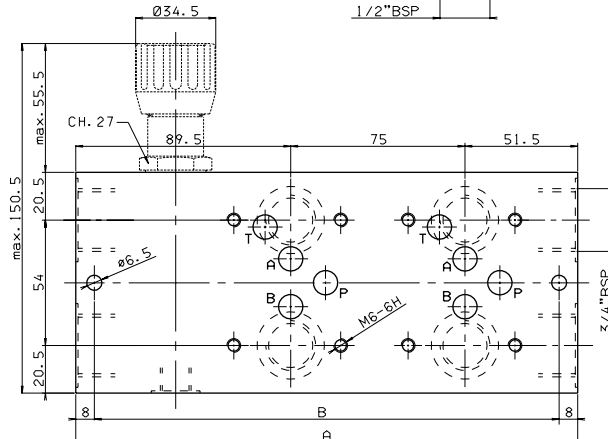
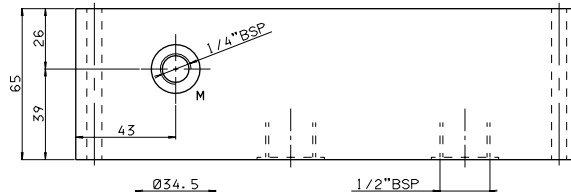
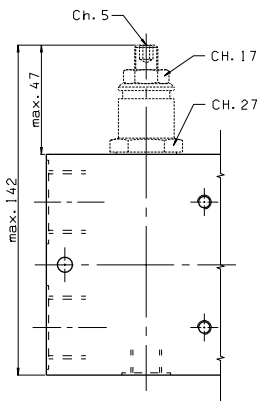
• The minimum permissible setting pressure is the same for all spring: see cartridge valve type CMP30...

BM550 CONNECTED IN PARALLEL WITH PRESSURE RELIEF VALVE

7



Type	A	B	Weight(Kg)
BM550/2	216	200	8,5
BM550/3	291	275	11,3
BM550/4	366	350	14
BM550/5	441	425	16,8
BM550/6	516	500	19,5
BM550/7	591	575	22,3
BM550/8	666	650	25

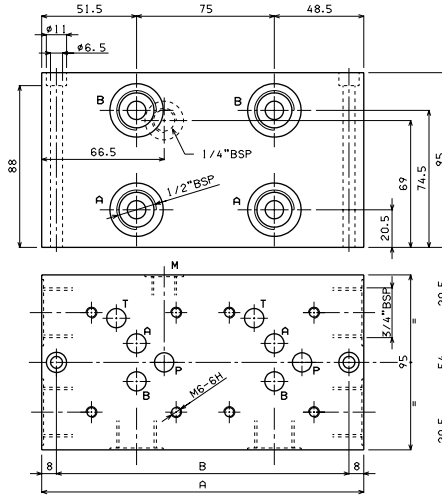
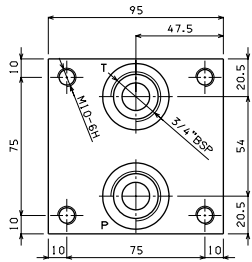


Fixing screws M6x75 UNI 5931

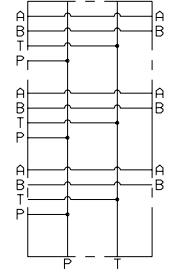
BM5... MULTI STATION SUBPLATES

BM560 CONNECTED IN PARALLEL WITHOUT PRESSURE RELIEF VALVE

Type	A	B	Weight(Kg)
BM560/2	175	159	10
BM560/3	250	234	14,2
BM560/4	325	309	18,4
BM560/5	400	384	22,6
BM560/6	475	459	26,8
BM560/7	550	534	31
BM560/8	625	609	35,2

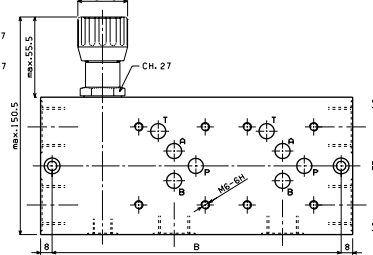
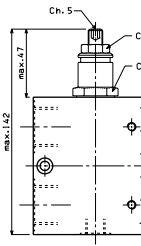
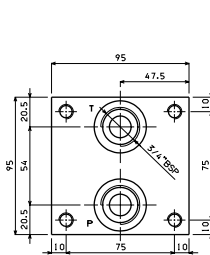


Fixing screws M6x100 UNI 5931

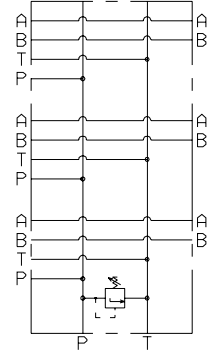


BM570 CONNECTED IN PARALLEL WITH PRESSURE RELIEF VALVE

Type	A	B	Weight(Kg)
BM570/2	216	200	12,7
BM570/3	291	275	16,8
BM570/4	366	350	21
BM570/5	441	425	25,2
BM570/6	516	500	29,5
BM570/7	591	575	33,6
BM570/8	666	650	37,8

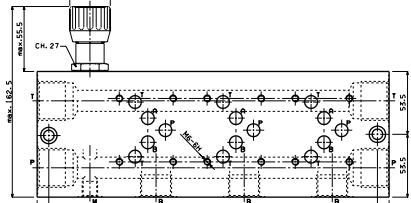
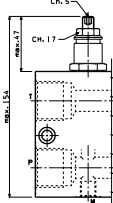
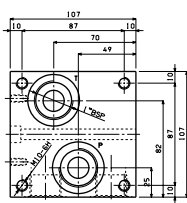


Fixing screws M6x100 UNI 5931



BM580 CONNECTED IN PARALLEL WITH PRESSURE RELIEF VALVE

Type	A	B	Weight(Kg)
BM.5.80/2	225	205	19,5
BM.5.80/3	300	280	26
BM.5.80/4	375	355	32,5
BM.5.80/5	450	430	39
BM.5.80/6	525	505	45,5



Fixing screws M8x110 UNI 5931

