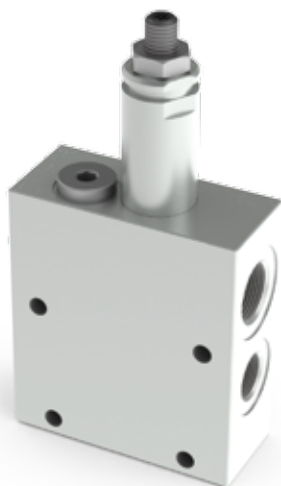


INLET MODULE UNITS WITH SIDE PORTS AND PRESSURE RELIEF VALVE

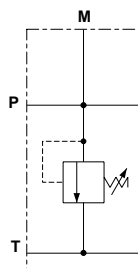


Inlet module units FE10S with side ports and CMP10 adjustable pressure relief valve.

- Manual adjustment with a grub screw or plastic knob.
- Threaded ports P-T, G3/8" or G3/8"(P) - G1/2"(T).
- Maximum flow 40 l/min.
- Aluminum body.

1

HYDRAULIC SYMBOL



FEATURES

Max. operating pressure	250 bar
Max. Flow	40 l/min
Hydraulic fluid	DIN 51524 Mineral oils
Fluid viscosity	10 ÷ 500 mm ² /s
Fluid temperature	-25°C ÷ 75°C
Ambient temperature	-25°C ÷ 60°C
Max. contamination level (filter β ₂₅ ≥ 75)	ISO 4406:1999: class 21/19/16 NAS 1638: class 10
Weight	0.6 kg

Pressure relief valve (CMP10...)

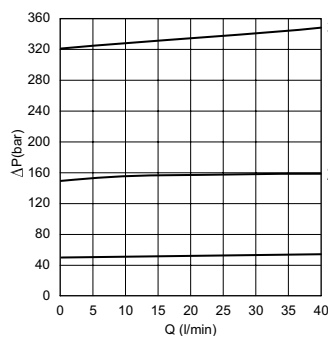
Setting range (*):	
Spring 1	max 50 bar
Spring 2	max 150 bar
Spring 3	max 320 bar

(*) The minimum permissible setting pressure depending on the spring: see curves.

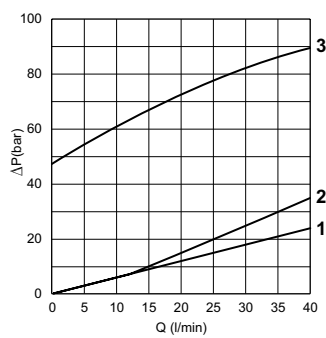
ORDERING CODE

- FE10S** Inlet module unit with side ports and pressure relief valve (up to 40 l/min)
- 3** Size
- *** Ports:
1 = G3/8" ports P,T
5 = G3/8" port P - G1/2" port T
- *** Adjustment:
M = Plastic knob
C = Grub screw
- *** Setting ranges
1 = max. 50 bar (white spring)
2 = max. 150 bar (yellow spring)
3 = max. 320 bar (** (green spring)
- **** **00** = No variant
V1 = Viton
- 1** Serial No.

PRESSURE-FLOW RATE



MIN.SETTING PRESSURE

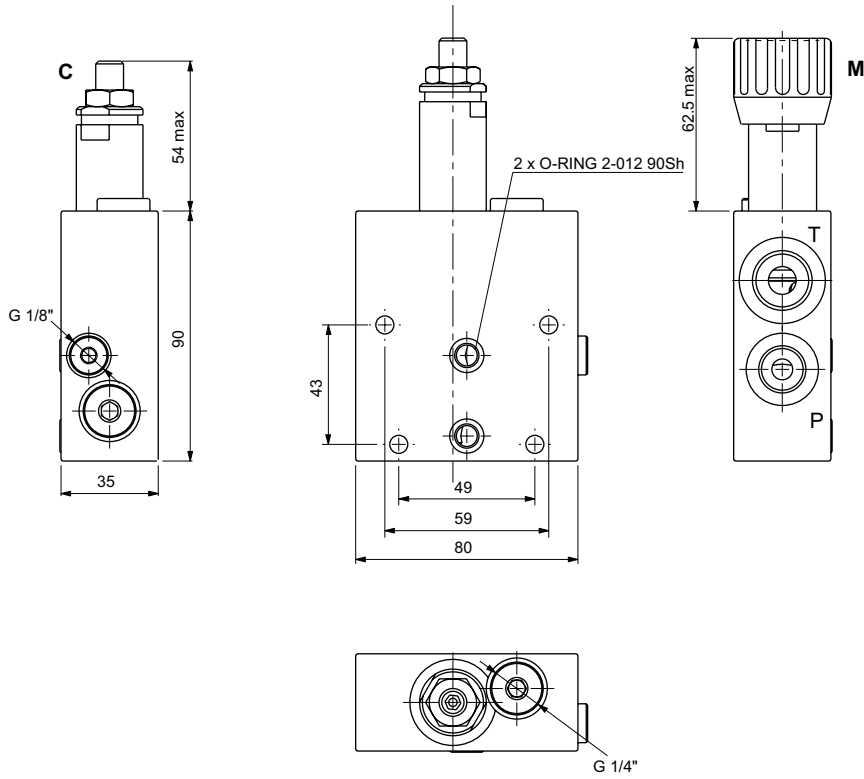


1 = max 50 bar - **2** = max 150 bar - **3** = max 320 bar
 Fluid used: mineral based oil with viscosity 46 mm²/s at 40°C.

(**) Setting referred to the maximum pressure reached from the relief valve. Do not exceed the maximum working pressure 250 bar.

OVERALL DIMENSIONS

1



C = Grub screw
M = Plastic knob