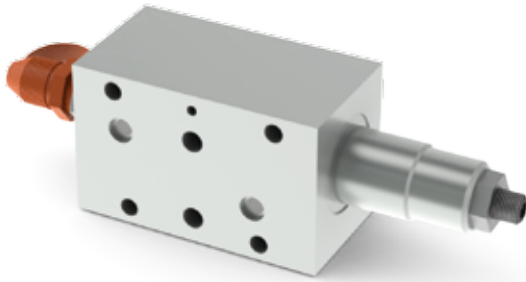
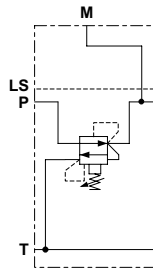


INTERMEDIATE ELEMENT WITH PRESSURE REDUCING VALVE



HYDRAULIC SYMBOL



ORDERING CODE

- FI** Intermediate element
- 3** Size
- RP** Pressure reducing valve
- *** Adjustment:
M = Plastic knob
C = Grub screw
- *** Setting ranges
1 = max. 60 bar (white spring)
2 = max. 120 bar (yellow spring)
3 = max. 250 bar (green spring)
- **** **00** = No variant
V1 = Viton
- 1** Serial No.

Intermediate element FI3RP provide a pilot-operated pressure reducing valve CVR20

- Test coupling
- Feed a secondary branch of a circuit at a lower pressure, guaranteeing minimum variation of the set pressure with flow alterations.
- Manual adjustment with a grub screw or plastic knob.
- Maximum flow 40 l/min.
- Aluminum body.

FEATURES

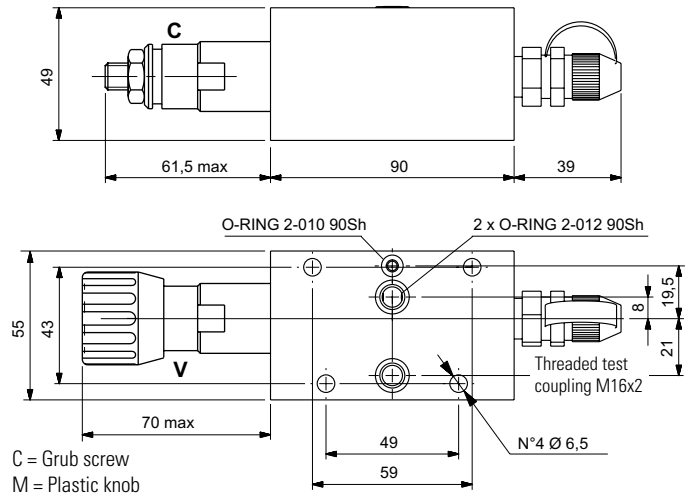
Max. operating pressure	250 bar
Max. Flow	40 l/min
Hydraulic fluid	DIN 51524 Mineral oils
Fluid viscosity	10 ÷ 500 mm ² /s
Fluid temperature	-25°C ÷ 75°C
Ambient temperature	-25°C ÷ 60°C
Max. contamination level (filter β ₂₅ ≥ 75)	ISO 4406:1999: class 21/19/16 NAS 1638: class 10
Weight	0.7 kg

Pressure reducing valve (CVR20...)

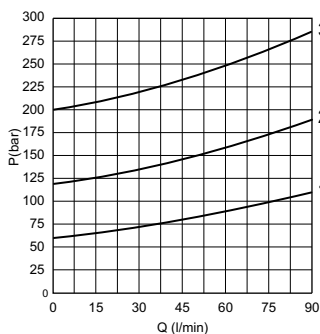
Setting range (*):	
Spring 1	max 60 bar
Spring 2	max 120 bar
Spring 3	max 250 bar

(*) The minimum permissible setting pressure depending on the spring: see curves.

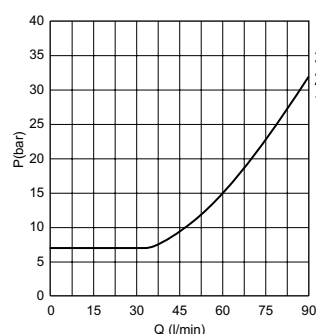
OVERALL DIMENSIONS



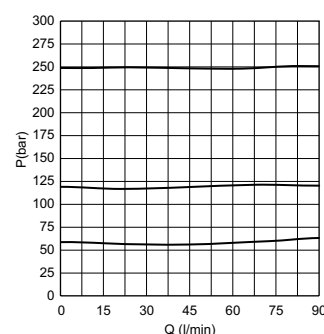
PRESSURE-FLOW OF RELIEVING



MIN.SETTING PRESSURE



PRESSURE-FLOW RATE



- 1** = max 60 bar
- 2** = max 120 bar
- 3** = max 250 bar

Fluid used: mineral based oil with viscosity 46 mm²/s at 40°C.