

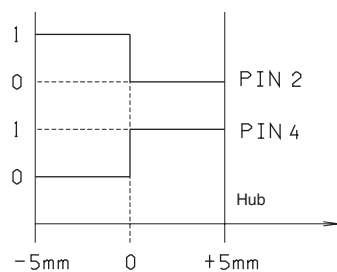
PROXIMITY SENSOR TYPE LVDT

Supply voltage	20..32 VDC
Polarity reversal protection	yes
Switching point hysteresis	≤ 0,05 mm
Reproducibility	± 0,02 mm
Max. output current	≤ 400 mA; duty ratio 100%
Protection against short circuit	yes
Operating temperature	-25°C ÷ 80°C
Connection type	connector
Protection according to DIN	IP65
Max. pressure	400 bar

CE certificate according to 89/336/EEC EMC is provided. A screened cable is needed.

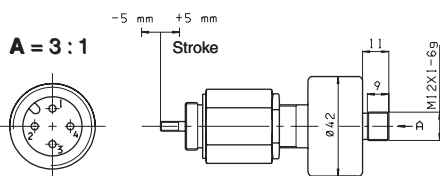
The LVDT position transducers allow to check exactly the very instant when the passage of a minimum flow is allowed.

FUNCTIONAL DIAGRAM ON PIN 2 AND 4

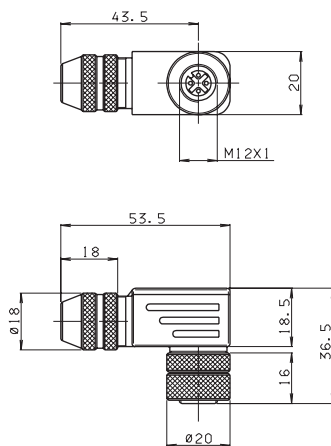


0 = Voltage Pin 2 and Pin 4 < 1,8 V
1 = Voltage Pin 2 and Pin 4 20..32 VDC

OVERALL DIMENSION LVDT



OVERALL DIMENSIONS CONNECTOR



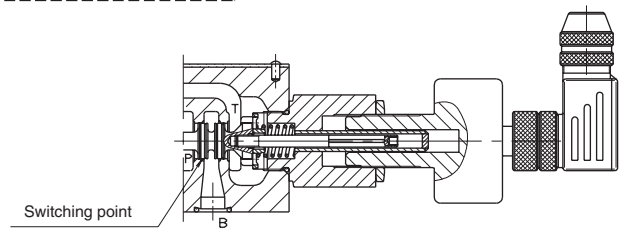
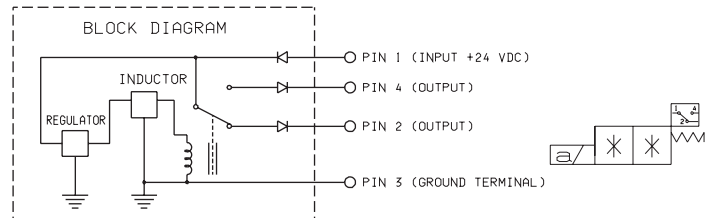
Type of protection IP67
Ambient temperature -40°C ÷ 85°C

Ordering code: V86400003

ELECTRICAL CONNECTIONS LVDT

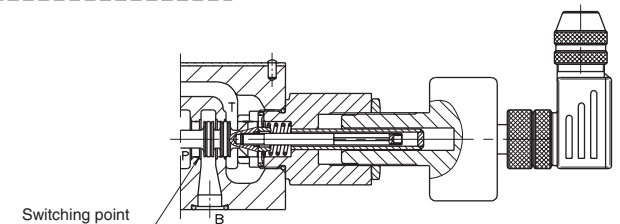
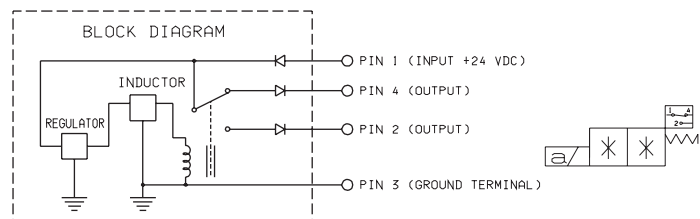
A

With this connection, on the Pin 4 an output signal is active when no oil is crossing the valve (from P → B).



B

With this connection, on the Pin 4 there is no output signal when oil is crossing the valve (from P → B).



NB: connecting the output to Pin 4 or Pin 2 the type of contact, normally closed or open, can be chosen.