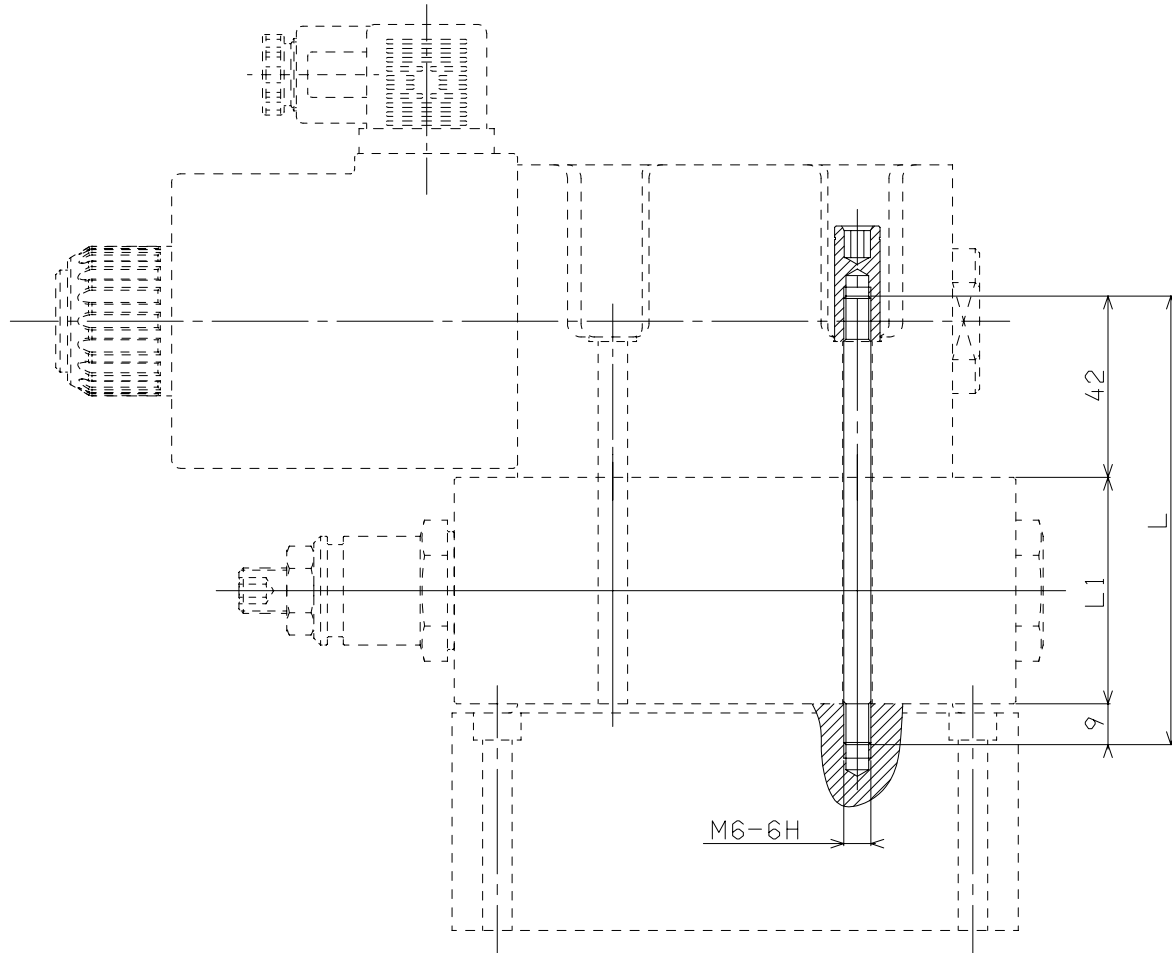


# TABLE OF SCREW AND STUDS FOR MOUNTING CETOP 5/NG10

## OVERALL DIMENSIONS

Tighten M27050002 to a torque of **8 Nm / 0.8 Kgm max.**



SCREWS T.C.E.I CODE	L mm	L1* mm	COMPOSITION	Q.TY	SPECIAL NUTS CODE
Q26074090	40	—	AD5...	4	—
Q26074098	90	50	AD5... + 1 AM5... (ISO)	4	
Q26074301	100	60	AD5... + AM5VR	4	
Q26074302	110	70	AD5... + AM5VI	4	
Q26074099	120	80	AD5... + A88	4	
M80150004	150	100	AD5... + 2 AM5... (ISO)	4	V89250000 (No. 20 nuts kit)
M80150012	160	110	AD5... + AM5VR + AM5... (ISO)	4	
M80150010	180	130	AD5... + A88... + AM5... (ISO)	4	
M80150006	190	140	AD5... + A88... + AM5VR	4	
M80150011	200	150	AD5... + 3 AM5... (ISO)	4	

\* Indicative overall dimensions valves composition