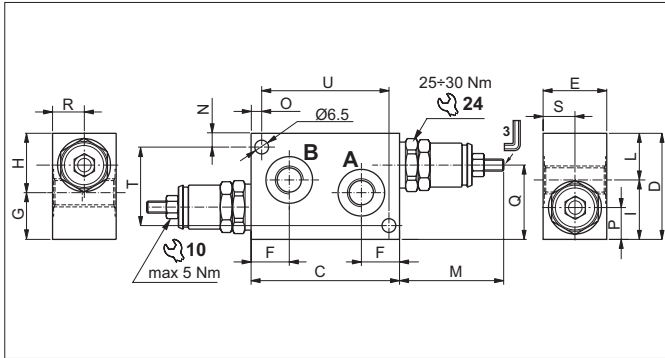


DOUBLE CROSS RELIEF VALVES DIRECT ACTING - IN-LINE MOUNTING

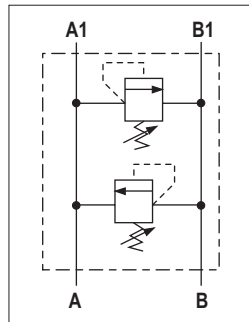
3



The direct acting compensator valves with CMP04 series 2 type cartridge protects the hydraulic components from impact or peaks in pressure. It raises the safety level by making it impossible for the plant operators to set a higher pressure rating, than that specified in the catalogue. It has a pack spring with a mechanical stop. The body is in high-resistance aluminium and the cartridge is in galvanised steel.

Size	Ports A-B	Valve features see:	C (mm)	D (mm)	E (mm)	F (mm)	G (mm)	H (mm)	I (mm)	L (mm)	M (mm)	N (mm)	O (mm)	P (mm)	Q (mm)	R (mm)	S (mm)	T (mm)	U (mm)	Weight (kg)
06	3/8 BSP	CMP04	70	50	30	18	20	30	30	20	49.8	6.5	5	15	35	15	15	37	60	0.400

HYDRAULIC SYMBOL



HYDRAULIC FEATURES

Max. pressure	250 bar
Max. Flow	30 l/min
Hydraulic fluid	DIN 51524 Mineral oils
Fluid viscosity	10 ÷ 500 mm ² /s
Fluid temperature	-25°C ÷ 75°C
Ambient temperature	-25°C ÷ 60°C
Max. contamin. level class with filter	ISO 4406:1999 - class 19/17/14

ORDERING CODE

