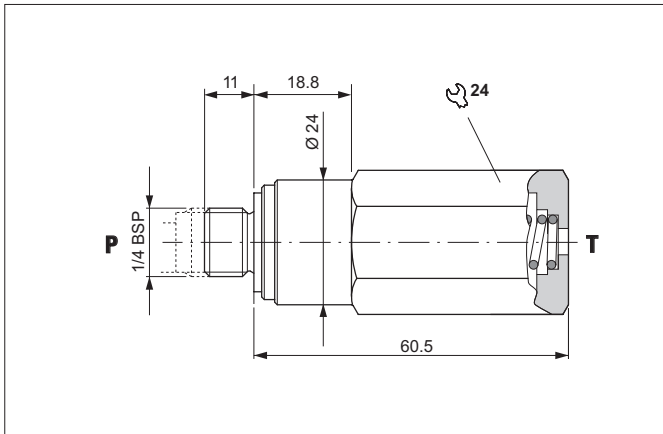
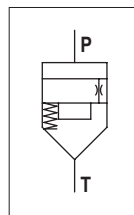


## SINGLE-PHASE MOTOR START VALVE - IN-LINE MOUNTING



Valve used on power units to delay system pressurisation to allow a single-phase motor to reach the required speed.  
 Fitted directly on the auxiliary pressure delivery line of unit 1 pumps or on the delivery branch between pump and unidirectional valve.  
 The body is in steel and the tapered poppet in tempered and ground steel.

### HYDRAULIC SYMBOL



### HYDRAULIC FEATURES

|  |                                |
|--|--------------------------------|
| Max. working pressure                          | 300 bar                        |
| Max. Flow                                      | 20 l/min                       |
| Min. working pressure                          | 15 bar                         |
| Max operating frequency (with manual operated) | 1 Hz                           |
| Working Temperature                            | -25°C ÷ 60°C                   |
| Hydraulic fluid                                | DIN 51524 Mineral oils         |
| Fluid viscosity                                | 10 ÷ 500 mm <sup>2</sup> /s    |
| Fluid temperature                              | -25°C ÷ 75°C                   |
| Max. contamin. level class with filter         | ISO 4406:1999 - class 19/17/14 |
| Weight   | 0.14 kg                        |
| Tightening torque                              | 25 ÷ 30 Nm                     |

11

### ORDERING CODE

