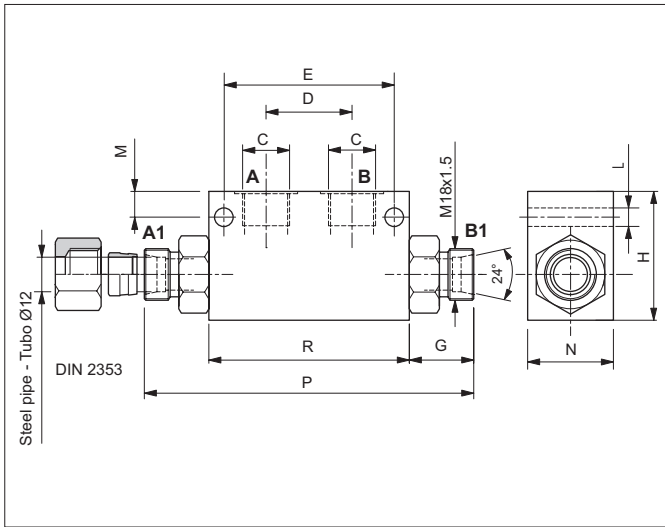


## SINGLE AND DOUBLE ACTING PILOT CHECK VALVES-DIN 2353 PORTS - IN-LINE MOUNTING



With the acting pilot check valves, a single or double acting actuator can be locked in any position.

Sealing is guaranteed by tempered, ground, tapered steel poppets, releasing is by venting the piloted openings "A" and "B" according to the valve pilot ratio. The valves can be mounted in any position and are protected externally by a zinc plating.

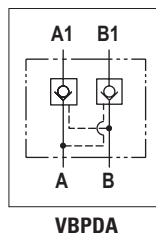
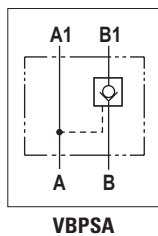
### HYDRAULIC FEATURES

Max. Leakage (0 ÷ 5 drops/min)	0 ÷ 0.25 cm <sup>3</sup> /min
Hydraulic fluid	DIN 51524 Mineral oils
Fluid viscosity	10 ÷ 500 mm <sup>2</sup> /s
Fluid temperature	-25°C ÷ 75°C
Ambient temperature	-25°C ÷ 60°C
Max. contamin. level class with filter	ISO 4406:1999 - class 19/17/14

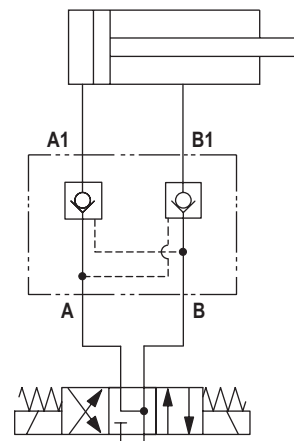
5

Code	C	Flow max (l/min)	Pressure max (bar)	D (mm)	E (mm)	G (mm)	H (mm)	L (mm)	M (mm)	N (mm)	P (mm)	R (mm)	Weight (kg)	Pilot ratio
VBPSA0412	1/4 BSP	20	350	30	60	22.5	45	6.5	9	30	115	70	0.83	1:4
VBPSA0612	3/8 BSP	25	350	30	60	22.5	45	6.5	9	30	115	70	0.75	1:4
VBPDA0412	1/4 BSP	20	350	30	60	22.5	45	6.5	9	30	115	70	0.83	1:4
VBPDA0612	3/8 BSP	25	350	30	60	22.5	45	6.5	9	30	115	70	0.75	1:4

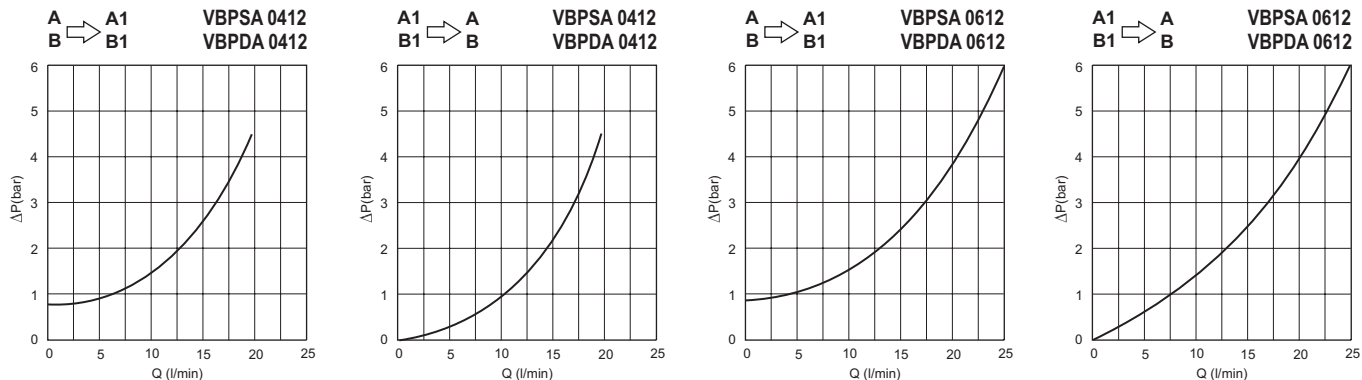
### HYDRAULIC SYMBOLS



### SERVICE EXAMPLE

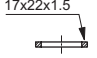
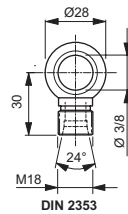
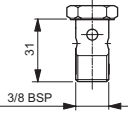
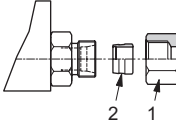
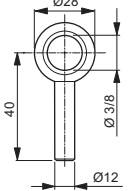
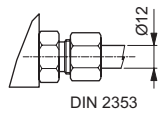


## PRESSURE DROPS



Fluid used: mineral based oil with viscosity 15 mm<sup>2</sup>/s at 40°C.

## ACCESSORIES AND SPARE PARTS

	<b>Q51435044</b>	Copper Washer		<b>OD050612L</b>	DIN Banjo
	<b>RF05060000</b>	Hollow screw		1: <b>E341L12</b> 2: <b>E342L12</b>	Nut (spare) Cutting ring (spare)
	<b>OT0506T12</b>	Banjo		Assembly example with steel pipe Ø 12 mm DIN 2353	

## ORDERING CODE

