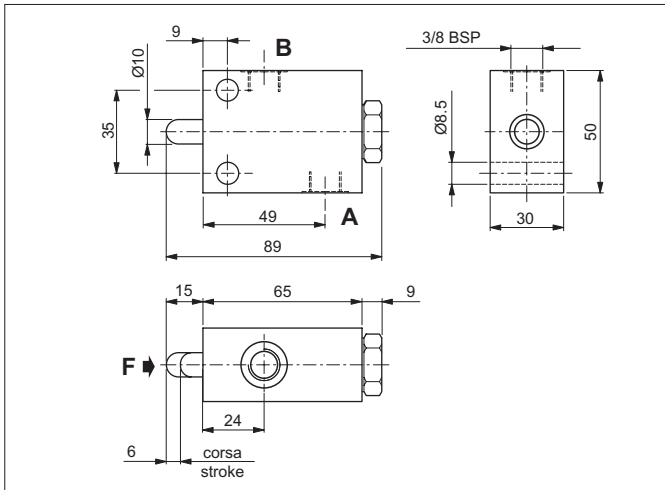


END-OFF STROKE VALVES - IN-LINE MOUNTING



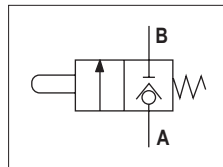
The direct acting normally closed 2-way 2-position directional valve with manual control is fitted on a branch to release the pressure; a pusher enables the fluid to pass through the valve from A to B. Tapered poppet is in tempered and ground steel. The valve body is in galvanised steel.

HYDRAULIC FEATURES

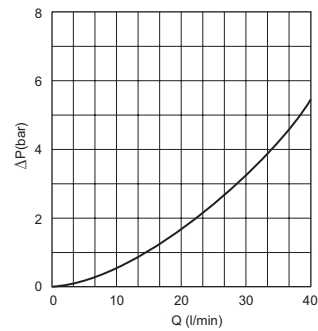
Max. working pressure	300 bar
Max. Flow	40 l/min
Max. Leakage (0 ÷ 5 drops/min)	0 ÷ 0.25 cm ³ /min
Max. mechanical push force (F) required at 300 bar	240 daN
Hydraulic fluid	DIN 51524 Mineral oils
Fluid viscosity	10 ÷ 500 mm ² /s
Fluid temperature	-25°C ÷ 75°C
Ambient temperature	-25°C ÷ 60°C
Max. contamin. level class with filter	ISO 4406:1999 - class 19/17/14
Weight	0.68 kg

7

HYDRAULIC SYMBOL



PRESSURE DROPS



Fluid used: mineral based oil with viscosity 15 mm²/s at 40°C.

ORDERING CODE

