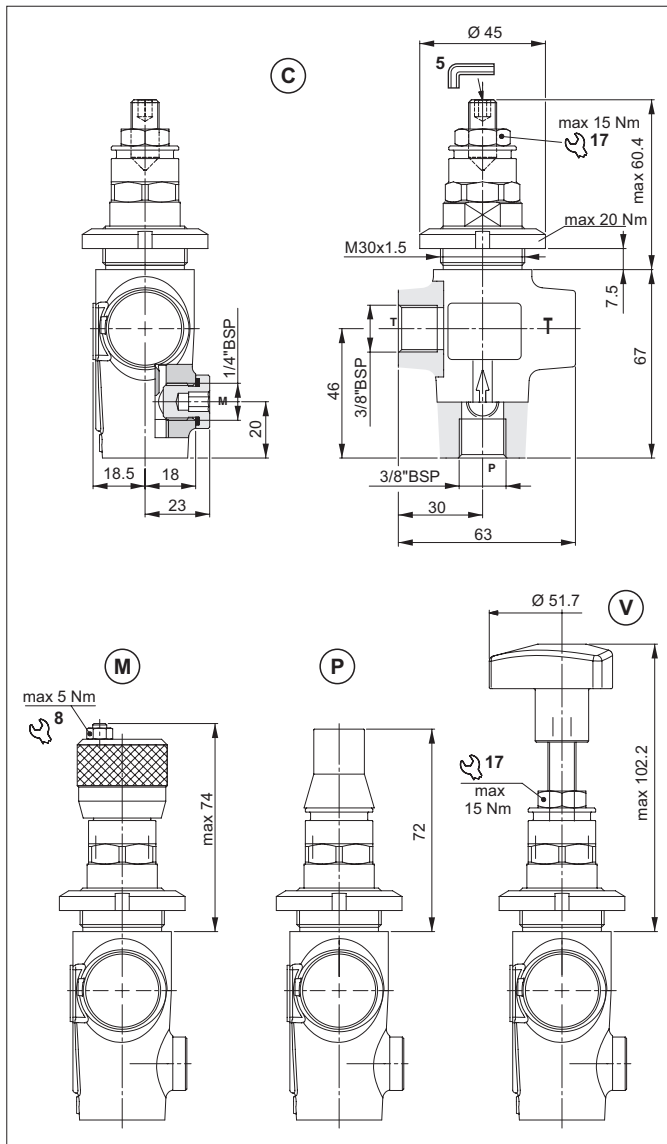


DIRECT ACTING PRESSURE RELIEF VALVES - IN-LINE MOUNTING

1



The direct acting relief valve with CP06 cartridge limits the pressure in the hydraulic circuit.

It raises the safety level by making it impossible for the plant operators to set a higher pressure rating, than that specified in the catalogue. This is limited by a pack spring with a mechanical stop.

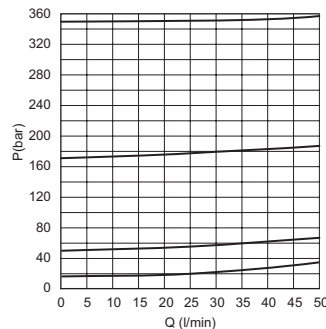
It has a manganese phosphate coated cast iron body. The cartridge is in galvanized steel.

HYDRAULIC FEATURES

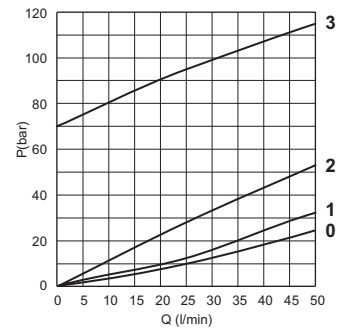
| | |
|--|--------------------------------|
| Max. working pressure | 350 bar |
| Setting range: | |
| Spring 1 (orange) | max 15 bar |
| Spring 1 (white) | max 50 bar |
| Spring 2 (yellow) | max 170 bar |
| Spring 3 (neutral) | 70 ÷ 350 bar |
| Max. Flow | 50 l/min |
| Hydraulic fluid | DIN 51524 Mineral oils |
| Fluid viscosity | 10 ÷ 500 mm ² /s |
| Fluid temperature | -25°C ÷ 75°C |
| Ambient temperature | -25°C ÷ 60°C |
| Max. contamin. level class with filter | ISO 4406:1999 - class 19/17/14 |
| Weight | 0.8 kg |

The minimum permissible setting pressure depending on the spring: see curves below

PRESSURE-FLOW RATE

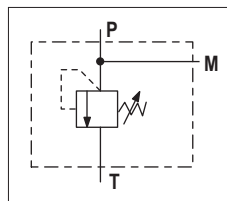


MIN. SETTING PRESSURE



0 = VMP06.0.. - 1 = VMP06.1.. - 2 = VMP06.2.. - 3 = VMP06.3..
Fluid used: mineral based oil with viscosity 46 mm²/s at 40°C.

HYDRAULIC SYMBOL

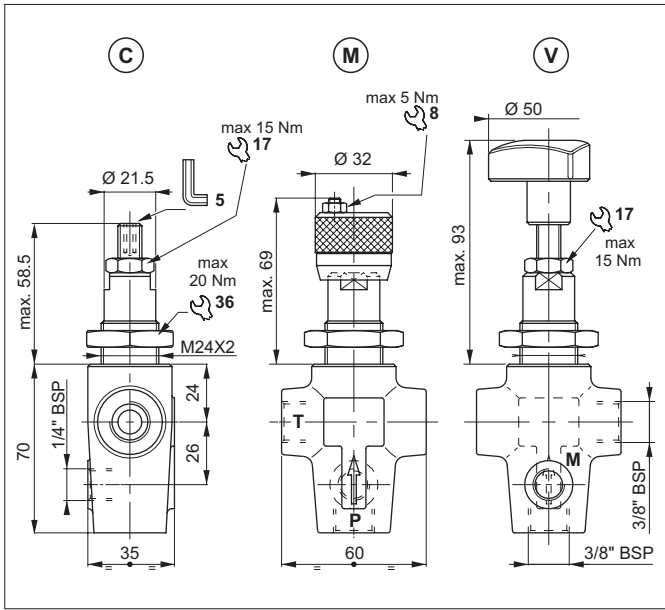


ORDERING CODE

| | | | | | |
|------------------------------------|--------------------------------------|--|---|--|-----------------------|
| VMP | 06 | * | * | ** | 1 |
| Series | Size | Adjustment | Setting ranges | Variants | Serial No. |
| VMP = Pressure relief valve | 06 = Connector size: 3/8" BSP | C = Screw M = Plastic knob P = C + Sealed cap V = Handwheel | 0 = Max 15 bar (orange spring) 1 = Max 50 bar (white spring) 2 = Max 170 bar (yellow spring) 3 = 70÷350 bar (neutral spring) | 00 = No variants V1 = Viton | 1 = Serial No. |

DIRECT ACTING PRESSURE RELIEF VALVES - IN-LINE MOUNTING

1



The direct acting relief valve with CMP10 cartridge limits the pressure in the hydraulic circuit.

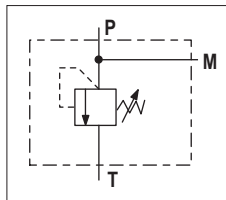
It raises the safety level by making it impossible for the plant operators to set a higher pressure rating, than that specified in the catalogue. This is limited by a pack spring with a mechanical stop, which prevents temporary P closures caused by pressure peaks.

It has a manganese phosphate coated cast iron body. The cartridge is in galvanized steel.

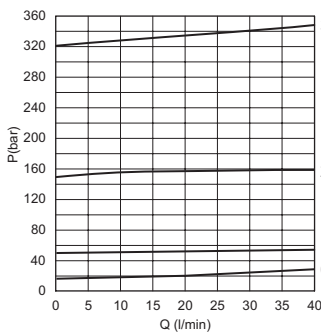
HYDRAULIC FEATURES

| | |
|--|--------------------------------|
| Max. working pressure | 320 bar |
| Setting range: | |
| Spring 1 (orange) | max 15 bar |
| Spring 1 (white) | max 50 bar |
| Spring 2 (yellow) | max 150 bar |
| Spring 3 (green) | max 320 bar |
| Max. Flow | 40 l/min |
| Hydraulic fluid | DIN 51524 Mineral oils |
| Fluid viscosity | 10 ÷ 500 mm ² /s |
| Fluid temperature | -25°C ÷ 75°C |
| Ambient temperature | -25°C ÷ 60°C |
| Max. contamin. level class with filter | ISO 4406:1999 - class 19/17/14 |
| Weight | 0.8 kg |

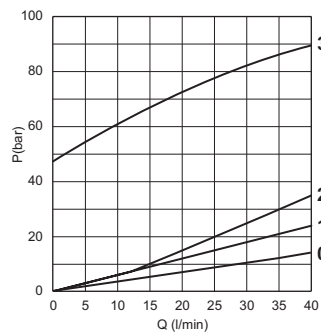
HYDRAULIC SYMBOL



PRESSURE-FLOW RATE



MIN.SETTING PRESSURE

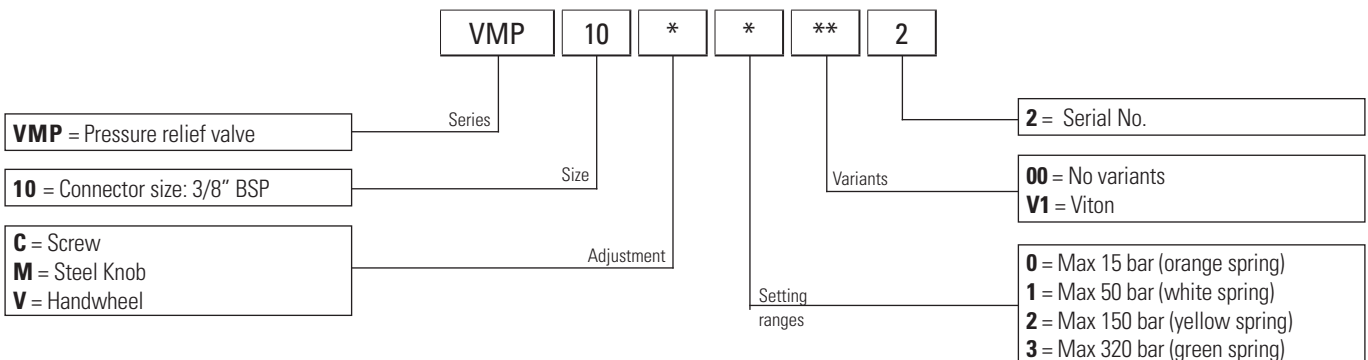


0 = VMP10.0.. - 1 = VMP10.1.. - 2 = VMP10.2.. - 3 = VMP10.3..

Fluid used: mineral based oil with viscosity 46 mm²/s at 40°C.

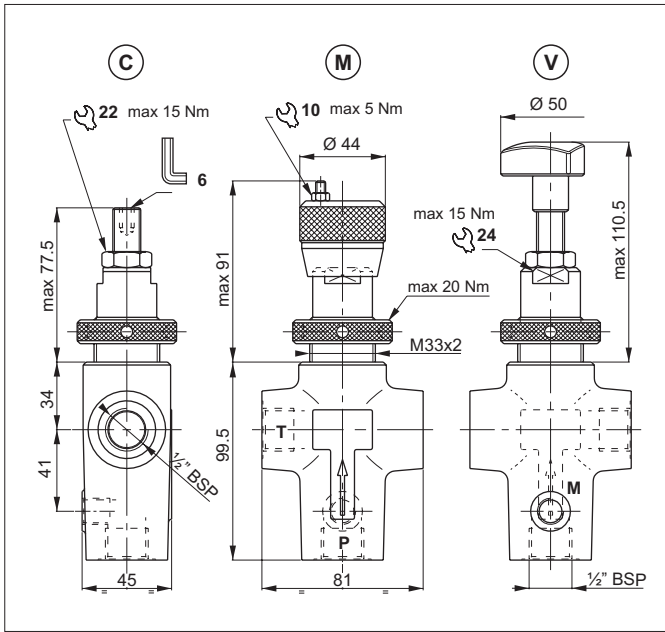
The minimum permissible setting pressure depending on the spring: see curves.

ORDERING CODE



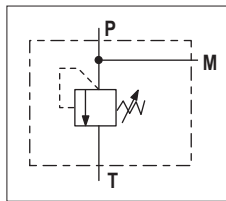
DIRECT ACTING PRESSURE RELIEF VALVES - IN-LINE MOUNTING

1

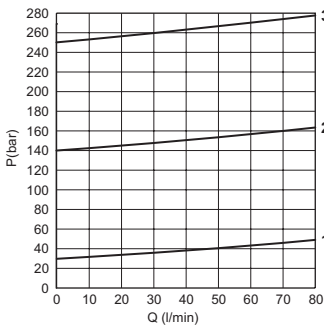


The direct acting relief valve with CMP20 cartridge limits the pressure in the hydraulic circuit to the calibration field specified in the catalogue. It has a manganese phosphate coated cast iron body. The cartridge is in galvanized steel.

HYDRAULIC SYMBOL



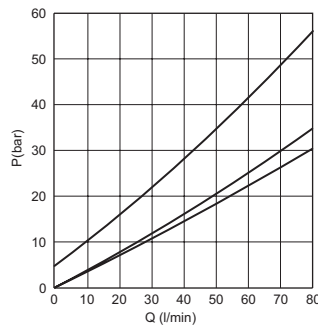
PRESSURE-FLOW RATE



1 = VMP20.1.. - 2 = VMP20.2.. - 3 = VMP20.3..

Fluid used: mineral based oil with viscosity 46 mm²/s at 40°C.

MIN.SETTING PRESSURE

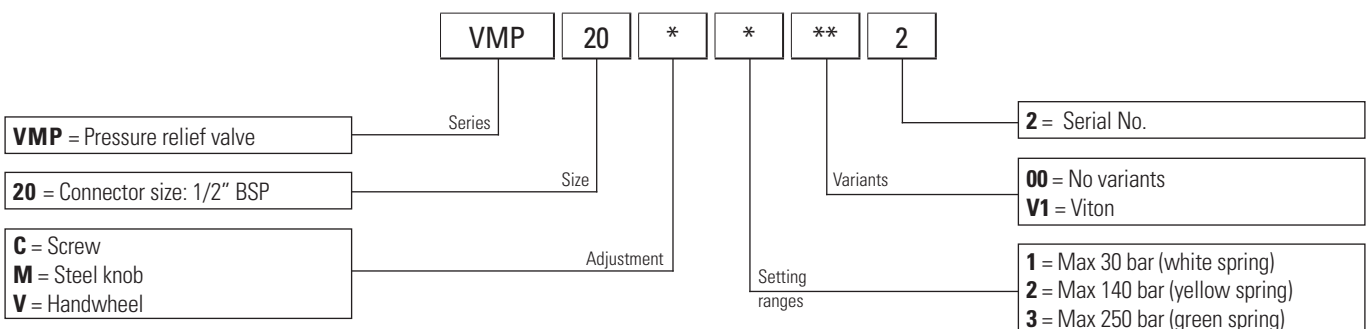


HYDRAULIC FEATURES

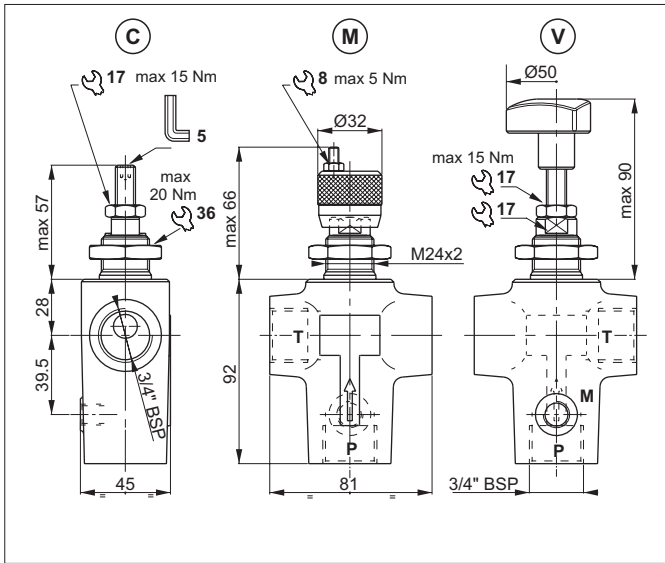
| | |
|--|--------------------------------|
| Max. working pressure | 250 bar |
| Setting range: | |
| Spring 1 (white) | max 30 bar |
| Spring 2 (yellow) | max 140 bar |
| Spring 3 (green) | max 250 bar |
| Max. Flow | 80 l/min |
| Hydraulic fluid | DIN 51524 Mineral oils |
| Fluid viscosity | 10 ÷ 500 mm ² /s |
| Fluid temperature | -25°C ÷ 75°C |
| Ambient temperature | -25°C ÷ 60°C |
| Max. contamin. level class with filter | ISO 4406:1999 - class 19/17/14 |
| Weight | 1.7 kg |

The minimum permissible setting pressure depending on the spring: see curves.

ORDERING CODE



PILOT OPERATED PRESSURE RELIEF VALVES - IN-LINE MOUNTING



The direct acting relief valve with CMP30 cartridge limits the pressure in the hydraulic circuit.

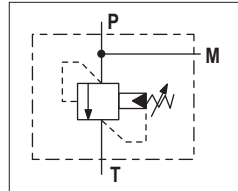
Slight leakage is tolerated for this type of valve.

It raises the safety level by making it impossible for the plant operators to set a higher pressure rating, than that specified in the catalogue. It has a pack spring with a mechanical stop.

It has a manganese phosphate coated cast iron body. The cartridge is in galvanized steel.

1

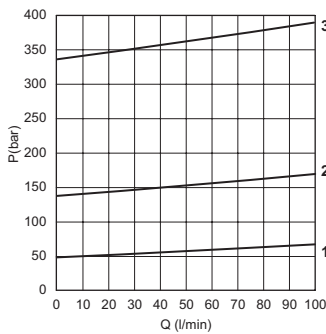
HYDRAULIC SYMBOL



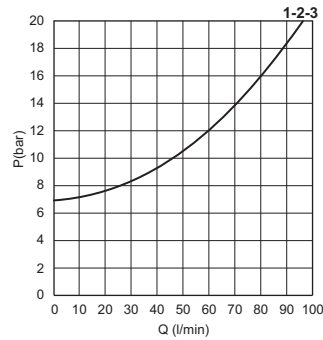
HYDRAULIC FEATURES

| | |
|--|--------------------------------|
| Max. working pressure | 350 bar |
| Setting range: | |
| Spring 1 (white) | max 50 bar |
| Spring 2 (yellow) | max 140 bar |
| Spring 3 (green) | max 350 bar |
| Max. Flow | 100 l/min |
| Hydraulic fluid | DIN 51524 Mineral oils |
| Fluid viscosity | 10 ÷ 500 mm ² /s |
| Fluid temperature | -25°C ÷ 75°C |
| Ambient temperature | -25°C ÷ 60°C |
| Max. contamin. level class with filter | ISO 4406:1999 - class 19/17/14 |
| Weight | 1.4 kg |

PRESSURE-FLOW RATE



MIN.SETTING PRESSURE

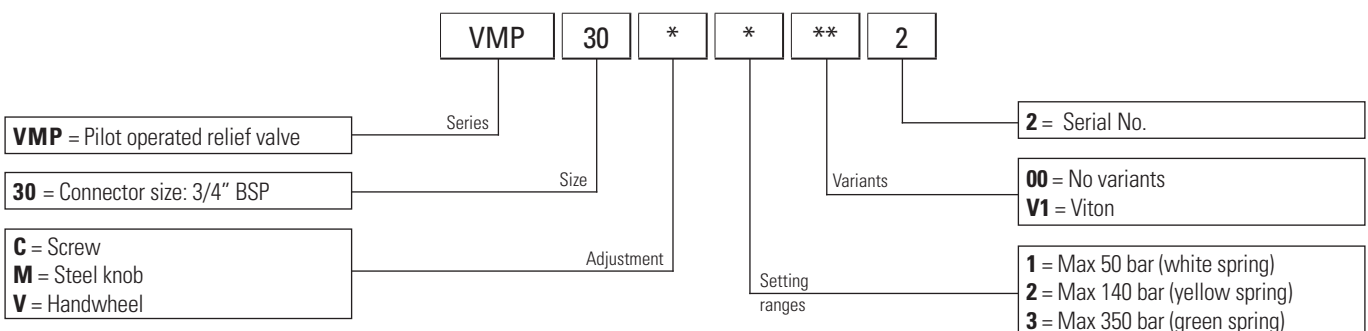


1 = VMP30.1.. - 2 = VMP30.2.. - 3 = VMP30.3..

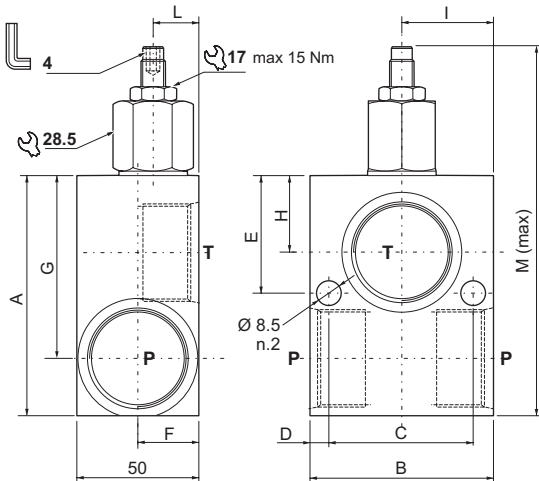
Fluid used: mineral based oil with viscosity 46 mm²/s at 40°C.

The minimum permissible setting pressure depending on the spring: see curves.

ORDERING CODE



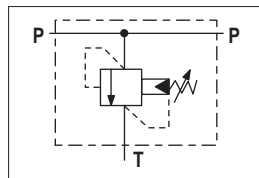
PILOT OPERATED PRESSURE RELIEF VALVES - IN-LINE MOUNTING



The pilot-operated relief valve limits the pressure in the hydraulic circuit. Slight leakage is tolerated for this type of valve. It raises the safety level by making it impossible for the plant operators to set a higher pressure rating, than that specified in the catalogue. It has a pack spring with a mechanical stop. It has a high-resistance aluminium body. The cartridge is in galvanised steel.

| CODE | P - T Attacchi/Ports | A | B | C | D | E | F | G | H | I | L | M |
|----------|----------------------|-----|----|----|-----|------|----|------|----|----|----|-------|
| VMP12012 | 3/4" BSP | 92 | 50 | 37 | 6 | 12.5 | 31 | 71.5 | 35 | 25 | 31 | 145.4 |
| VMP12016 | 1" BSP | 100 | 77 | 60 | 8.5 | 49 | 25 | 76 | 32 | 38 | 17 | 154 |

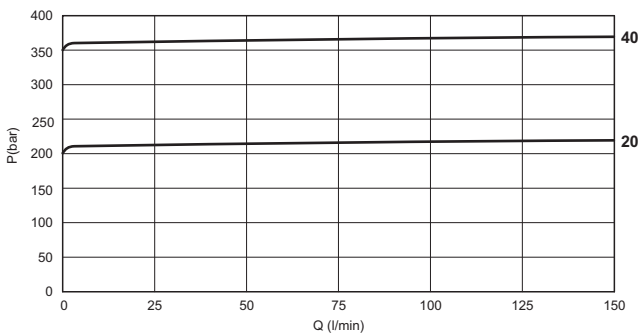
HYDRAULIC SYMBOL



HYDRAULIC FEATURES

| | |
|--|--------------------------------------|
| Max. working pressure | 350 bar |
| Max. Flow | 150 l/min |
| Hydraulic fluid | DIN 51524 Mineral oils |
| Fluid viscosity | 10 ÷ 500 mm ² /s |
| Fluid temperature | -25°C ÷ 75°C |
| Ambient temperature | -25°C ÷ 60°C |
| Max. contamin. level class with filter | ISO 4406:1999 - class 19/17/14 |
| Weight | 0.65 kg (3/4 BSP) 0.91 kg (1 BSP) |
| Cavity | (1" - 14 UNS) - Ø 19.05 mm |

PRESSURE-FLOW RATE



Fluid used: mineral based oil with viscosity 24 mm²/s at 50°C.

ORDERING CODE

